

## PRODUCT INFORMATION

<b>Common Name</b>	<b>Warning:</b> Undefined variable \$hasAttributeValueDescription in C:\wwwroot\mirror\dimabio.com\wp-content\plugins\woocommerce-print-products\publicclass\woocommerce-print-products-public.php on line 2806 ANTI-LY6E[DLYE-5953A][DLYE5953A][RG 7841]
<b>Conjugate</b>	Unconjugated
<b>Synonyms</b>	RIGE; SCA2; RIG-E; SCA-2; TSA-1
<b>Applications</b>	ELISA, Flow Cyt
<b>Recommended Dilutions</b>	ELISA 1:5000-10000, Flow Cyt 1:100
<b>Formulation &amp; Reconstitution</b>	Lyophilized from sterile PBS, pH 7.4. Normally 5 % - 8% trehalose is added as protectants before lyophilization. Please see Certificate of Analysis for specific instructions.
<b>Host Species</b>	Humanized
<b>IgG type</b>	Human IgG1 - kappa
<b>Reactivity</b>	Human
<b>Target</b>	LY6E
<b>Uniprot ID</b>	Q16553
<b>Description</b>	Anti-LY6E(RG7841 biosimilar) mAb
<b>Delivery</b>	In Stock
<b>Yefei Storage</b>	Store at -20°C to -80°C for 12 months in lyophilized form. After reconstitution, if not intended for use within a month, aliquot and store at -80°C (Avoid repeated freezing and thawing). Lyophilized antibodies are shipped at ambient temperature.
<b>Background</b>	Research grade biosimilar. Not for use in therapeutic or diagnostic procedures for humans or animals.
<b>Usage</b>	Research use only

## Anti-LY6E(RG7841 biosimilar) mAb ELISA

0.2 µg of Human LY6E, hFc tagged protein per well

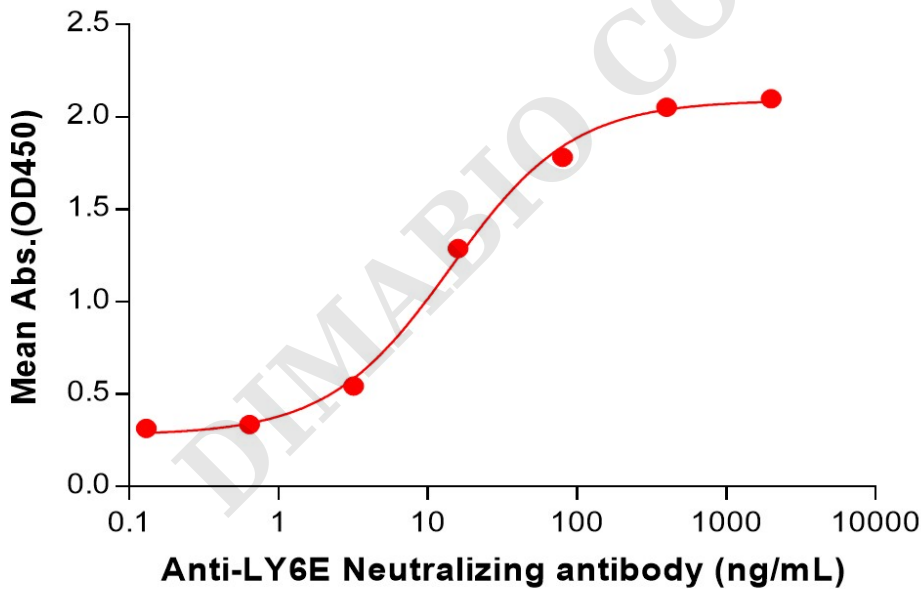


Figure 1. ELISA plate pre-coated by 2 µg/mL (100 µL/well) Human LY6E Protein, hFc Tag (PME101539) can bind Anti-LY6E(RG7841 biosimilar) mAb (BME100224) in a linear range of 3.20–80 ng/mL. In order to specifically detect BME100224, mouse anti-human Fab-specific antibody was used as detection antibody.



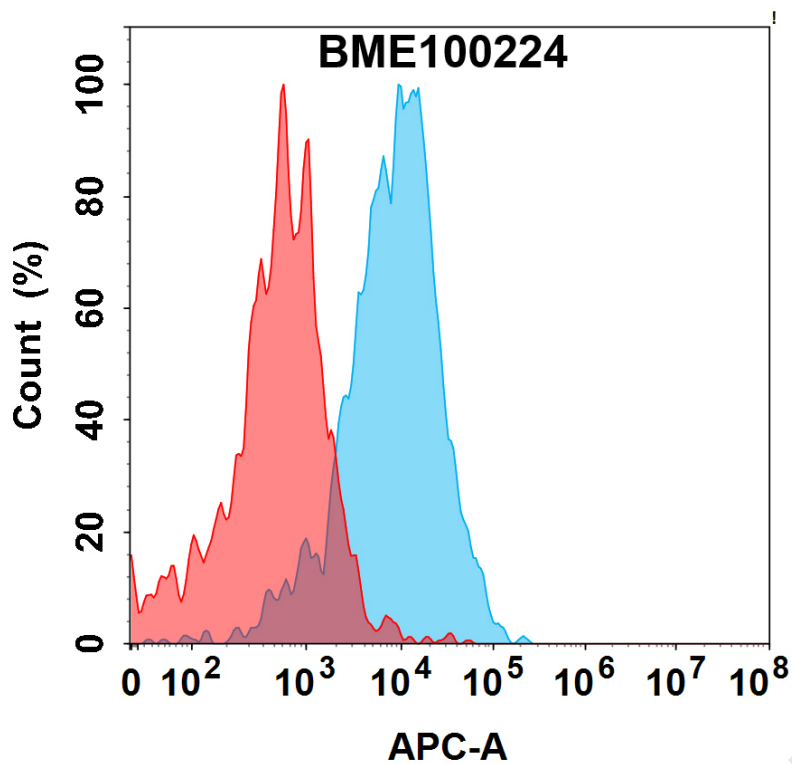


Figure 2. Flow cytometry analysis with 15µg/mL Anti-LY6E(RG7841 biosimilar) mAb (BME100224) on HEK293 cells transfected with Human LY6E protein (Blue histogram) or HEK293 transfected with irrelevant protein (Red histogram).

DIMABIO CONFIDENTIAL

