

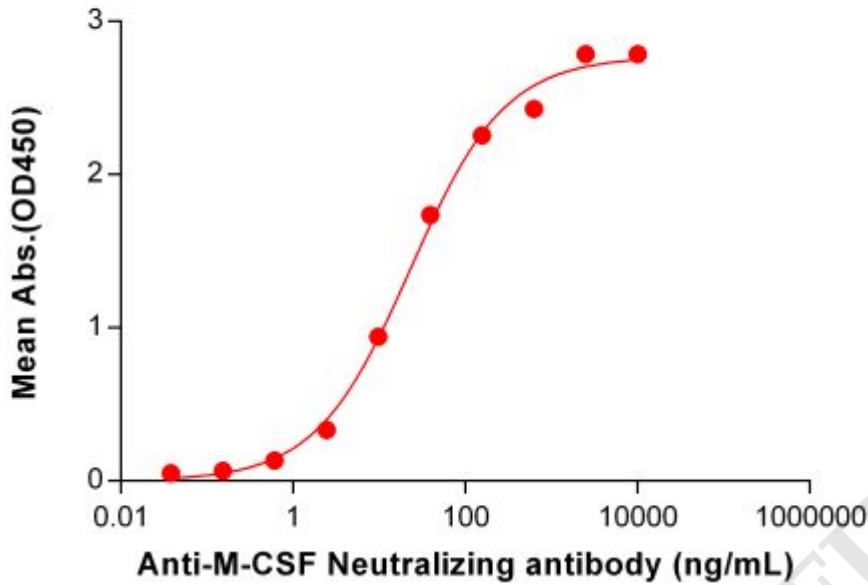
**PRODUCT INFORMATION**

<b>Common Name</b>	MCS-110, MCS110
<b>Synonyms</b>	CSF-1;MCSF
<b>Applications</b>	ELISA; Flow Cyt
<b>Recommended Dilutions</b>	ELISA 1:5000-10000; Flow Cyt 1:100
<b>Formulation &amp; Reconstitution</b>	Lyophilized from sterile PBS, pH 7.4. Normally 5% - 8% trehalose is added as protectants before lyophilization. Please see Certificate of Analysis for specific instructions of reconstitution.
<b>Host Species</b>	Humanized
<b>IgG type</b>	IgG1
<b>Reactivity</b>	Human
<b>Target</b>	M-CSF
<b>Uniprot ID</b>	P09603
<b>Description</b>	Anti-M-CSF(Iacnotuzumab biosimilar) mAb
<b>Delivery</b>	In Stock
<b>Storage &amp; Shipping</b>	Store at -20°C to -80°C for 12 months in lyophilized form. After reconstitution, if not intended for use within a month, aliquot and store at -80°C (Avoid repeated freezing and thawing). Lyophilized proteins are shipped at ambient temperature.
<b>Background</b>	Research grade biosimilar. Not for use in therapeutic or diagnostic procedures for humans or animals.
<b>Usage</b>	Research use only
<b>Conjugate</b>	Unconjugated
<b>DIMA Disclaimer</b>	All DIMA recombinant antibodies are genuinely generated by DIMA Biotech. They are all under patent application. Any protein sequencing or reverse engineering attempt is prohibited. We are actively scrutinizing all patent application to ensure no IP infringement.



### Anti-M-CSF (lacnotuzumab biosimilar) mAb ELISA

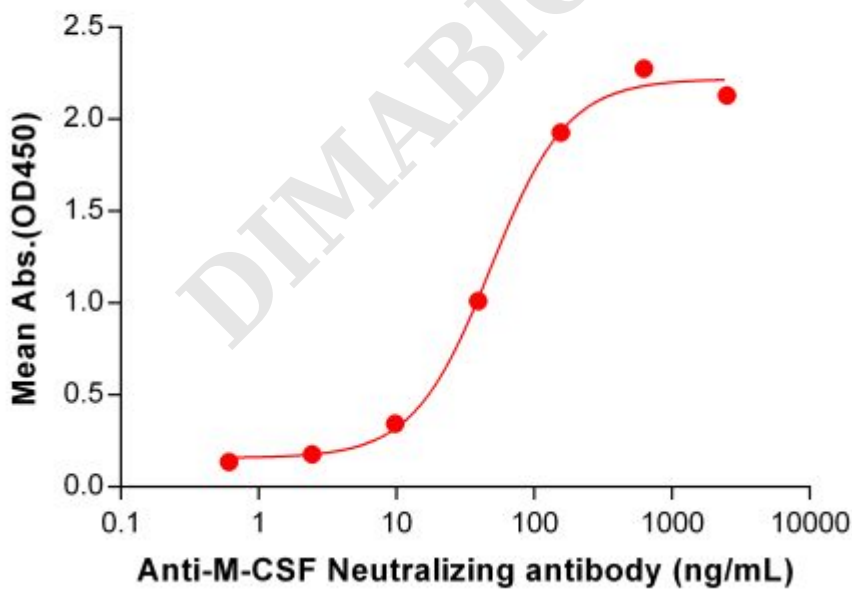
0.2  $\mu$ g of Human M-CSF, His tagged protein per well



**Figure 1.** ELISA plate pre-coated by 2  $\mu$ g/mL (100  $\mu$ L/well) Human M-CSF Protein, His Tag ([getskuurl sku="PME100569"]) can bind Anti-M-CSF Neutralizing antibody (**BME100104**) in a linear range of 2.44-156.25 ng/mL.

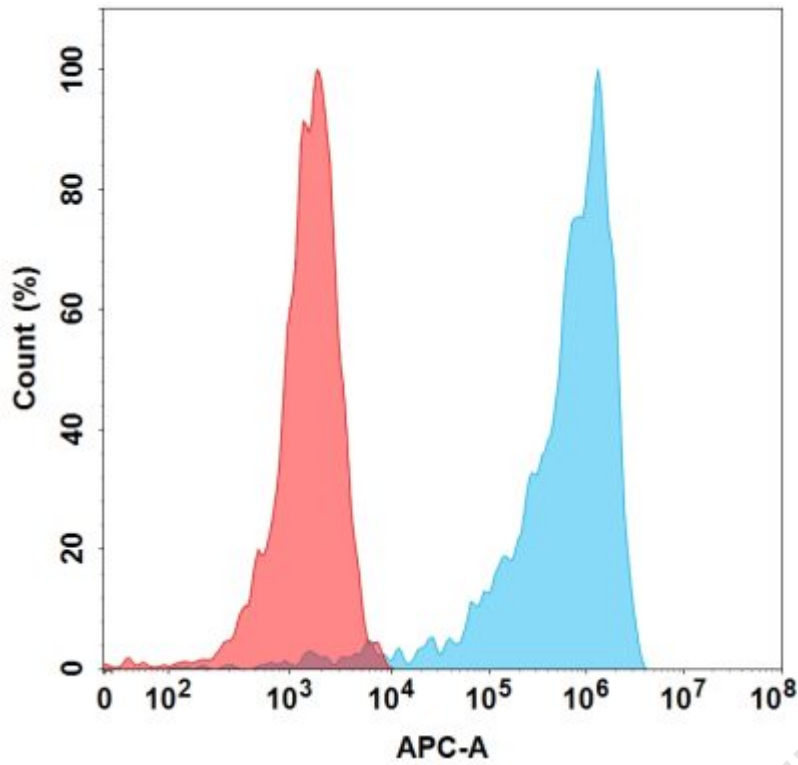
### Anti-M-CSF (lacnotuzumab biosimilar) mAb ELISA

0.2  $\mu$ g of Human M-CSF, hFc tagged protein per well



**Figure 2.** ELISA plate pre-coated by 2  $\mu$ g/mL (100  $\mu$ L/well) Human M-CSF Protein, hFc Tag (PME100550) can bind Anti-M-CSF Neutralizing antibody (**BME100104**) in a linear range of 9.77-156.25 ng/mL. In order to specifically detect BME100104, mouse anti-human Fab-specific antibody was used as detection antibody.





**Figure 3.** Flow cytometry analysis with 1 µg/mL Anti-M-CSF (lacnotuzumab biosimilar) mAb (BME100104) on Expi293 cells transfected with Human M-CSF protein (Blue histogram) or Expi293 transfected with irrelevant protein (Red histogram).

DIMABIO CONFIDENTIAL

