

PRODUCT INFORMATION

Common Name	Warning: Undefined variable \$hasAttributeValueDescription in C:\wwwroot\mirror\dimabio.com\wp-content\plugins\woocommerce-print-products\publicclass-woocommerce-print-products-public.php on line 2806 LB1902
Conjugate	Unconjugated
Synonyms	MSLN;MPF
Applications	ELISA; Flow Cyt
Recommended Dilutions	ELISA 1:5000-10000; Flow Cyt 1:100
Formulation & Reconstitution	Lyophilized from sterile PBS, pH 7.4. Normally 5 % - 8% trehalose is added as protectants before lyophilization. Please see Certificate of Analysis for specific instructions of reconstitution.
Host Species	Humanized
IgG type	Human IgG1 Fc
Reactivity	Human
Target	Mesothelin
Uniprot ID	Q13421
Description	Anti-Mesothelin VHH-human IgG1 Fc
Delivery	In Stock
Yefei Storage	Store at -20°C to -80°C for 12 months in lyophilized form. After reconstitution, if not intended for use within a month, aliquot and store at -80°C (Avoid repeated freezing and thawing). Lyophilized proteins are shipped at ambient temperature.
Background	Research grade biosimilar. Not for use in therapeutic or diagnostic procedures for humans or animals.
Usage	Research use only

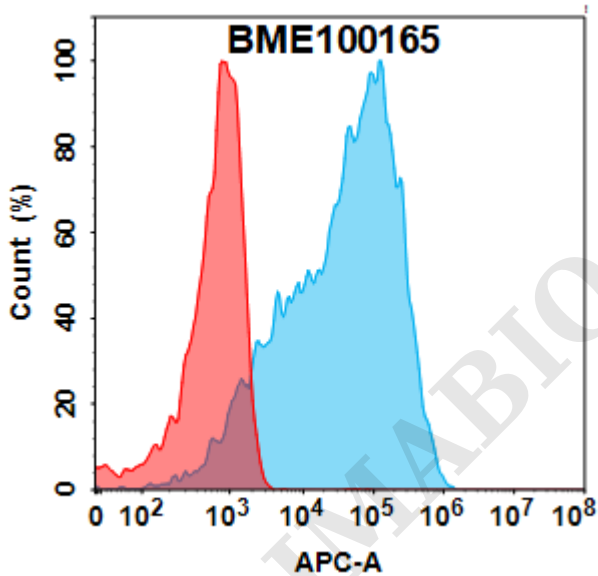


Figure 1. Flow cytometry analysis with 1µg/mL Anti-Mesothelin VHH-human IgG1 Fc (BME100165) on HEK293 cells transfected with Human Mesothelin protein (Blue histogram) or HEK293 transfected with irrelevant protein (Red histogram).



Anti-Mesothelin VHH-human IgG1 Fc ELISA

0.2 μ g of Human Mesothelin (296-580), mFc-His tagged protein per well

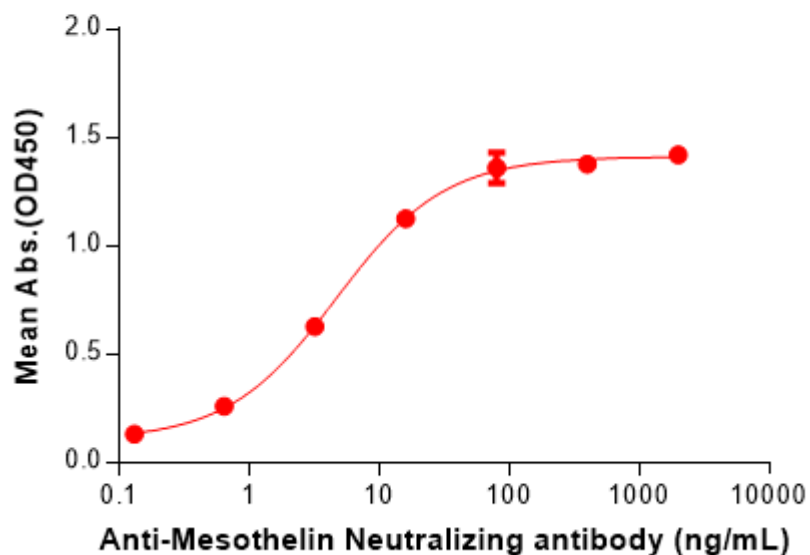


Figure 2. ELISA plate pre-coated by 2 μ g/mL (100 μ L/well) Human Mesothelin (296-580) Protein, mFc-His Tag (PME100031) can bind Anti-Mesothelin VHH-human IgG1 Fc (BME100165) in a linear range of 0.64–16 ng/mL.

DIMABIO CONFIDENTIAL

