

PRODUCT INFORMATION

Common Name	Warning: Undefined variable \$hasAttributeValueDescription in C:\wwwroot\mirror.dimabio.com\wp-content\plugins\woocommerce-print-products\publicclass-woocommerce-print-products-public.php on line 2806 IMC RON-8, IMC-RON8, RON8
Synonyms	Warning: Undefined variable \$hasAttributeValueDescription in C:\wwwroot\mirror.dimabio.com\wp-content\plugins\woocommerce-print-products\publicclass-woocommerce-print-products-public.php on line 2806 CD136;CDw136;NPCA3;PTK8;RON
Conjugate	Unconjugated
Applications	ELISA, Flow Cyt
Recommended Dilutions	ELISA 1:5000-10000, Flow Cyt 1:100
Formulation & Reconstitution	Lyophilized from sterile PBS, pH 7.4. Normally 5% - 8% trehalose is added as protectants before lyophilization. Please see Certificate of Analysis for specific instructions of reconstitution.
Host Species	Homo sapiens
IgG type	Human IgG1 - kappa
Reactivity	Human
Target	MST1R
Uniprot ID	Q04912
Description	Anti-MST1R(narnatumab biosimilar) mAb
Delivery	In Stock
Yefei_Storage	Store at -20°C to -80°C for 12 months in lyophilized form. After reconstitution, if not intended for use within a month, aliquot and store at -80°C (Avoid repeated freezing and thawing). Lyophilized proteins are shipped at ambient temperature.
Background	Research grade biosimilar. Not for use in therapeutic or diagnostic procedures for humans or animals.
Usage	Research use only

Anti-MST1R (narnatumab biosimilar) mAb ELISA

0.2 µg of Human MST1R, hFc tagged protein per well

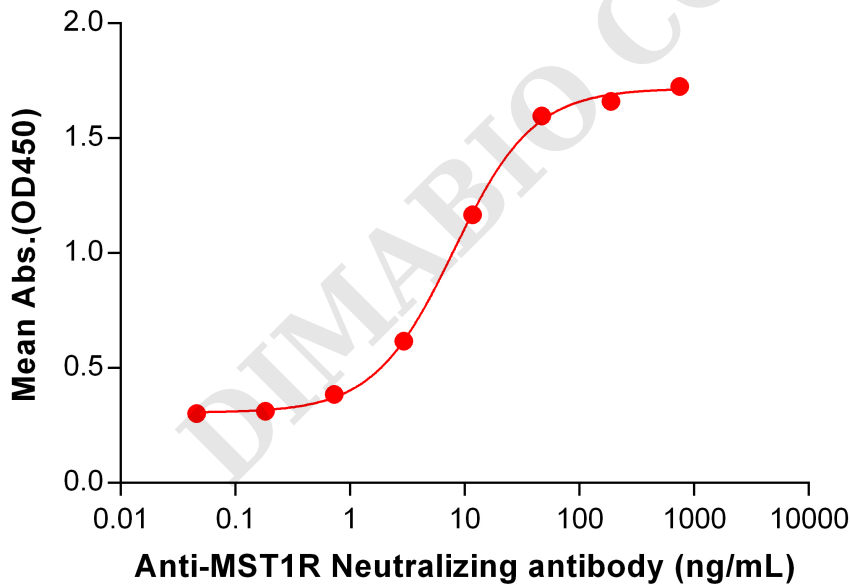


Figure 1. ELISA plate pre-coated by 2 µg/mL (100 µL/well) Human MST1R Protein, hFc Tag (PME100821) can bind Anti-MST1R Neutralizing antibody (BME100118) in a linear range of 0.73-46.88 ng/mL. In order to specifically detect BME100118, mouse anti-human Fab-specific antibody was used as detection antibody.



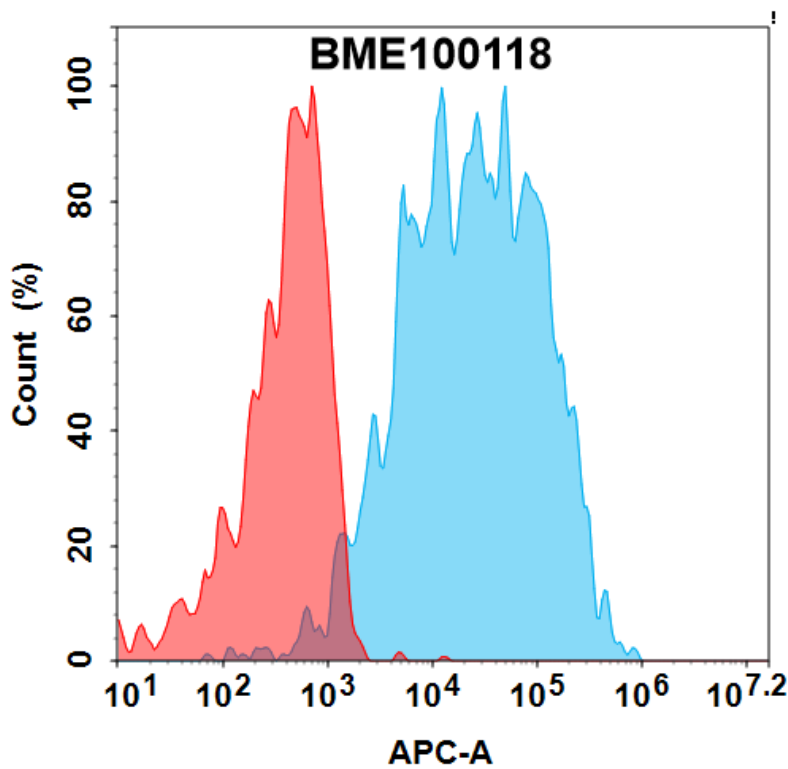


Figure 2. Flow cytometry analysis with 0.5 µg/mL Anti-MST1R(narnatumab biosimilar) mAb (BME100118) on HEK293 cells transfected with Human MST1R protein (Blue histogram) or HEK293 transfected with irrelevant protein (Red histogram).

DIMABIO CONFIDENTIAL

