

PRODUCT INFORMATION

Common Name	Warning: Undefined variable \$hasAttribute\$ in C:\wwwroot\mirror\dimabio.com\wp-content\plugins\woocommerce-print-products\publicclass-woocommerce-print-products-public.php on line 2806
Conjugate	Unconjugated
Synonyms	NKG2D;CD314;KLRK1;NK cell receptor D
Applications	ELISA, Flow Cyt
Recommended Dilutions	ELISA 1:5000-10000, Flow Cyt 1:100
Formulation & Reconstitution	Lyophilized from sterile PBS, pH 7.4. Normally 5% - 8% trehalose is added as protectants before lyophilization. Please see Certificate of Analysis for specific instructions of reconstitution.
Host Species	Humanized
IgG type	Human IgG1(L234A,L235A) - Kappa
Reactivity	Human
Target	NKG2D
Uniprot ID	P26718
Description	Anti-NKG2D(5C5 biosimilar, L234A/L235A) mAb
Delivery	In Stock
Yefei Storage	Store at -20°C to -80°C for 12 months in lyophilized form. After reconstitution, if not intended for use within a month, aliquot and store at -80°C (Avoid repeated freezing and thawing). Lyophilized antibodies are shipped at ambient temperature.
Background	Research grade biosimilar. Not for use in therapeutic or diagnostic procedures for humans or animals.
Usage	Research use only

Anti-NKG2D(5C5 biosimilar, L234A/L235A) mAb ELISA

0.2 µg of Human NKG2D, mFc tagged protein per well

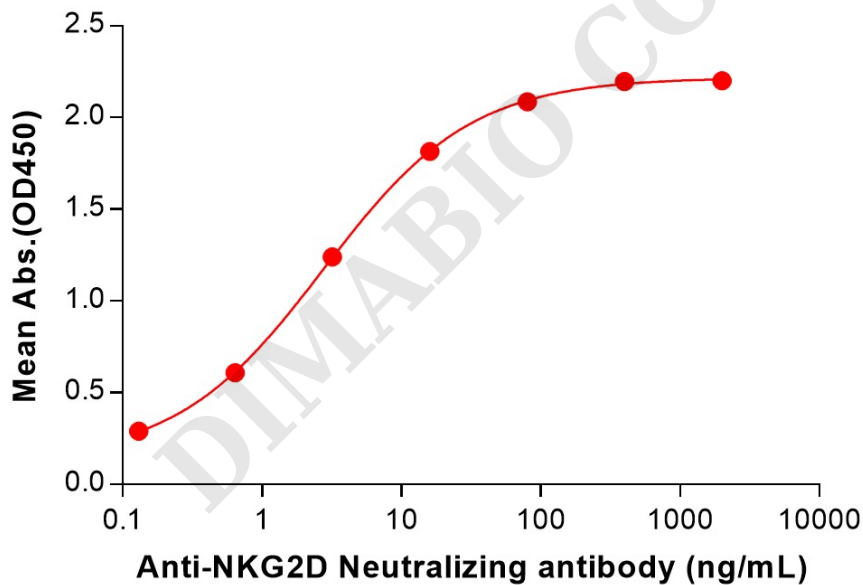


Figure 1. ELISA plate pre-coated by 2 µg/mL (100 µL/well) Human NKG2D Protein, mFc Tag (PME100079) can bind Anti-NKG2D(5C5 biosimilar, L234A/L235A) mAb (BME100229) in a linear range of 0.13–16 ng/mL.



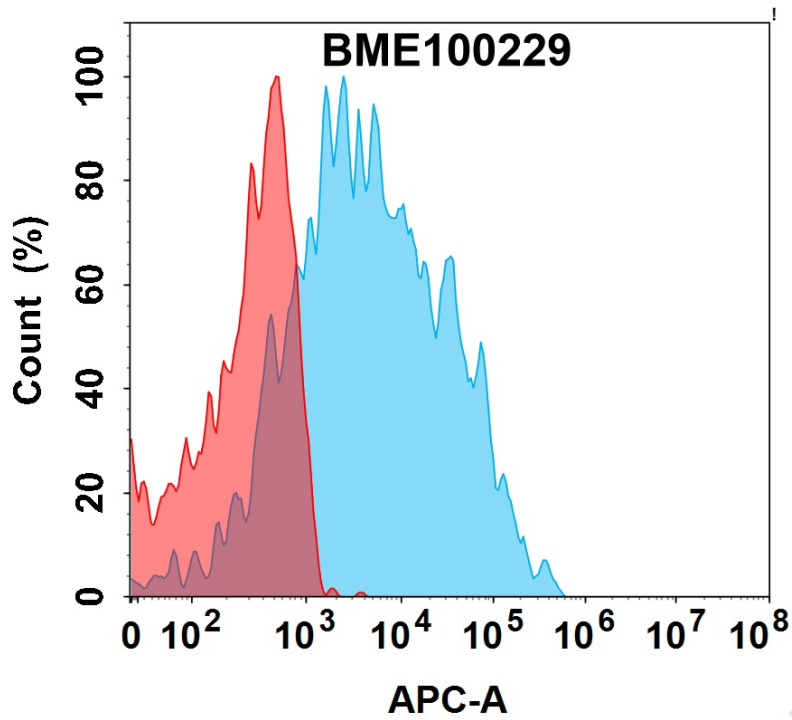


Figure 2. Flow cytometry analysis with 1 μ g/mL Anti-NKG2D(5C5 biosimilar, L234A/L235A) mAb (BME100229) on HEK293 cells transfected with Human NKG2D and DAP10 protein (Blue histogram) or HEK293 transfected with Human DAP10 protein (Red histogram).

DIMABIO CONFIDENTIAL

