

PRODUCT INFORMATION

Clone ID	DM116
Target	OX40
Synonyms	TNFRSF4; OX40; CD134; OX40L receptor; ACT35; TXGP1L
Host Species	Rabbit
Description	Anti-OX40 antibody(DM116); Rabbit mAb
Delivery	In Stock
Uniprot ID	P43489
IgG type	Rabbit IgG
Clonality	Monoclonal
Reactivity	Human
Applications	ELISA; Flow Cyt
Recommended Dilutions	ELISA 1:5000-10000; Flow Cyt 1:100
Purification	Purified from cell culture supernatant by affinity chromatography
Formulation & Reconstitution	Lyophilized from sterile PBS, pH 7.4. Normally 5 % - 8% trehalose is added as protectants before lyophilization. Please see Certificate of Analysis for specific instructions of reconstitution.
Storage & Shipping	Store at -20°C to -80°C for 12 months in lyophilized form. After reconstitution, if not intended for use within a month, aliquot and store at -80°C (Avoid repeated freezing and thawing). Lyophilized proteins are shipped at ambient temperature.
Background	The protein encoded by this gene is a member of the TNF-receptor superfamily. This receptor has been shown to activate NF-kappaB through its interaction with adaptor proteins TRAF2 and TRAF5. Knockout studies in mice suggested that this receptor promotes the expression of apoptosis inhibitors BCL2 and BCL2L1:BCL2-XL; and thus suppresses apoptosis. The knockout studies also suggested the roles of this receptor in CD4 T cell response; as well as in T cell-dependent B cell proliferation and differentiation.
Usage	Research use only
Conjugate	Unconjugated
DIMA Disclaimer	All DIMA recombinant antibodies are genuinely generated by DIMA Biotech. They are all under patent application. Any protein sequencing or reverse engineering attempt is prohibited. We are actively scrutinizing all patent application to ensure no IP infringement.



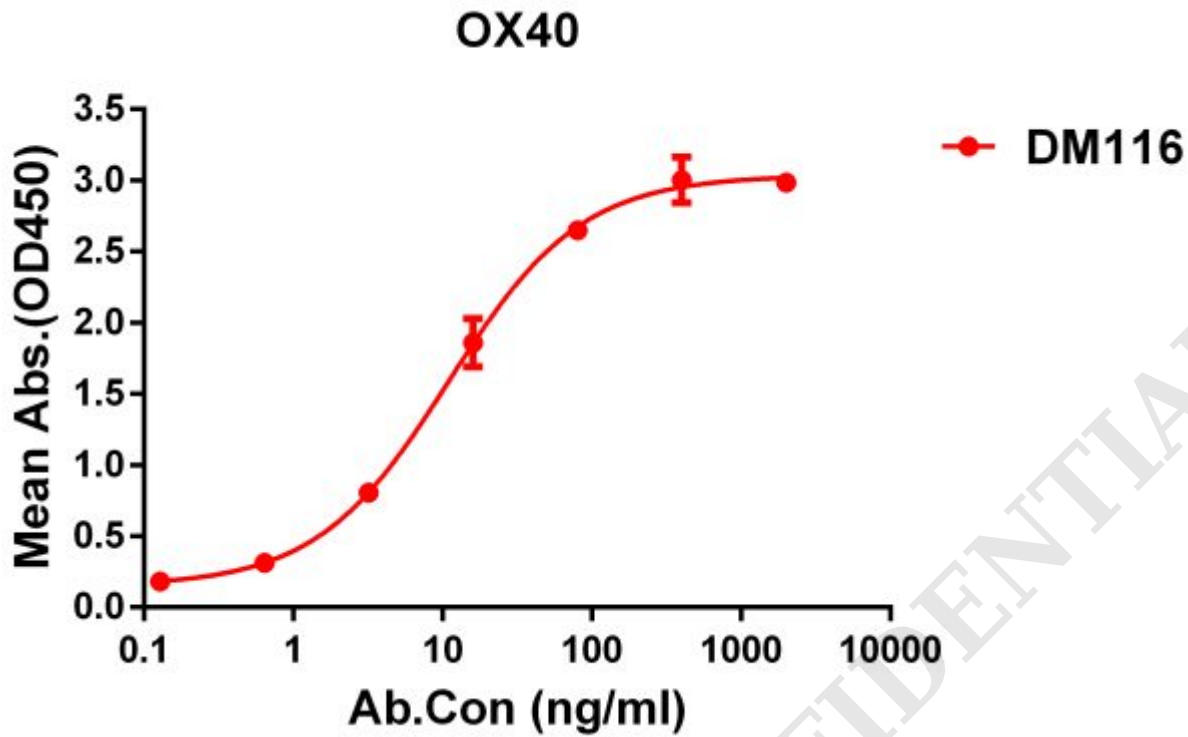


Figure 1. ELISA plate pre-coated by 2 $\mu\text{g/ml}$ (100 $\mu\text{l/well}$) Human OX40 protein, hFc-His tagged protein ([getskuurl sku="PME100022"]) can bind Rabbit anti-OX40 monoclonal antibody (**clone: DM116**) in a linear range of 6-70 ng/ml.

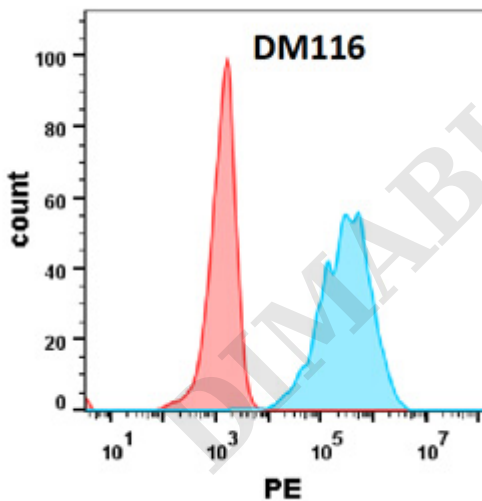


Figure 2. Flow cytometry analysis with Anti-OX40 (**DM116**) on Expi293 cells transfected with human OX40 (Blue histogram) or Expi293 transfected with irrelevant protein (Red histogram).

