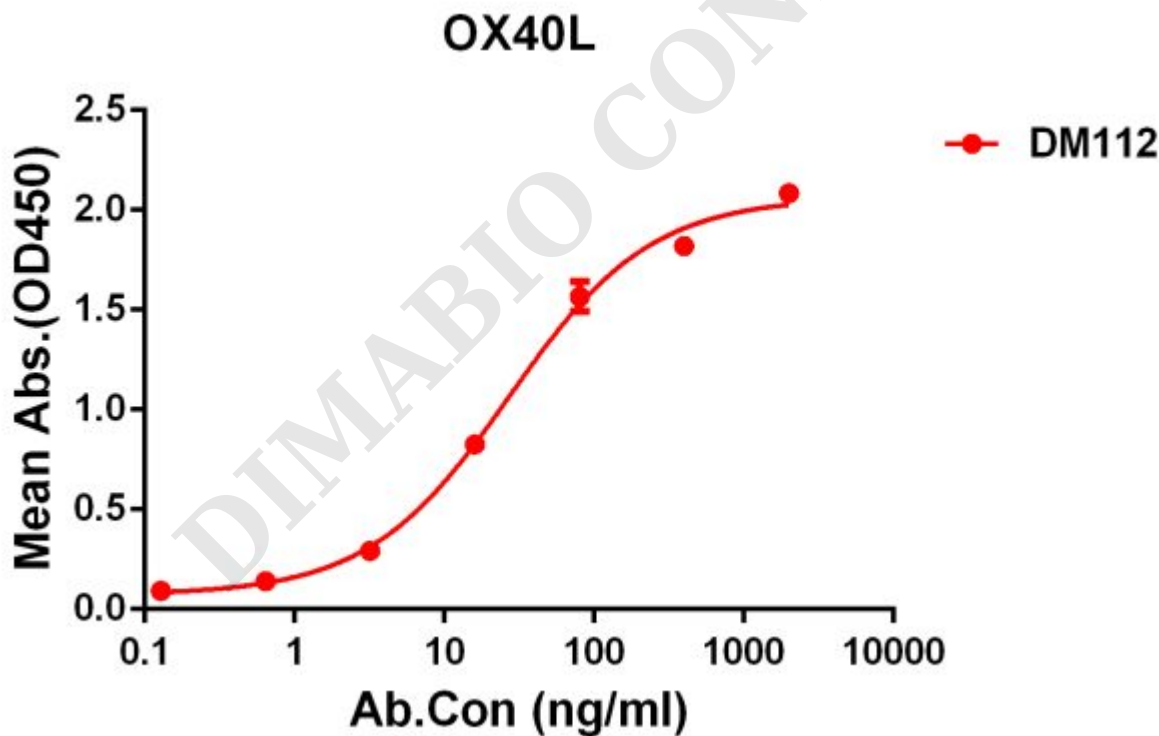


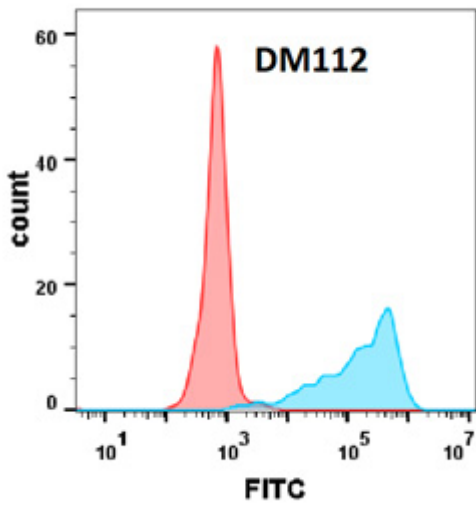
## PRODUCT INFORMATION

<b>Clone ID</b>	<b>Warning:</b> Undefined variable \$hasAttributeValueDescription in C:\wwwroot\mirror\dimabio.com\wp-content\plugins\woocommerce-print-products\publicclass-woocommerce-print-products-public.php on line 2806 DM112
<b>Target</b>	OX40 Ligand
<b>Synonyms</b>	OX40L; TNFSF4; CD252; Glycoprotein Gp34; TXGP1; CD134 ligand; CD134L
<b>Host Species</b>	Rabbit
<b>Description</b>	Anti-OX40 Ligand antibody(DM112); Rabbit mAb
<b>Delivery</b>	In Stock
<b>Uniprot ID</b>	P23510
<b>IgG type</b>	Rabbit IgG
<b>Clonality</b>	Monoclonal
<b>Reactivity</b>	Human
<b>Applications</b>	ELISA; Flow Cyt
<b>Recommended Dilutions</b>	ELISA 1:5000-10000; Flow Cyt 1:100
<b>Purification</b>	Purified from cell culture supernatant by affinity chromatography
<b>Formulation &amp; Reconstitution</b>	Lyophilized from sterile PBS, pH 7.4. Normally 5% - 8% trehalose is added as protectants before lyophilization. Please see Certificate of Analysis for specific instructions of reconstitution.
<b>Yefei Storage</b>	Store at -20°C to -80°C for 12 months in lyophilized form. After reconstitution, if not intended for use within a month, aliquot and store at -80°C (Avoid repeated freezing and thawing). Lyophilized proteins are shipped at ambient temperature.
<b>Background</b>	This gene encodes a cytokine of the tumor necrosis factor (TNF) ligand family. The encoded protein functions in T cell antigen-presenting cell (APC) interactions and mediates adhesion of activated T cells to endothelial cells. Polymorphisms in this gene have been associated with Sjogren's syndrome and systemic lupus erythematosus. Alternative splicing results in multiple transcript variants
<b>Usage</b>	Research use only
<b>Conjugate</b>	Unconjugated
<b>DIMA Disclaimer</b>	All DIMA recombinant antibodies are genuinely generated by DIMA Biotech. They are all under patent application. Any protein sequencing or reverse engineering attempt is prohibited. We are actively scrutinizing all patent application to ensure no IP infringement.



**Figure 1.** ELISA plate pre-coated by 2 µg/ml (100 µl/well) Human OX40L protein, mFc-His tagged protein ([getskuurl sku="PME100021"]) can bind Rabbit anti-OX40L monoclonal antibody (**clone: DM112**) in a linear range of 0.2-90 ng/ml.





**Figure 2.** Flow cytometry analysis with Anti-OX40L (**DM112**) on HEK293 cells transfected with human OX40L (Blue histogram) or HEK293 transfected with irrelevant protein(Red histogram).

DIMABIO CONFIDENTIAL

