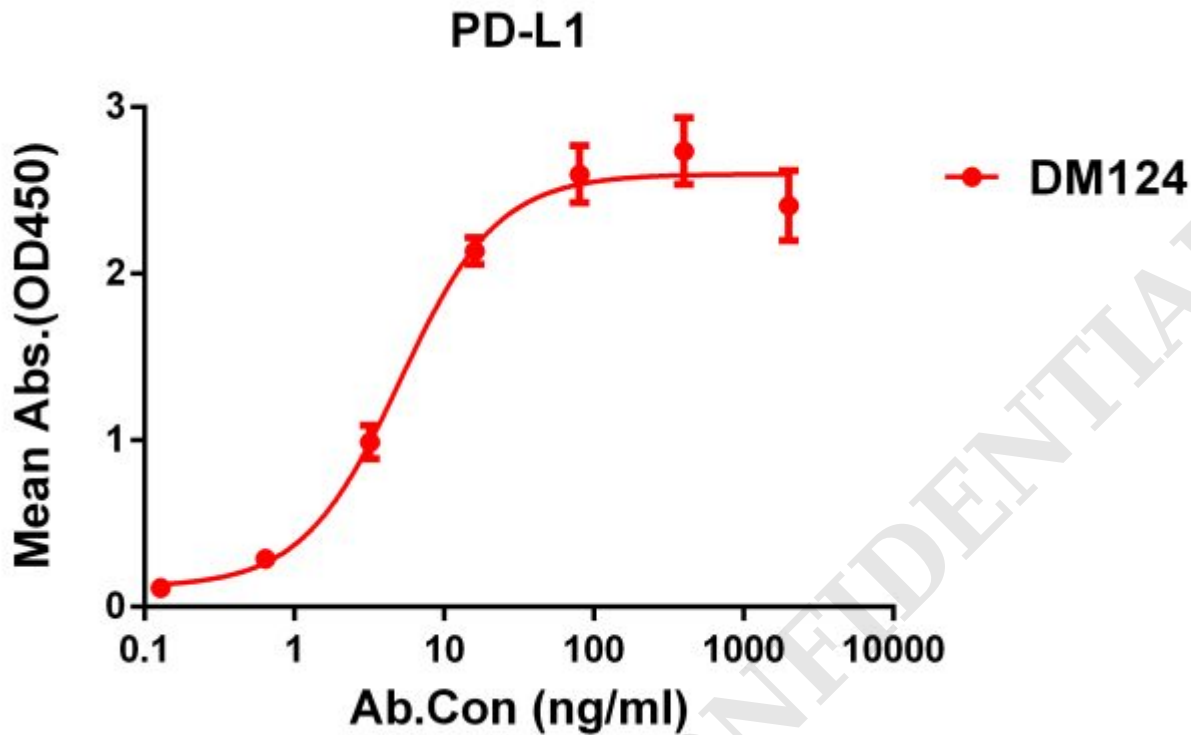


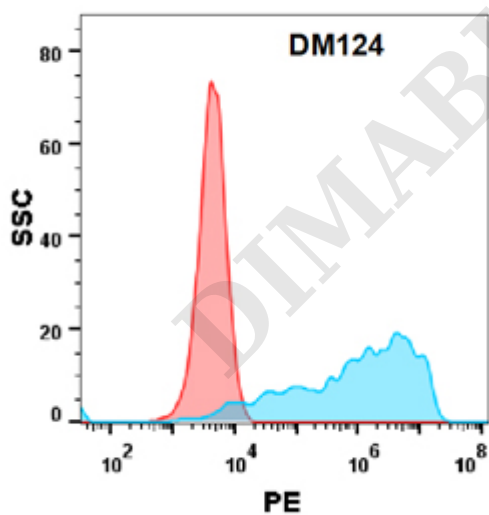
**PRODUCT INFORMATION**

<b>Clone ID</b>	DM124
<b>Target</b>	PDL1
<b>Synonyms</b>	PD-L1; CD274; B7-H1; PDCD1L1; PDCD1LG1
<b>Host Species</b>	Rabbit
<b>Description</b>	Anti-PD-L1 antibody(DM124); Rabbit mAb
<b>Delivery</b>	In Stock
<b>Uniprot ID</b>	Q9NZQ7
<b>IgG type</b>	Rabbit IgG
<b>Clonality</b>	Monoclonal
<b>Reactivity</b>	Human
<b>Applications</b>	ELISA; Flow Cyt
<b>Recommended Dilutions</b>	ELISA 1:5000-10000; Flow Cyt 1:100
<b>Purification</b>	Purified from cell culture supernatant by affinity chromatography
<b>Formulation &amp; Reconstitution</b>	Lyophilized from sterile PBS, pH 7.4. Normally 5 % - 8% trehalose is added as protectants before lyophilization. Please see Certificate of Analysis for specific instructions of reconstitution. Store at -20°C to -80°C for 12 months in lyophilized form. After reconstitution, if not intended for use within a month, aliquot and store at -80°C (Avoid repeated freezing and thawing). Lyophilized proteins are shipped at ambient temperature.
<b>Storage &amp; Shipping</b>	
<b>Background</b>	This gene encodes an immune inhibitory receptor ligand that is expressed by hematopoietic and non-hematopoietic cells; such as T cells and B cells and various types of tumor cells. The encoded protein is a type I transmembrane protein that has immunoglobulin V-like and C-like domains. Interaction of this ligand with its receptor inhibits T-cell activation and cytokine production. During infection or inflammation of normal tissue; this interaction is important for preventing autoimmunity by maintaining homeostasis of the immune response. In tumor microenvironments; this interaction provides an immune escape for tumor cells through cytotoxic T-cell inactivation. Expression of this gene in tumor cells is considered to be prognostic in many types of human malignancies; including colon cancer and renal cell carcinoma. Alternative splicing results in multiple transcript variants.
<b>Usage</b>	Research use only
<b>Conjugate</b>	Unconjugated
<b>DIMA Disclaimer</b>	All DIMA recombinant antibodies are genuinely generated by DIMA Biotech. They are all under patent application. Any protein sequencing or reverse engineering attempt is prohibited. We are actively scrutinizing all patent application to ensure no IP infringement.





**Figure 1.** ELISA plate pre-coated by 1  $\mu$ g/ml (100  $\mu$ l/well) Human PD-L1 protein, mFc His tagged protein ([getskuurl sku="PME100023"]) can bind Rabbit anti-PD-L1 monoclonal antibody (**clone: DM124**) in a linear range of 0.1-15 ng/ml.



**Figure 2.** Flow cytometry analysis with Anti-PD-L1 (**DM124**) on Expi293 cells transfected with human PD-L1 (Blue histogram) or Expi293 transfected with irrelevant protein (Red histogram).

