

PRODUCT INFORMATION

Common Name	Warning: Undefined variable \$hasAttribute\$ in C:\wwwroot\mirror\dimabio.com\wp-content\plugins\woocommerce\print-products\public\class-woocommerce-print-products-public.php on line 2806 MSB0010718C,MSB-0010718C,MSB0010682
Conjugate	Unconjugated
Synonyms	Programmed cell death 1 ligand 1, B7H1, B7-H1, PDL1, PDCD1L1, B7 homolog 1, B7 homologue 1, CD274
Applications	ELISA, Flow Cyt
Recommended Dilutions	ELISA 1:5000-10000, Flow Cyt 1:100
Formulation & Reconstitution	Lyophilized from sterile PBS, pH 7.4. Normally 5 % - 8% trehalose is added as protectants before lyophilization. Please see Certificate of Analysis for specific instructions of reconstitution.
Host Species	Homo sapiens
IgG type	Human IgG1(E356D,M358L) - lambda
Reactivity	Human
Target	PD-L1
Uniprot ID	Q9NZQ7
Description	Anti-PD-L1(avelumab biosimilar) mAb
Delivery	In Stock
Yefei Storage	Store at -20°C to -80°C for 12 months in lyophilized form. After reconstitution, if not intended for use within a month, aliquot and store at -80°C (Avoid repeated freezing and thawing). Lyophilized antibodies are shipped at ambient temperature.
Background	Research grade biosimilar. Not for use in therapeutic or diagnostic procedures for humans or animals.
Usage	Research use only

Anti-PD-L1(avelumab biosimilar) mAb ELISA

0.2 µg of Human PD-L1, mFc-His tagged protein per well

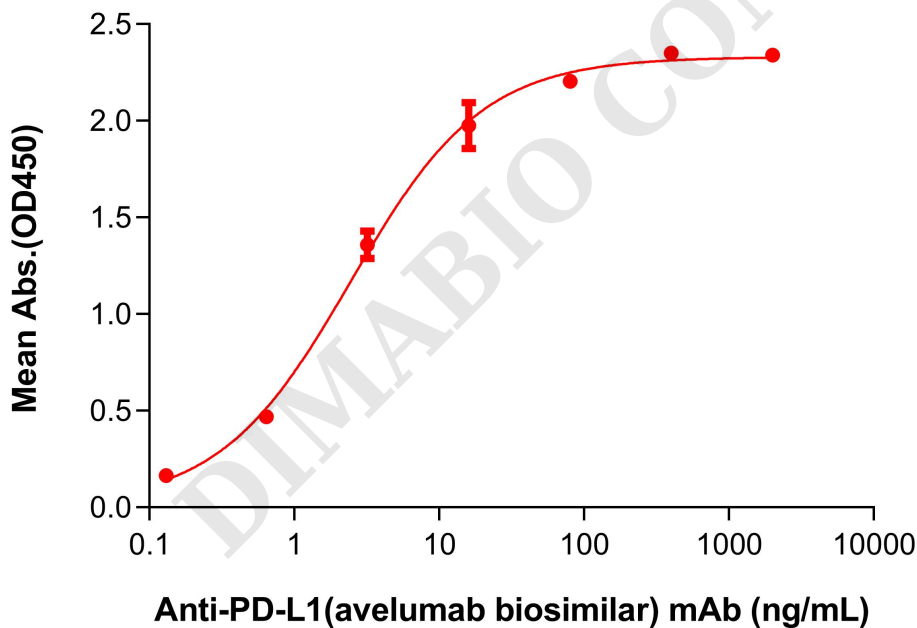


Figure 1. ELISA plate pre-coated by 2 µg/mL (100 µL/well) Human PD-L1 Protein, mFc-His Tag (PME100023) can bind Anti-PD-L1(avelumab biosimilar) mAb (BME100418) in a linear range of 0.64–16 ng/mL.



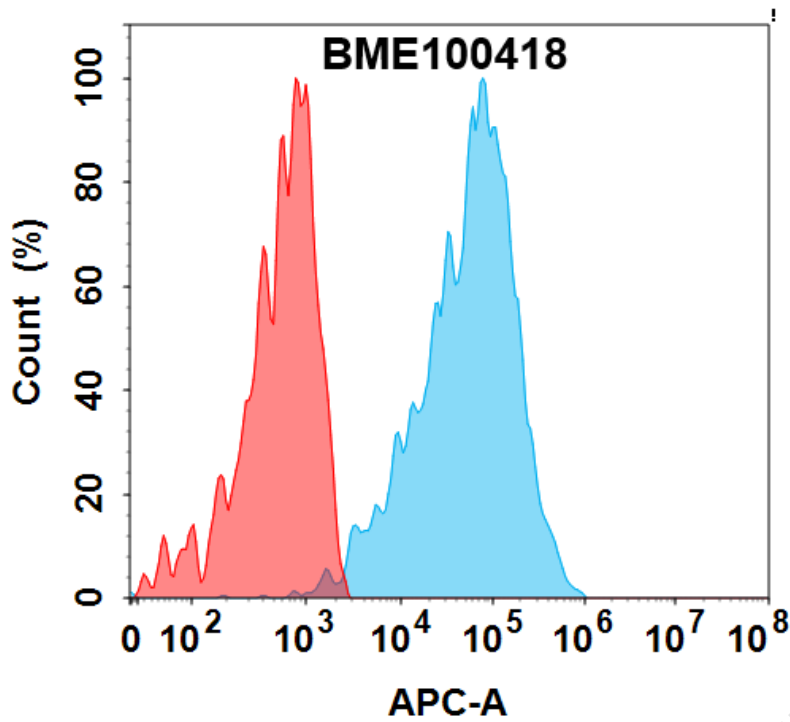


Figure 2. Flow cytometry analysis with 0.5 µg/mL Anti-PD-L1(avelumab biosimilar) mAb (BME100418) on HEK293 cells transfected with Human PD-L1 protein (Blue histogram) or HEK293 transfected with irrelevant protein (Red histogram).

DIMABIO CONFIDENTIAL

