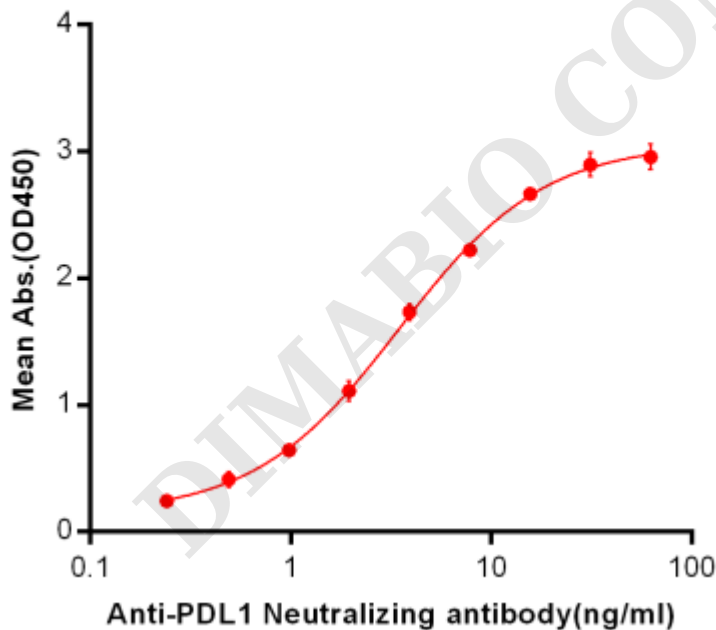


## PRODUCT INFORMATION

<b>Common Name</b>	<b>Warning:</b> Undefined variable \$hasAttributeValueDescription in C:\wwwroot\mirror\dimabio.com\wp-content\plugins\woocommerce-print-products\public\class-woocommerce-print-products-public.php on line 2806 MPDL3280A, RG7446
<b>Conjugate</b>	Unconjugated
<b>Synonyms</b>	PD-L1; CD274; B7-H1; PDCD1L1; PDCD1LG1
<b>Applications</b>	ELISA; Flow Cyt
<b>Recommended Dilutions</b>	ELISA 1:5000-10000; Flow Cyt 1:100
<b>Formulation &amp; Reconstitution</b>	Lyophilized from sterile PBS, pH 7.4. Normally 5% - 8% trehalose is added as protectants before lyophilization. Please see Certificate of Analysis for specific instructions of reconstitution.
<b>Host Species</b>	Humanized
<b>IgG type</b>	Human IgG1 - kappa
<b>Reactivity</b>	Human
<b>Target</b>	PDL1
<b>Uniprot ID</b>	Q9NZQ7
<b>Description</b>	Anti-PDL1 (atezolizumab biosimilar) mAb
<b>Delivery</b>	In Stock
<b>Yefei Storage</b>	Store at -20°C to -80°C for 12 months in lyophilized form. After reconstitution, if not intended for use within a month, aliquot and store at -80°C (Avoid repeated freezing and thawing). Lyophilized proteins are shipped at ambient temperature.
<b>Background</b>	Research grade biosimilar. Not for use in therapeutic or diagnostic procedures for humans or animals.
<b>Usage</b>	Research use only

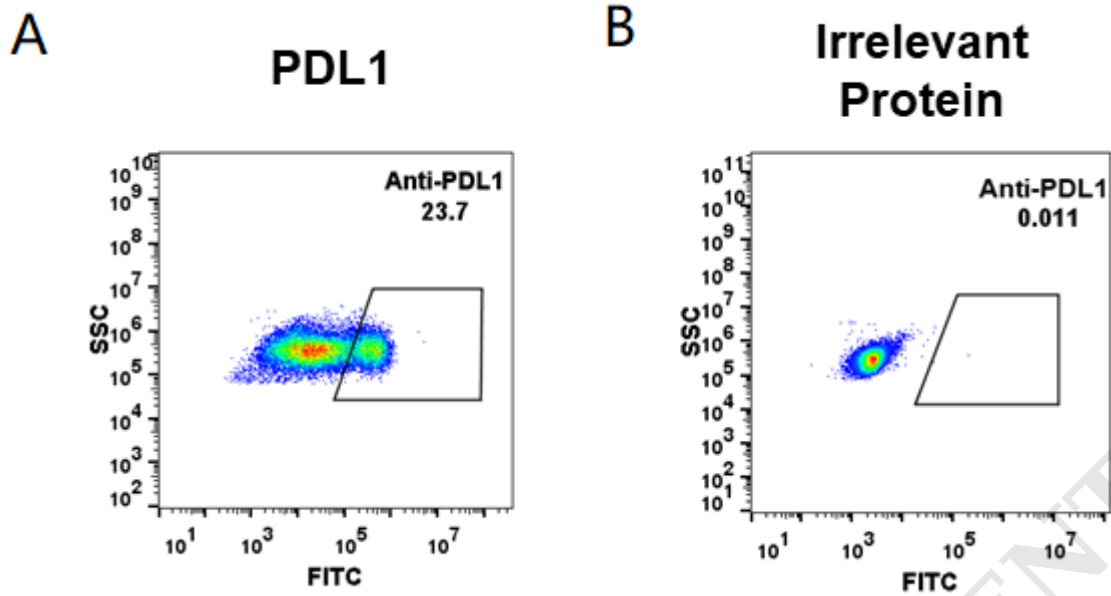
## Anti-PDL1 (atezolizumab biosimilar) mAb ELISA

0.2 µg of Human PDL1, mFc-His Tagged protein per well



**Figure 1.** ELISA plate pre-coated by 2 µg/ml (100 µl/well) Human PDL1, mFc-His tagged protein ([getskuurl sku="PME100023"]) can bind Anti-PDL1 Neutralizing antibody in a linear range of 0.24-7.81 ng/ml.





**Figure 2.** HEK293 cell line transfected with irrelevant protein (**B**) and human PDL1 (**A**) were surface stained with anti-PDL1 neutralizing antibody 1 $\mu$ g/ml (atezolizumab) followed by Alexa 488-conjugated anti-human IgG secondary antibody.

DIMABIO CONFIDENTIAL

