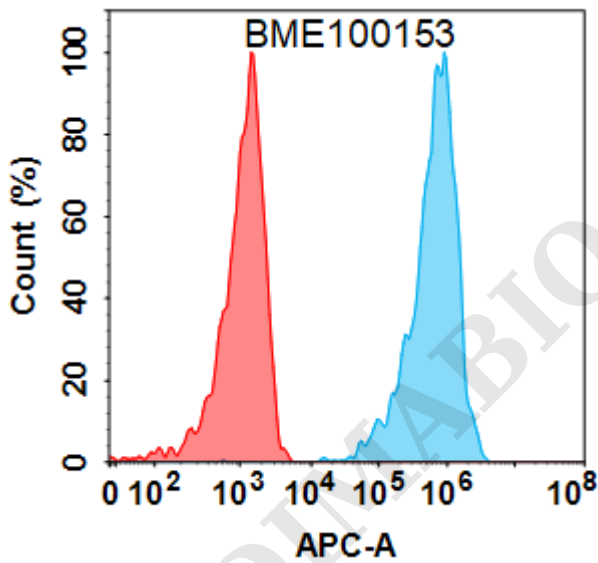


## PRODUCT INFORMATION

<b>Common Name</b>	<b>Warning:</b> Undefined variable \$hasAttributeValueDescription in C:\wwwroot\mirror.dimabio.com\wp-content\plugins\woocommerce-print-products\public\class-woocommerce-print-products-public.php on line 2806 MEDI4736
<b>Synonyms</b>	<b>Warning:</b> Undefined variable \$hasAttributeValueDescription in C:\wwwroot\mirror.dimabio.com\wp-content\plugins\woocommerce-print-products\public\class-woocommerce-print-products-public.php on line 2806 PD-L1,CD274,B7-H1,PDCD1L1,PDCD1LG1
<b>Conjugate</b>	Unconjugated
<b>Applications</b>	Flow Cyt
<b>Recommended Dilutions</b>	Flow Cyt 1:100
<b>Formulation &amp; Reconstitution</b>	Lyophilized from sterile PBS, pH 7.4. Normally 5% - 8% trehalose is added as protectants before lyophilization. Please see Certificate of Analysis for specific instructions of reconstitution.
<b>Host Species</b>	Humanized
<b>IgG type</b>	Human IgG1(K214R,L234F,L235E,P331S) - Kappa
<b>Reactivity</b>	Human
<b>Target</b>	PDL1
<b>Uniprot ID</b>	Q9NZQ7
<b>Description</b>	Anti-PDL1 (durvalumab biosimilar) mAb
<b>Delivery</b>	In Stock
<b>Yefei, Storage</b>	Store at -20°C to -80°C for 12 months in lyophilized form. After reconstitution, if not intended for use within a month, aliquot and store at -80°C (Avoid repeated freezing and thawing). Lyophilized proteins are shipped at ambient temperature.
<b>Background</b>	Research grade biosimilar. Not for use in therapeutic or diagnostic procedures for humans or animals.
<b>Usage</b>	Research use only

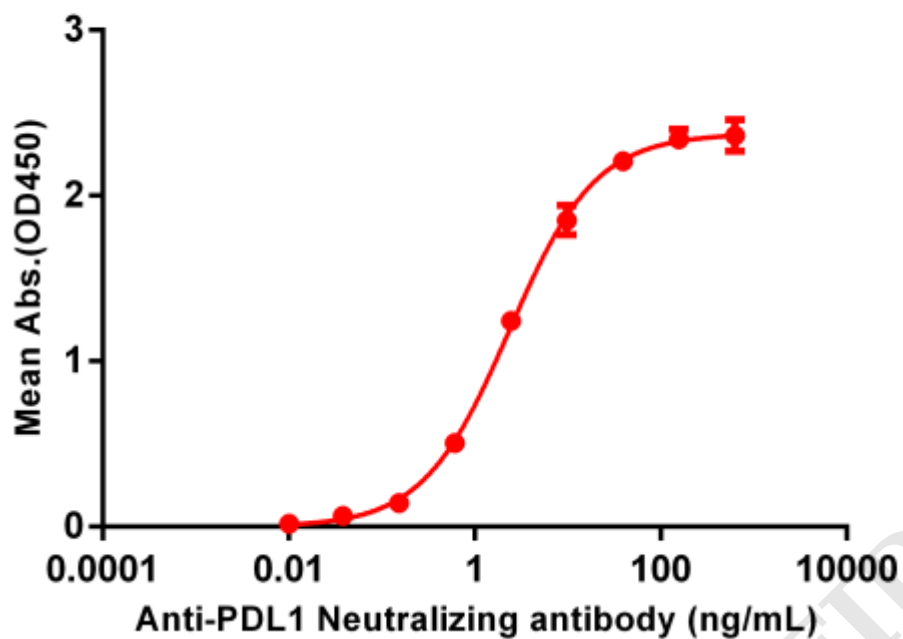


**Figure 1.** Flow cytometry analysis with 1 µg/mL Anti-PDL1(durvalumab biosimilar) mAb (BME100153) on HEK293 cells transfected with Human PDL1 protein (Blue histogram) or HEK293 transfected with irrelevant protein (Red histogram).



## Anti-PDL1 (durvalumab biosimilar) mAb ELISA

0.2  $\mu$ g of Human PDL1, mFc-His tagged protein per well



**Figure 2.** ELISA plate pre-coated by 2  $\mu$ g/ml (100  $\mu$ l/well) Human PDL1, mFc-His tagged protein ([getskuurl sku="PME100023"]) can bind Anti-PDL1 (durvalumab biosimilar) Neutralizing antibody (BME100153) in a linear range of 0.61-9.77 ng/ml.

DIMABIO CONFIDENTIAL

