

PRODUCT INFORMATION

Clone ID	Warning: Undefined variable \$hasAttributeValueDescription in C:\wwwroot\mirror.dimabio.com\wp-content\plugins\woocommerce-print-products\publicclass-woocommerce-print-products-public.php on line 2806 DMC283
Target	SELPLG
Synonyms	PSGL-1;PSGL1;CD162;SELPLG;Selectin P ligand
Host Species	Rabbit
Description	Anti-CD162 antibody(DMC283); IgG1 Chimeric mAb
Delivery	In Stock
Uniprot ID	Q14242
IgG type	Rabbit/Human Fc chimeric IgG1
Clonality	Monoclonal
Reactivity	Human
Applications	Flow Cyt
Recommended Dilutions	Flow Cyt 1:100
Purification	Purified from cell culture supernatant by affinity chromatography
Formulation & Reconstitution	Lyophilized from sterile PBS, pH 7.4. Normally 5% - 8% trehalose is added as protectants before lyophilization. Please see Certificate of Analysis for specific instructions for reconstitution.
Yefel Storage	Store at -20°C to -80°C for 12 months in lyophilized form. After reconstitution, if not intended for use within a month, aliquot and store at -80°C (Avoid repeated freezing and thawing). Lyophilized proteins are shipped at ambient temperature.
Background	This gene encodes a glycoprotein that functions as a high affinity counter-receptor for the cell adhesion molecules P-, E- and L- selectin expressed on myeloid cells and stimulated T lymphocytes. As such, this protein plays a critical role in leukocyte trafficking during inflammation by tethering of leukocytes to activated platelets or endothelia expressing selectins. This protein requires two post-translational modifications; tyrosine sulfation and the addition of the sialyl Lewis x tetrasaccharide (sLe ^x) to its O-linked glycans; for its high-affinity binding activity. Aberrant expression of this gene and polymorphisms in this gene are associated with defects in the innate and adaptive immune response. Alternate splicing results in multiple transcript variants.
Usage	Research use only
Conjugate	Unconjugated
DIMA Disclaimer	All DIMA recombinant antibodies are genuinely generated by DIMA Biotech. They are all under patent application. Any protein sequencing or reverse engineering attempt is prohibited. We are actively scrutinizing all patent application to ensure no IP infringement.

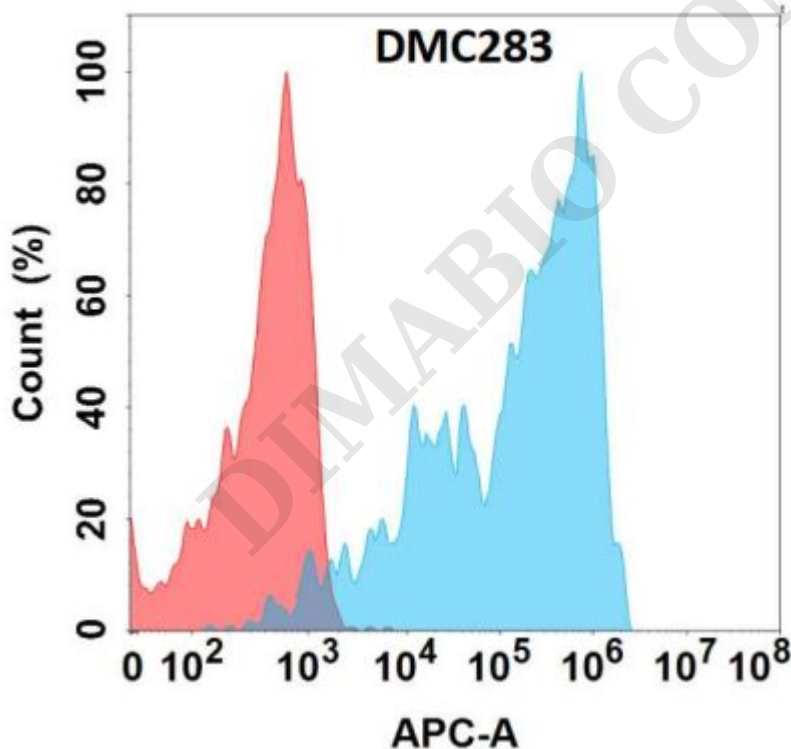


Figure 1. Flow cytometry analysis with Anti-CD162 (DMC283) on HEK293 cells transfected with human CD162 (Blue histogram) or HEK293 transfected with irrelevant protein (Red histogram).

