

PRODUCT INFORMATION

Common Name	Warning: Undefined variable \$hasAttribute\$ in C:\wwwroot\mirror\dimabio.com\wp-content\plugins\woocommerce-print-products\public\class-woocommerce-print-products-public.php on line 2806 VX15/2503 VX15, VX-15
Conjugate	Unconjugated
Synonyms	Semaphorin-4D, C9orf164, CD100, SEMA4
Applications	ELISA, Flow Cyt
Recommended Dilutions	ELISA 1:5000-10000, Flow Cyt 1:100
Formulation & Reconstitution	Lyophilized from sterile PBS, pH 7.4. Normally 5 % - 8% trehalose is added as protectants before lyophilization. Please see Certificate of Analysis for specific instructions of reconstitution.
Host Species	Chimeric Humanized
IgG type	Human IgG4 - Kappa
Reactivity	Human
Target	SEMA4D
Uniprot ID	Q92854
Description	Anti-SEMA4D(pepinemab biosimilar) mAb
Delivery	In Stock
Yefei Storage	Store at -20°C to -80°C for 12 months in lyophilized form. After reconstitution, if not intended for use within a month, aliquot and store at -80°C (Avoid repeated freezing and thawing). Lyophilized antibodies are shipped at ambient temperature.
Background	Research grade biosimilar. Not for use in therapeutic or diagnostic procedures for humans or animals.
Usage	Research use only

Anti-SEMA4D(pepinemab biosimilar) mAb ELISA

0.2 µg of Human SEMA4D, His tagged protein per well

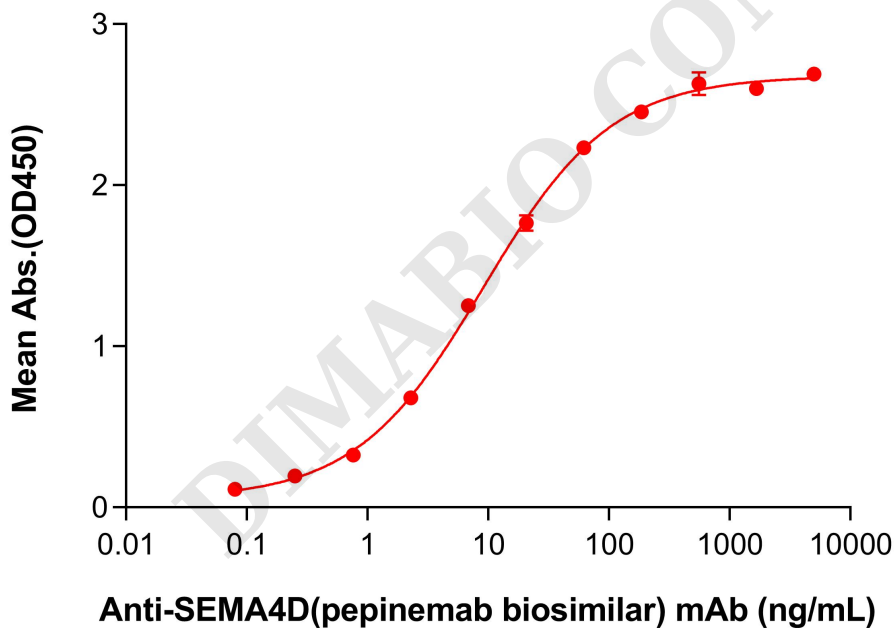


Figure 1. ELISA plate pre-coated by 2 µg/mL (100 µL/well) Human SEMA4D Protein, His Tag (PME101131) can bind Anti-SEMA4D (pepinemab biosimilar) mAb (BME100614) in a linear range of 0.76–61.73 ng/mL.



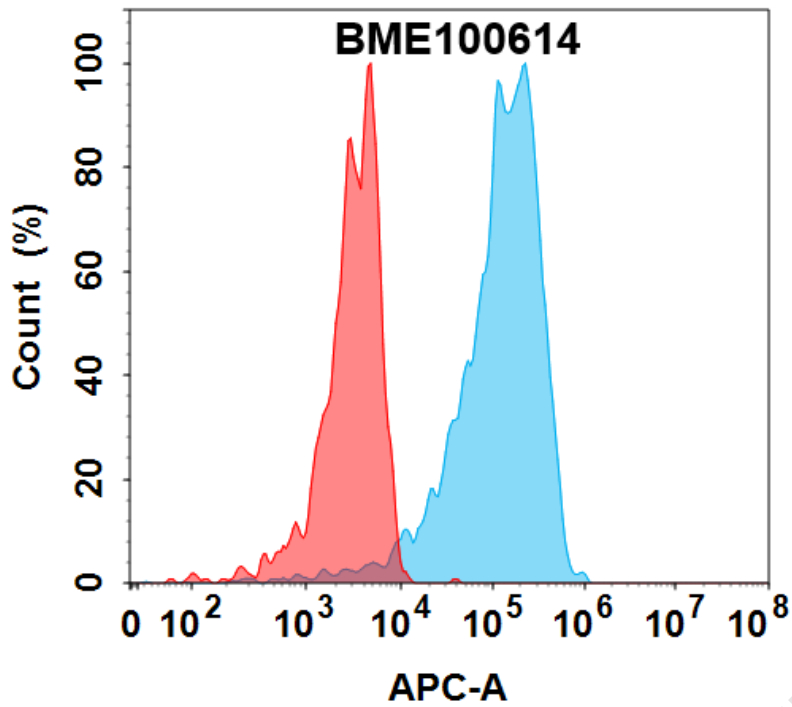


Figure 2. Flow cytometry analysis with 0.5 µg/mL Anti-SEMA4D(pepinemab biosimilar) mAb (BME100614) on HEK293 cells transfected with Human SEMA4D protein (Blue histogram) or HEK293 transfected with irrelevant protein (Red histogram).

DIMABIO CONFIDENTIAL

