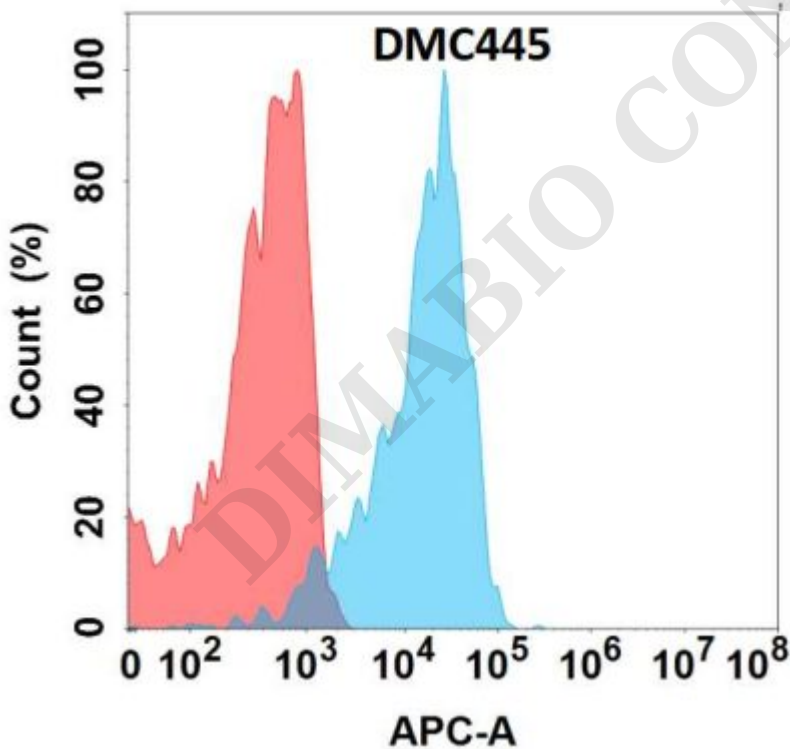


## PRODUCT INFORMATION

<b>Clone ID</b>	<b>Warning:</b> Undefined variable \$hasAttributeValueDescription in C:\wwwroot\mirror.dimabio.com\wp-content\plugins\woocommerce-print-products\publicclass-woocommerce-print-products-public.php on line 2806 DMC445
<b>Target</b>	SLAMF1
<b>Synonyms</b>	SLAMF1; CD150; CDw150; SLAM; IPO-3
<b>Host Species</b>	Rabbit
<b>Description</b>	Anti-SLAMF1 antibody(DMC445); IgG1 Chimeric mAb
<b>Delivery</b>	In Stock
<b>Uniprot ID</b>	Q13291
<b>IgG type</b>	Rabbit/Human Fc chimeric IgG1
<b>Clonality</b>	Monoclonal
<b>Reactivity</b>	Human
<b>Applications</b>	Flow Cyt
<b>Recommended Dilutions</b>	Flow Cyt 1:100
<b>Purification</b>	Purified from cell culture supernatant by affinity chromatography
<b>Formulation &amp; Reconstitution</b>	Lyophilized from sterile PBS, pH 7.4. Normally 5% - 8% trehalose is added as protectants before lyophilization. Please see Certificate of Analysis for specific instructions of reconstitution.
<b>Yefel Storage</b>	Store at -20°C to -80°C for 12 months in lyophilized form. After reconstitution, if not intended for use within a month, aliquot and store at -80°C (Avoid repeated freezing and thawing). Lyophilized proteins are shipped at ambient temperature.
<b>Background</b>	SLAMF1 (Signaling Lymphocytic Activation Molecule Family Member 1) is a Protein Coding gene. Diseases associated with SLAMF1 include Measles and Subacute Sclerosing Panencephalitis. Among its related pathways are Dendritic Cells Developmental Lineage Pathway and T Cell Co-Signaling Pathway: Ligand-Receptor Interactions. Gene Ontology (GO) annotations related to this gene include antigen binding. An important paralog of this gene is LY9.
<b>Usage</b>	Research use only
<b>Conjugate</b>	Unconjugated
<b>DIMA Disclaimer</b>	All DIMA recombinant antibodies are genuinely generated by DIMA Biotech. They are all under patent application. Any protein sequencing or reverse engineering attempt is prohibited. We are actively scrutinizing all patent application to ensure no IP infringement.



**Figure 1.** Flow cytometry analysis with Anti-SLAMF1 (DMC445) on HEK293 cells transfected with human SLAMF1 (Blue histogram) or HEK293 transfected with irrelevant protein (Red histogram).

