

**PRODUCT INFORMATION**

<b>Common Name</b>	G3D2
<b>Synonyms</b>	TNFRSF13B
<b>Applications</b>	ELISA
<b>Recommended Dilutions</b>	ELISA 1:5000-10000
<b>Formulation &amp; Reconstitution</b>	Lyophilized from sterile PBS, pH 7.4. Normally 5% - 8% trehalose is added as protectants before lyophilization. Please see Certificate of Analysis for specific instructions of reconstitution.
<b>Host Species</b>	Chimeric
<b>IgG type</b>	IgG1 - kappa
<b>Reactivity</b>	Human
<b>Target</b>	TACI
<b>Uniprot ID</b>	O14836
<b>Description</b>	Anti-TACI(G3D2 biosimilar) mAb
<b>Delivery</b>	In Stock
<b>Storage &amp; Shipping</b>	Store at -20°C to -80°C for 12 months in lyophilized form. After reconstitution, if not intended for use within a month, aliquot and store at -80°C (Avoid repeated freezing and thawing). Lyophilized antibodies are shipped at ambient temperature.
<b>Background</b>	Research grade biosimilar. Not for use in therapeutic or diagnostic procedures for humans or animals.
<b>Usage</b>	Research use only
<b>Conjugate</b>	Unconjugated
<b>DIMA Disclaimer</b>	All DIMA recombinant antibodies are genuinely generated by DIMA Biotech. They are all under patent application. Any protein sequencing or reverse engineering attempt is prohibited. We are actively scrutinizing all patent application to ensure no IP infringement.



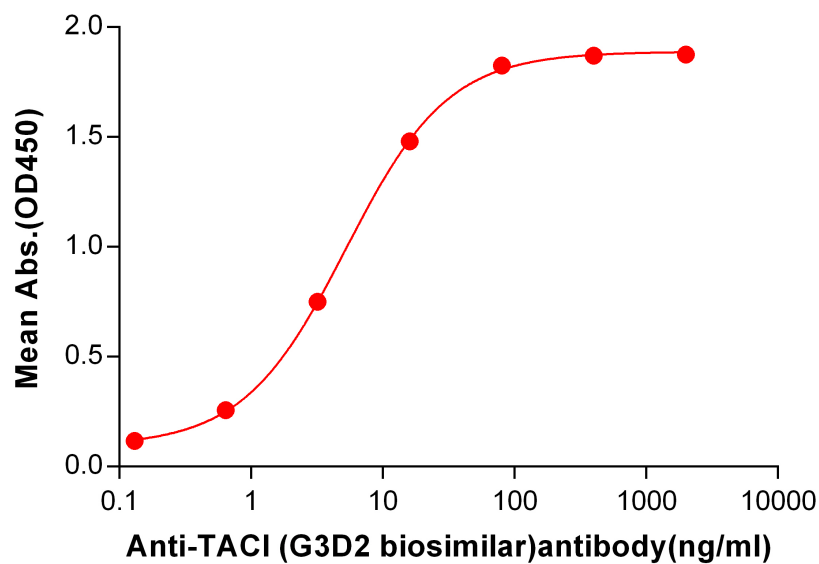
**Anti-TACI (G3D2 biosimilar) mAb ELISA**0.2  $\mu$ g of Human TACI, hFc tagged protein per well

Figure 1. ELISA plate pre-coated by 2  $\mu$ g/mL (100  $\mu$ L/well) Human TACI Protein, hFc Tag (PME100094) can bind Anti-TACI(G3D2 biosimilar) mAb (BME100276) in a linear range of 0.64-80 ng/mL. In order to specifically detect BME100276, mouse anti-human Fab-specific antibody was used as detection antibody.

DIMABIO CONFIDENTIAL

