

PRODUCT INFORMATION

Common Name	MORAb-004
Synonyms	CD248; CD164L1
Applications	ELISA, Flow Cyt
Recommended Dilutions	ELISA 1:5000-10000, Flow Cyt 1:100
Formulation & Reconstitution	Lyophilized from sterile PBS, pH 7.4. Normally 5% - 8% trehalose is added as protectants before lyophilization. Please see Certificate of Analysis for specific instructions of reconstitution.
Host Species	Chimeric Humanized
IgG type	IgG1(E239D,M241L,S286F)
Reactivity	Human
Target	TEM1
Uniprot ID	Q9HCU0
Description	Anti-TEM1(ontuxizumab biosimilar) mAb
Delivery	In Stock
Storage & Shipping	Store at -20°C to -80°C for 12 months in lyophilized form. After reconstitution, if not intended for use within a month, aliquot and store at -80°C (Avoid repeated freezing and thawing). Lyophilized antibodies are shipped at ambient temperature.
Background	Research grade biosimilar. Not for use in therapeutic or diagnostic procedures for humans or animals.
Usage	Research use only
Conjugate	Unconjugated
DIMA Disclaimer	All DIMA recombinant antibodies are genuinely generated by DIMA Biotech. They are all under patent application. Any protein sequencing or reverse engineering attempt is prohibited. We are actively scrutinizing all patent application to ensure no IP infringement.



Anti-TEM1(ontuxizumab biosimilar) mAb ELISA

0.2 μg of Human TEM1, His tagged protein per well

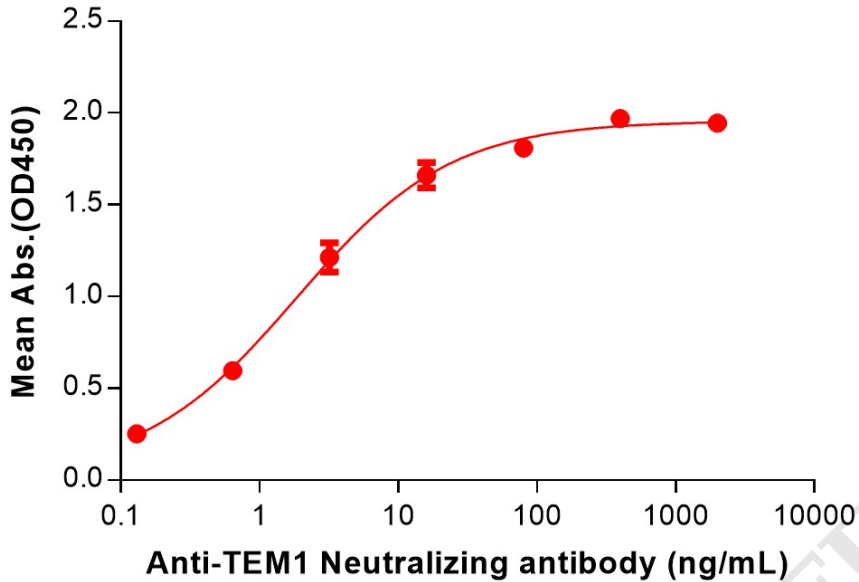


Figure 1. ELISA plate pre-coated by 2 $\mu\text{g}/\text{mL}$ (100 $\mu\text{L}/\text{well}$) Human TEM1 Protein, His Tag (PME100723) can bind Anti-TEM1(ontuxizumab biosimilar) mAb (BME100216) in a linear range of 0.13-16 ng/mL.

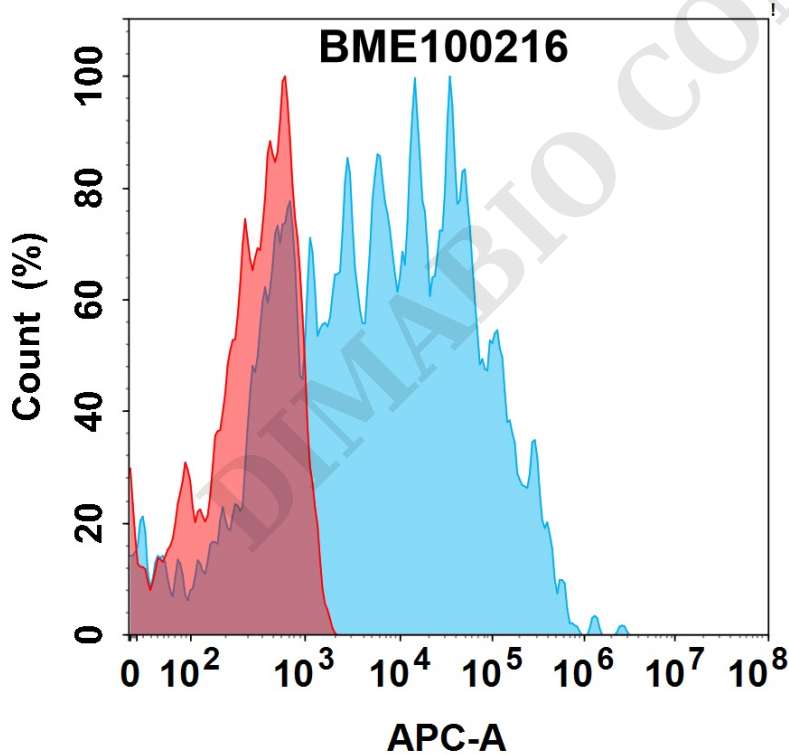


Figure 2. Flow cytometry analysis with 1 $\mu\text{g}/\text{mL}$ Anti-TEM1(ontuxizumab biosimilar) mAb (BME100216) on Expi293 cells transfected with Human TEM1 protein (Blue histogram) or Expi293 transfected with irrelevant protein (Red histogram).

