

PRODUCT INFORMATION

Common Name	TSR-022
Synonyms	HAVCR2;TIM3;TIMD3;FLJ14428;KIM3
Applications	ELISA; Flow Cyt
Recommended Dilutions	ELISA 1:5000-10000; Flow Cyt 1:100
Formulation & Reconstitution	Lyophilized from sterile PBS, pH 7.4. Normally 5% - 8% trehalose is added as protectants before lyophilization. Please see Certificate of Analysis for specific instructions of reconstitution.
Host Species	Humanized
IgG type	IgG4
Reactivity	Human
Target	TIM3
Uniprot ID	Q8TDQ0
Description	Anti-TIM3 (cobolimab biosimilar) mAb
Delivery	In Stock
Storage & Shipping	Store at -20°C to -80°C for 12 months in lyophilized form. After reconstitution, if not intended for use within a month, aliquot and store at -80°C (Avoid repeated freezing and thawing). Lyophilized proteins are shipped at ambient temperature.
Background	Research grade biosimilar. Not for use in therapeutic or diagnostic procedures for humans or animals.
Usage	Research use only
Conjugate	Unconjugated
DIMA Disclaimer	All DIMA recombinant antibodies are genuinely generated by DIMA Biotech. They are all under patent application. Any protein sequencing or reverse engineering attempt is prohibited. We are actively scrutinizing all patent application to ensure no IP infringement.



Anti-TIM3 (cobolimab biosimilar) mAb ELISA

0.2 μ g of Human TIM3, mFc-His Tagged protein per well

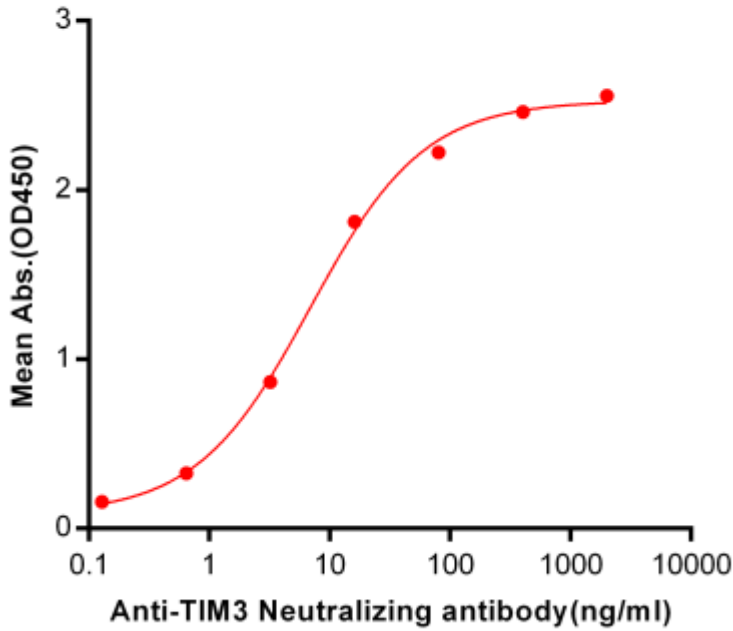


Figure 1. ELISA plate pre-coated by 2 μ g/ml (100 μ l/well) Human TIM3, mFc-His tagged protein ([getskuurl sku="PME100030"]) can bind Anti-TIM3 Neutralizing antibody in a linear range of 0.64-80 ng/ml.

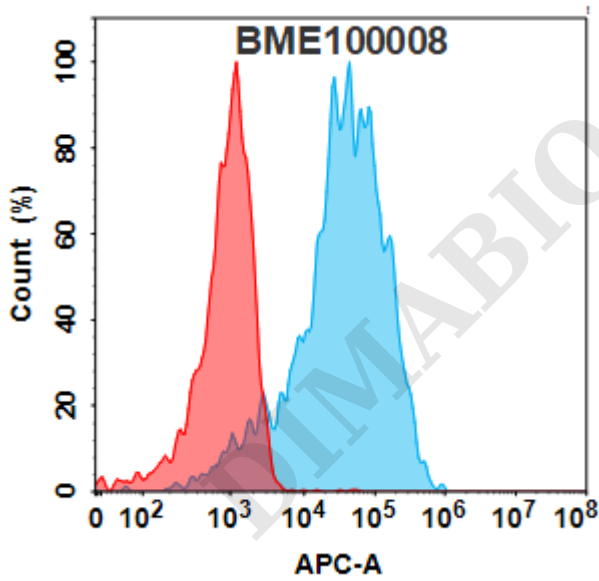


Figure 2. Flow cytometry analysis with 1 μ g/mL Anti-TIM3 (cobolimab biosimilar) mAb (BME100008) on Expi293 cells transfected with Human TIM3 protein (Blue histogram) or Expi293 transfected with irrelevant protein (Red histogram).

