

PRODUCT INFORMATION

Common Name	Warning: Undefined variable \$hasAttributeValueDescription in C:\wwwroot\mirror\dimabio.com\wp-content\plugins\woocommerce-print-products\publicclass-woocommerce-print-products-public.php on line 2806 MBG-453
Conjugate	Unconjugated
Synonyms	HAVCR2, TIMD3
Applications	ELISA, Flow Cyt
Recommended Dilutions	ELISA 1:5000-10000, Flow Cyt 1:100
Formulation & Reconstitution	Lyophilized from sterile PBS, pH 7.4. Normally 5 % - 8% trehalose is added as protectants before lyophilization. Please see Certificate of Analysis for specific instructions.
Host Species	Humanized
IgG type	Human IgG4 - Kappa
Reactivity	Human
Target	TIM3
Uniprot ID	Q8TDQ0
Description	Anti-TIM3(sabatolimab biosimilar) mAb
Delivery	In Stock
Yefei Storage	Store at -20°C to -80°C for 12 months in lyophilized form. After reconstitution, if not intended for use within a month, aliquot and store at -80°C (Avoid repeated freezing and thawing). Lyophilized antibodies are shipped at ambient temperature.
Background	Research grade biosimilar. Not for use in therapeutic or diagnostic procedures for humans or animals.
Usage	Research use only

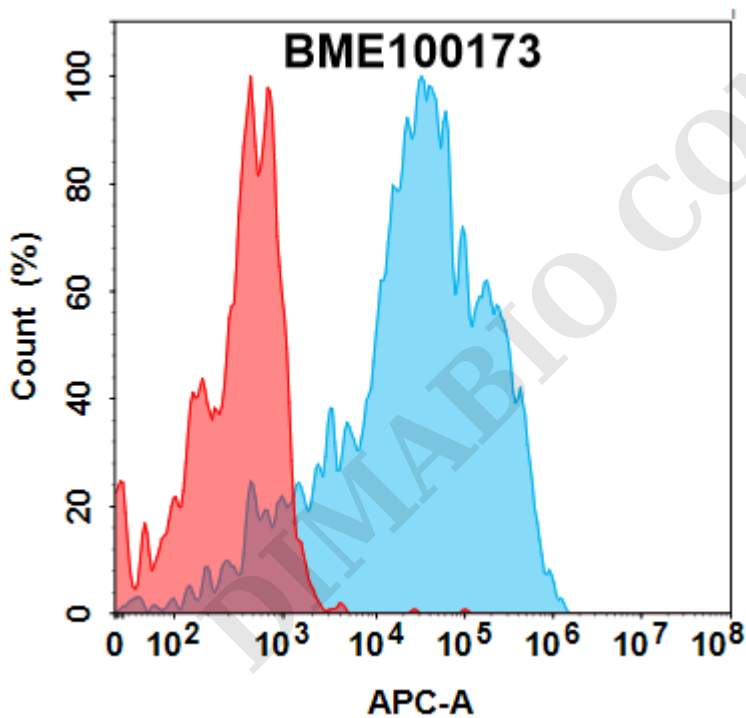


Figure 1. Flow cytometry analysis with 1 μ g/mL Anti-TIM3(sabatolimab biosimilar) mAb (BME100173) on HEK293 cells transfected with Human TIM3 protein (Blue histogram) or HEK293 transfected with irrelevant protein (Red histogram).



Anti-TIM3(sabatolimab biosimilar) mAb ELISA

0.2 μ g of Human TIM3, mFc-His tagged protein per well

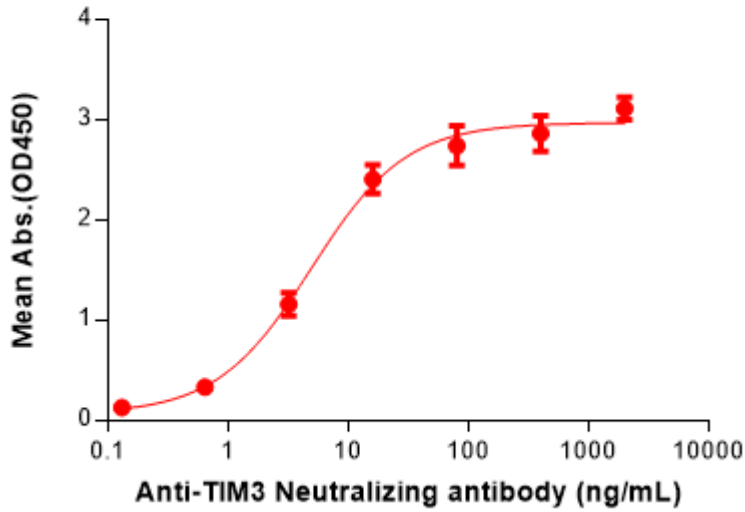


Figure 2. ELISA plate pre-coated by 2 μ g/mL (100 μ L/well) Human TIM3 Protein, mFc-His Tag(PME100030) can bind Anti-TIM3 (sabatolimab biosimilar) mAb(BME100173) in a linear range of 0.64-16 ng/mL.

DIMABIO CONFIDENTIAL

