

PRODUCT INFORMATION

Common Name	Warning: Undefined variable \$hasAttribute\$ in C:\wwwroot\mirror\dimabio.com\wp-content\plugins\woocommerce-print-products\public\class-woocommerce-print-products-public.php on line 2806 PF 6480605, PF-6480605, RVT-3101, 1D1-1.31, afimkibart
Conjugate	Unconjugated
Synonyms	TL1:VEGI
Applications	ELISA, Flow Cyt
Recommended Dilutions	ELISA 1:5000-10000, Flow Cyt 1:100
Formulation & Reconstitution	Lyophilized from sterile PBS, pH 7.4. Normally 5% - 8% trehalose is added as protectants before lyophilization. Please see Certificate of Analysis for specific instructions of reconstitution.
Host Species	Humanized
IgG type	Human IgG1(L234A,L235A,G237A) - Kappa
Reactivity	Human
Target	TNFSF15
Uniprot ID	O95150
Description	Anti-TNFSF15(PF-06480605 biosimilar) mAb
Delivery	In Stock
Yefei Storage	Store at -20°C to -80°C for 12 months in lyophilized form. After reconstitution, if not intended for use within a month, aliquot and store at -80°C (Avoid repeated freezing and thawing). Lyophilized antibodies are shipped at ambient temperature.
Background	Research grade biosimilar. Not for use in therapeutic or diagnostic procedures for humans or animals.
Usage	Research use only

Anti-TNFSF15(PF-06480605 biosimilar) mAb ELISA

0.2 µg of Human TNFSF15, hFc tagged protein per well

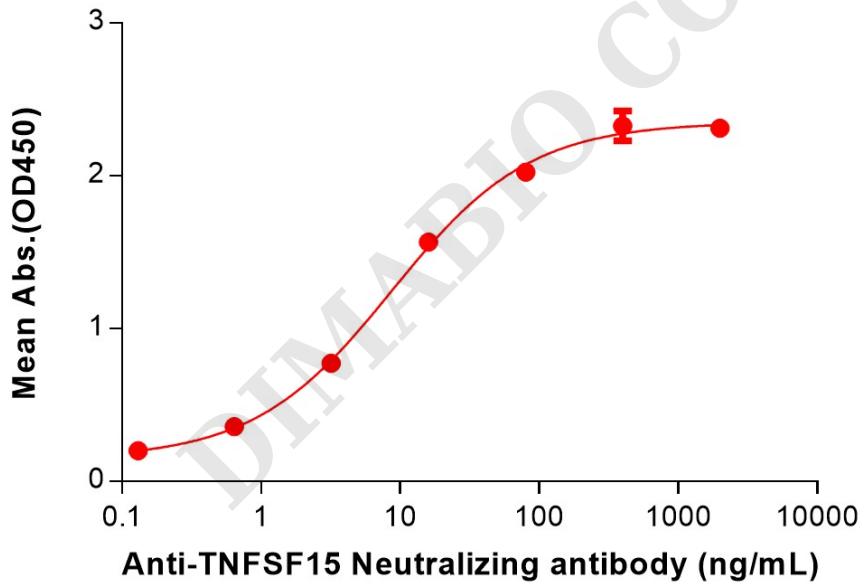


Figure 1. ELISA plate pre-coated by 2 µg/mL (100 µL/well) Human TNFSF15 Protein, hFc Tag (PME100752) can bind Anti-TNFSF15(PF-06480605 biosimilar) mAb (BME100222) in a linear range of 0.64–80 ng/mL. In order to specifically detect BME100222, mouse anti-human Fab-specific antibody was used as detection antibody.



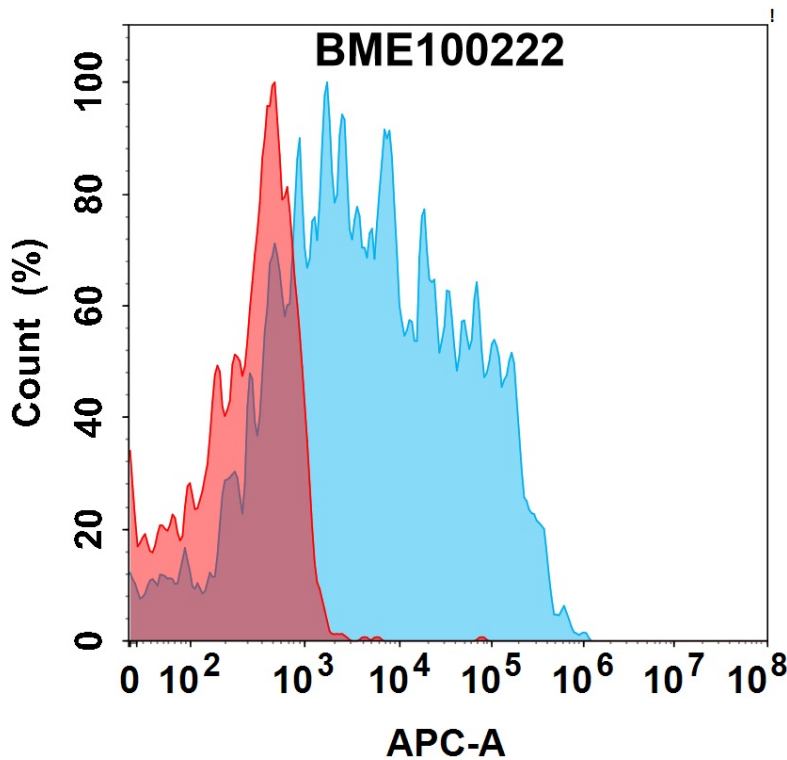


Figure 2. Flow cytometry analysis with 15 μ g/mL Anti-TNFSF15(PF-06480605 biosimilar) mAb (BME100222) on HEK293 cells transfected with Human TNFSF15 protein (Blue histogram) or HEK293 transfected with irrelevant protein (Red histogram).

Anti-TNFSF15(PF-06480605 biosimilar) mAb ELISA

0.2 μ g of Human TNFSF15 Trimer, hFc tagged protein per well

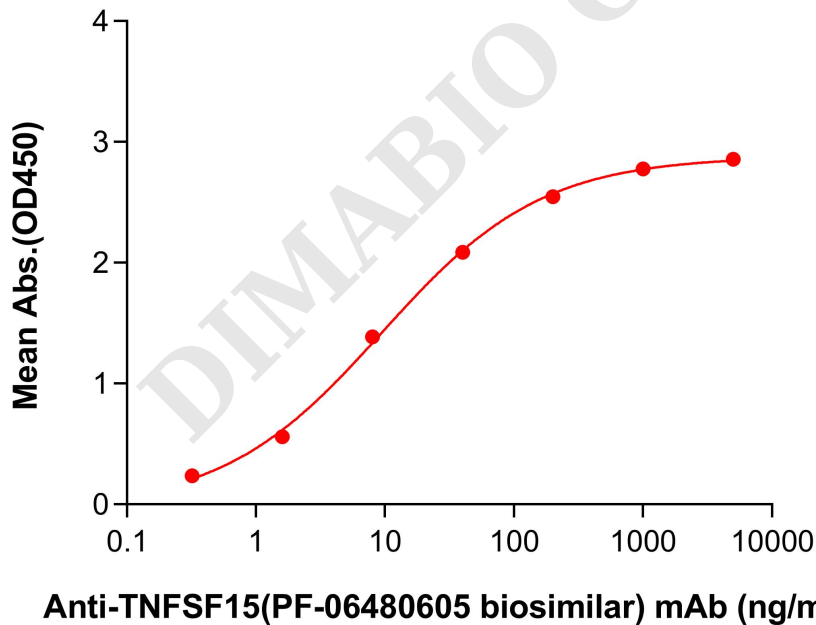


Figure 3. ELISA plate pre-coated by 2 μ g/mL (100 μ L/well) Human TNFSF15 Trimer, hFc Tag (PME101840) can bind Anti-TNFSF15(PF-06480605 biosimilar) mAb (BME100222) in a linear range of 1.6–40 ng/mL. In order to specifically detect BME100222, mouse anti-human Fab-specific antibody was used as detection antibody.



Anti-TNFSF15(PF-06480605 biosimilar) mAb ELISA

0.2 µg of Human TNFSF15, His tagged protein per well

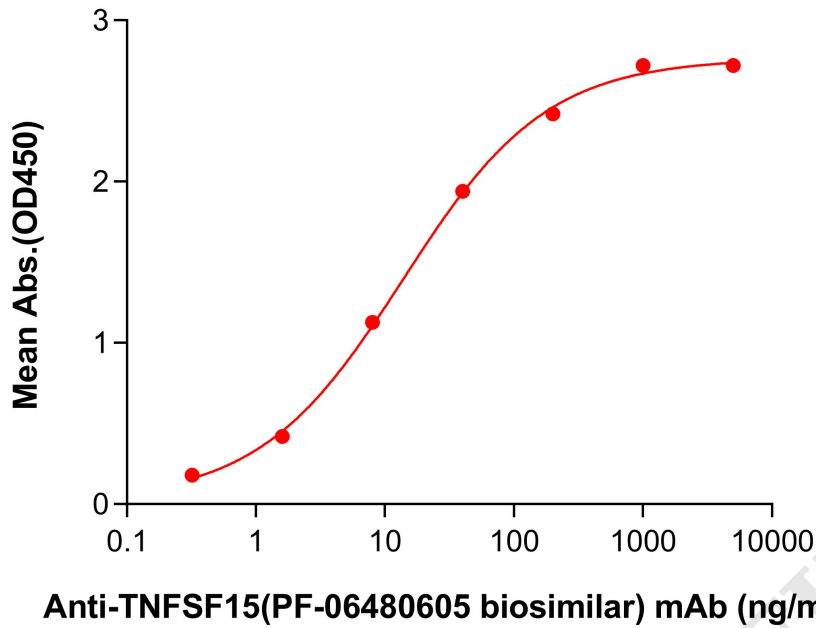


Figure 4. ELISA plate pre-coated by 2 µg/mL (100 µL/well) Human TNFSF15, His Tag (PME101723) can bind Anti-TNFSF15(PF-06480605 biosimilar) mAb (BME100222) in a linear range of 1.6–40 ng/mL.

