

PRODUCT INFORMATION

Common Name	Warning: Undefined variable \$hasAttributeValueDescription in C:\wwwroot\mirror.dimabio.com\wp-content\plugins\woocommerce-print-products\publicclass-woocommerce-print-products-public.php on line 2806
Conjugate	Unconjugated
Synonyms	TREM-2
Applications	ELISA
Recommended Dilutions	ELISA 1:5000-10000
Formulation & Reconstitution	Lyophilized from sterile PBS, pH 7.4. Normally 5 % - 8% trehalose is added as protectants before lyophilization. Please see Certificate of Analysis for specific instructions of reconstitution.
Host Species	Humanized
IgG type	Human IgG1(L234A,L235A) - Kappa
Reactivity	Human
Target	TREM2
Uniprot ID	Q9NZC2
Description	Anti-TREM2(AL002 biosimilar) mAb
Delivery	In Stock
Yefei Storage	Store at -20°C to -80°C for 12 months in lyophilized form. After reconstitution, if not intended for use within a month, aliquot and store at -80°C (Avoid repeated freezing and thawing). Lyophilized antibodies are shipped at ambient temperature.
Background	Research grade biosimilar. Not for use in therapeutic or diagnostic procedures for humans or animals.
Usage	Research use only

Anti-TREM2(AL002 biosimilar) mAb ELISA

0.2 µg of Human TREM2, hFc tagged Protein per well

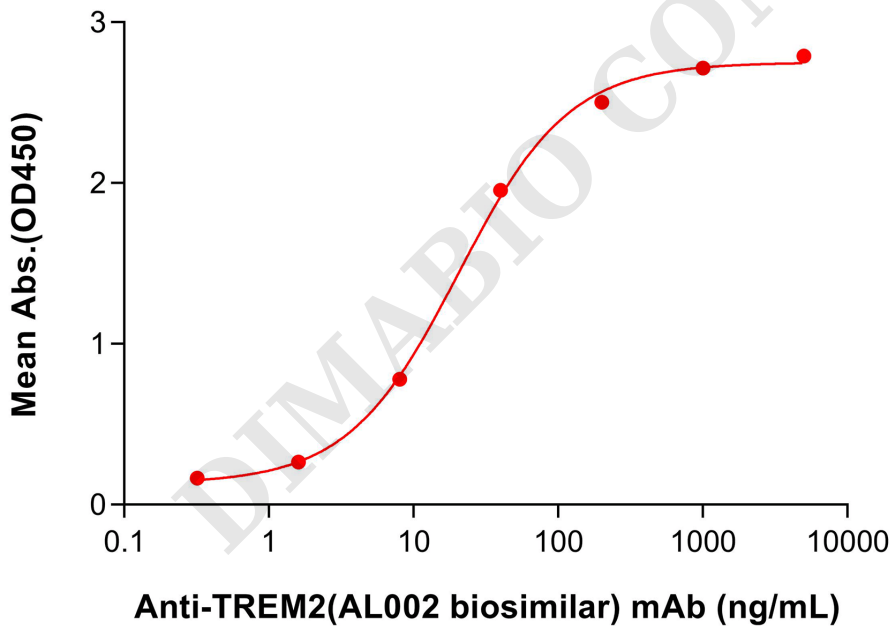


Figure 1. ELISA plate pre-coated by 2µg/mL (100 µL/well) Human TREM2 Protein, hFc Tag (PME100633) can bind Anti-TREM2(AL002 biosimilar) mAb (BME100294) in a linear range of 8-40 ng/mL. In order to specifically detect BME100294, mouse anti-human Fab-specific antibody was used as detection antibody.



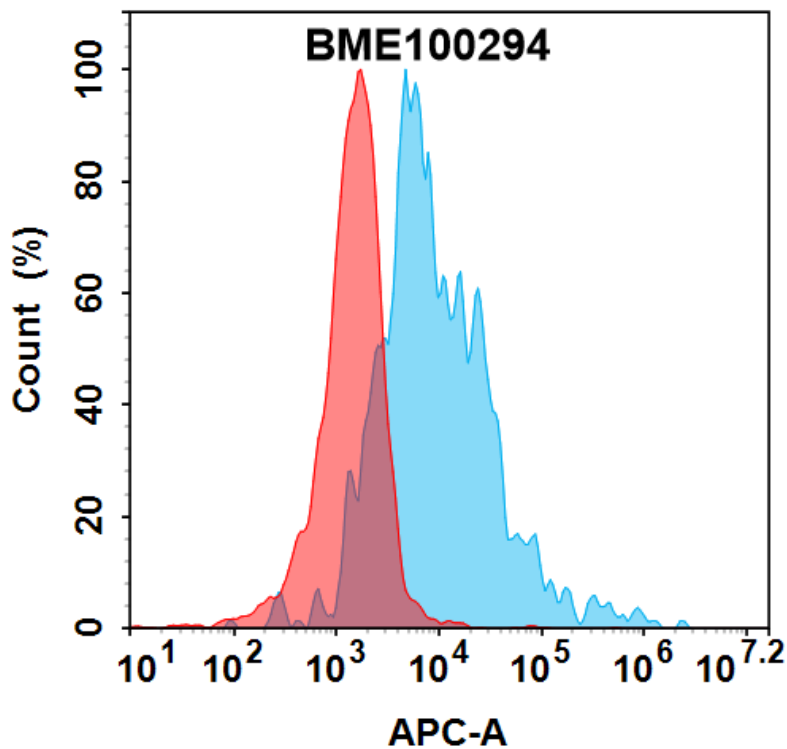


Figure 2. Flow cytometry analysis with 7.5µg/ml Anti-TREM2(AL002 biosimilar) mAb (BME100294) on HEK293 cells transfected with Human TREM2 protein (Blue histogram) or HEK293 transfected with irrelevant protein (Red histogram).

DIMABIO CONFIDENTIAL

