

PRODUCT INFORMATION

Common Name	Warning: Undefined variable \$hasAttributeValueDescription in C:\wwwroot\mirror.dimabio.com\wp-content\plugins\woocommerce-print-products\publicclass-woocommerce-print-products-public.php on line 2806 AMG 157, AMG-157, MEDI-9929, MEDI9929, anti-TSLP-Receptor (TSLP-R; Crf2), tezepelumab-ekko
Synonyms	Warning: Undefined variable \$hasAttributeValueDescription in C:\wwwroot\mirror.dimabio.com\wp-content\plugins\woocommerce-print-products\publicclass-woocommerce-print-products-public.php on line 2806 Thymic stromal lymphopoietin
Conjugate	Unconjugated
Applications	ELISA; Flow Cyt
Recommended Dilutions	ELISA 1:5000-10000; Flow Cyt 1:100
Formulation & Reconstitution	Lyophilized from sterile PBS, pH 7.4. Normally 5 % - 8% trehalose is added as protectants before lyophilization. Please see Certificate of Analysis for specific instructions of reconstitution.
Host Species	Homo sapiens
IgG type	Human IgG2 - Kappa
Reactivity	Human
Target	TSLP
Uniprot ID	Q969D9
Description	Anti-TSLP(tezepelumab biosimilar) mAb
Delivery	In Stock
Yefei_Storage	Store at -20°C to -80°C for 12 months in lyophilized form. After reconstitution, if not intended for use within a month, aliquot and store at -80°C (Avoid repeated freezing and thawing). Lyophilized proteins are shipped at ambient temperature.
Background	Research grade biosimilar. Not for use in therapeutic or diagnostic procedures for humans or animals.
Usage	Research use only

Anti-TSLP (tezepelumab biosimilar) mAb ELISA

0.5 µg of Human TSLP, hFc tagged protein per well

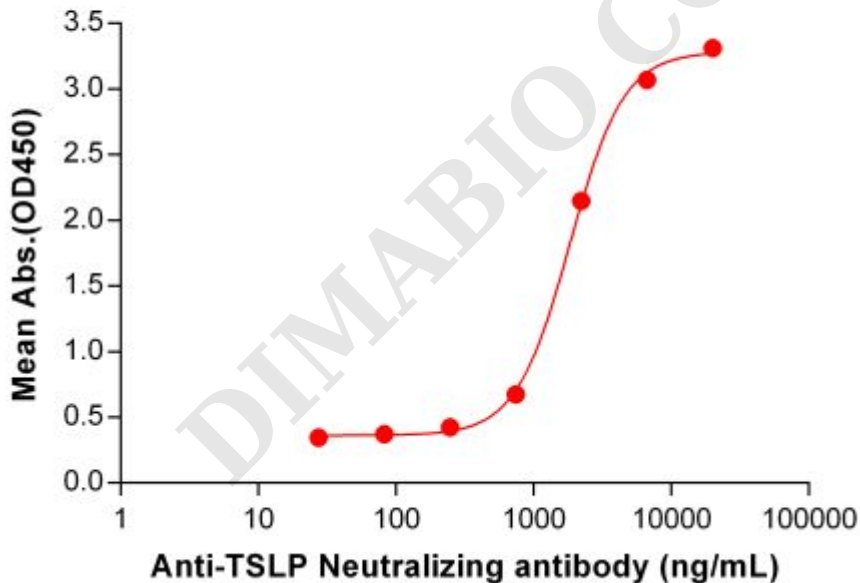


Figure 1. ELISA plate pre-coated by 5 µg/mL (100 µL/well) Human TSLP Protein, hFc Tag (PME100637) can bind Anti-TSLP Neutralizing antibody (BME100112) in a linear range of 741–6667 ng/mL. In order to specifically detect BME100112, mouse anti-human Fab-specific antibody was used as detection antibody.



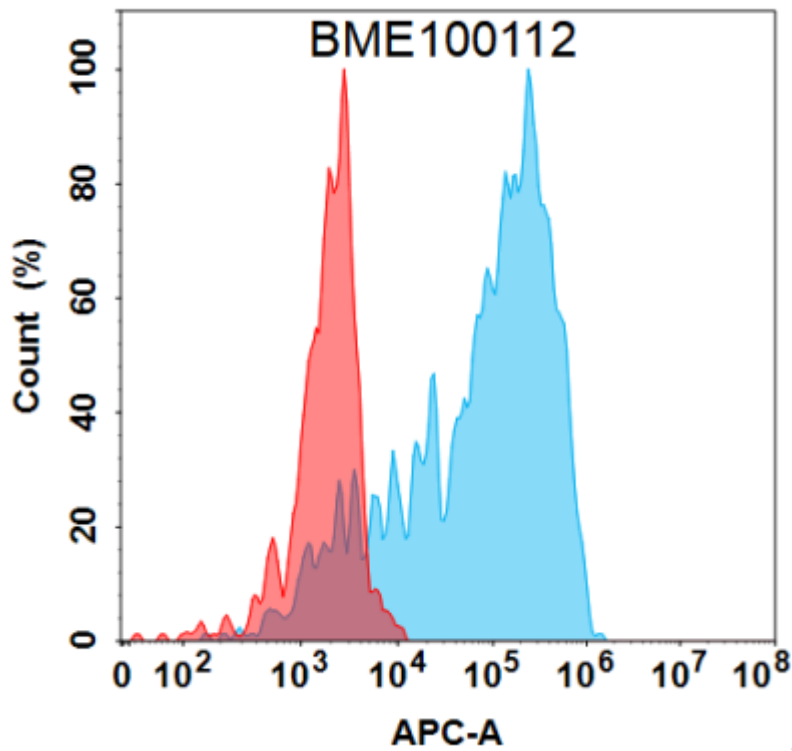


Figure 2. Flow cytometry analysis under cell membrane permeable condition with 1 $\mu\text{g}/\text{mL}$ Anti-TSLP (tezepelumab biosimilar) mAb (BME100112) on HEK293 cells transfected with Human TSLP protein (Blue histogram) or HEK293 transfected with irrelevant protein (Red histogram).

DIMABIO CONFIDENTIAL

