

PRODUCT INFORMATION

Common Name	1121B, IMC-1121B, LY3009806
Synonyms	CD309;FLK1;VEGFR;VEGFR2
Applications	ELISA; Flow Cyt
Recommended Dilutions	ELISA 1:5000-10000; Flow Cyt 1:100
Formulation & Reconstitution	Lyophilized from sterile PBS, pH 7.4. Normally 5% - 8% trehalose is added as protectants before lyophilization. Please see Certificate of Analysis for specific instructions of reconstitution.
Host Species	Homo sapiens
IgG type	IgG1
Reactivity	Human
Target	VEGFR2
Uniprot ID	P35968
Description	Anti-VEGFR2 (ramucirumab biosimilar)mAb
Delivery	In Stock
Storage & Shipping	Store at -20°C to -80°C for 12 months in lyophilized form. After reconstitution, if not intended for use within a month, aliquot and store at -80°C (Avoid repeated freezing and thawing). Lyophilized proteins are shipped at ambient temperature.
Background	Research grade biosimilar. Not for use in therapeutic or diagnostic procedures for humans or animals.
Usage	Research use only
Conjugate	Unconjugated
DIMA Disclaimer	All DIMA recombinant antibodies are genuinely generated by DIMA Biotech. They are all under patent application. Any protein sequencing or reverse engineering attempt is prohibited. We are actively scrutinizing all patent application to ensure no IP infringement.



Anti-VEGFR2 (ramucirumab biosimilar)mAb ELISA

0.5 μ g of Human VEGFR2, His tagged protein per well

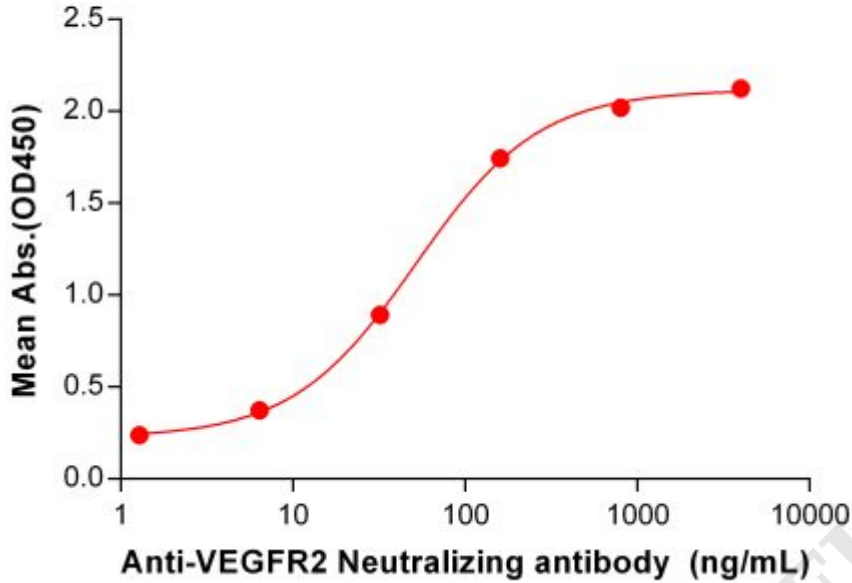


Figure 1. ELISA plate pre-coated by 5 μ g/mL (100 μ L/well) Human VEGFR2 protein, His Tag ([getskuurl sku="PME100104"]) can bind Anti-VEGFR2 Neutralizing antibody (BME100060) in a linear range of 6.4-800 ng/mL.

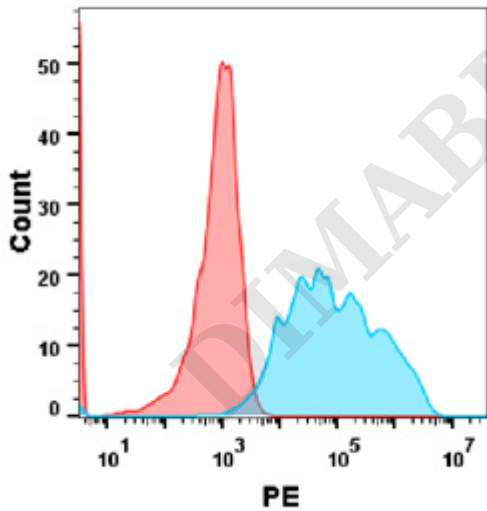


Figure 2. Flow cytometry analysis with Anti-VEGFR2 mAb 1 μ g/ml (ramucirumab) on Expi293 cells transfected with human VEGFR2 (Blue histogram) or Expi293 transfected with irrelevant protein (Red histogram) .

