

## PRODUCT INFORMATION

<b>Tag</b>	<b>Warning:</b> Undefined variable \$hasAttributeValueDescription in C:\wwwroot\mirror\dimabio.com\wp-content\plugins\woocommerce-print-products\publicclass-woocommerce-print-products-public.php on line 2806 C-Flag&Avi Tag
<b>Target</b>	CLDN2
<b>Synonyms</b>	OAZON; claudin-2
<b>Description</b>	Biotinylated Human CLDN2 full length protein-synthetic nanodisc
<b>Delivery</b>	In Stock
<b>Uniprot ID</b>	Q8NHS1
<b>Expression Host</b>	HEK293
<b>Protein Families</b>	Transmembrane
<b>Protein Pathways</b>	Cell adhesion molecules (CAMs), Leukocyte transendothelial migration, Tight junction
<b>Molecular Weight</b>	The human full length CLDN2 Protein has a MW of 29.3 kDa.
<b>Formulation &amp; Reconstitution</b>	Lyophilized from nanodisc solubilization buffer (20 mM Tris-HCl, 150 mM NaCl, pH 8.0). Normally 5% - 8% trehalose is added as protectants before lyophilization. Please see Certificate of Analysis for specific instructions of reconstitution.
<b>Yefei_Storage</b>	Store at -20°C to -80°C for 12 months in lyophilized form. After reconstitution, if not intended for use within a month, aliquot and store at -80°C (Avoid repeated freezing and thawing). Lyophilized proteins are shipped at ambient temperature.
<b>Background</b>	This gene product belongs to the claudin protein family whose members have been identified as major integral membrane proteins localized exclusively at tight junctions. Claudins are expressed in an organ-specific manner and regulate tissue-specific physiologic properties of tight junctions. This protein is expressed in the intestine. Alternatively spliced transcript variants with different 5' untranslated region have been found for this gene.[provided by RefSeq, Jan 2010]
<b>Usage</b>	Research use only
<b>Conjugate</b>	Biotinylated

## Biotinylated Human CLDN2 full length protein-synthetic nanodisc ELISA

0.2 µg of Biotinylated Human CLDN2-Nanodisc, Flag Tag per well

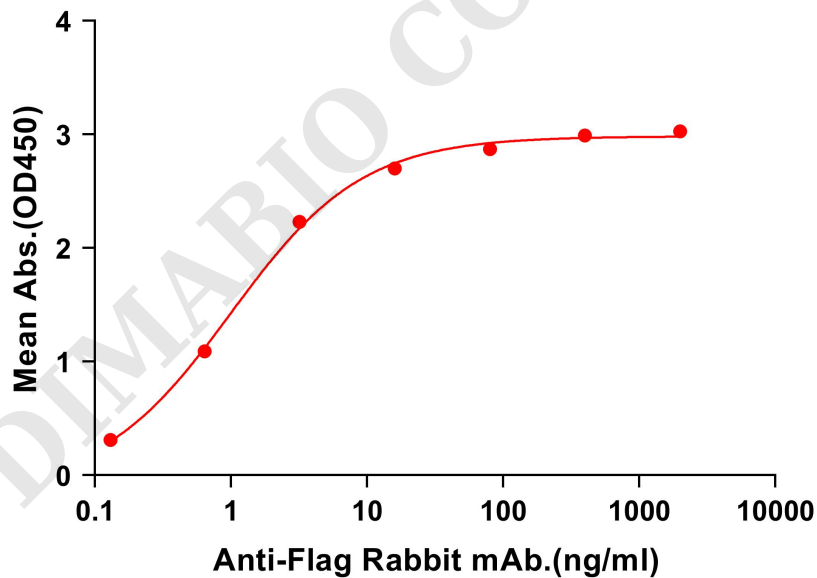
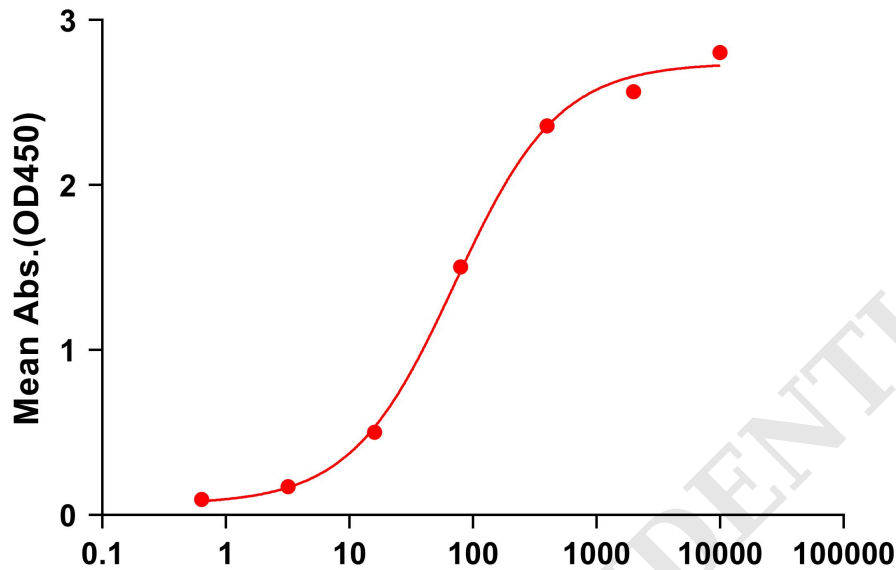


Figure 1. ELISA plate pre-coated by 2 µg/mL (100 µL/well) Biotinylated Human CLDN2 full length protein-synthetic nanodisc (FLP100082B) can bind Anti-Flag Rabbit mAb in a linear range of 0.13-16 ng/mL.



## Biotinylated Human CLDN2 full length protein-synthetic nanodisc ELISA

0.1  $\mu\text{g}$  of Streptavidin per well

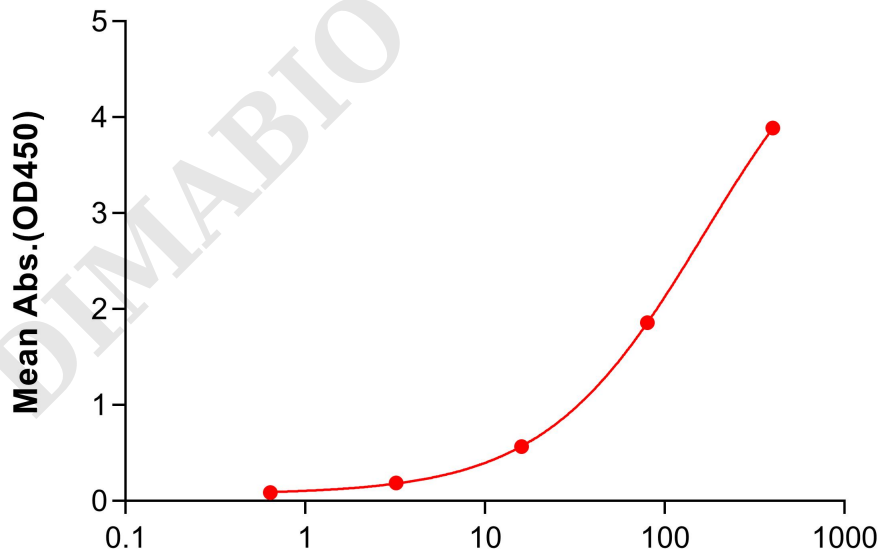


Biotinylated Human CLDN2 full length protein-synthetic nanodisc.(ng/ml)

Figure 2. ELISA plate pre-coated by 1  $\mu\text{g}/\text{mL}$  (100  $\mu\text{L}/\text{well}$ ) Streptavidin can bind Biotinylated Human CLDN2 full length protein-synthetic nanodisc (FLP100082B) in a linear range of 16-400 ng/mL. In order to specifically detect FLP100082B, Anti-Flag Rabbit antibody was used as detection antibody.

## Biotinylated Human CLDN2 full length protein-synthetic nanodisc ELISA

0.2  $\mu\text{g}$  of Anti-Flag Rabbit mAb per well



Biotinylated Human CLDN2 full length protein-synthetic nanodisc.(ng/ml)

Figure 3. ELISA plate pre-coated by 2  $\mu\text{g}/\text{mL}$  (100  $\mu\text{L}/\text{well}$ ) Anti-flag Rabbit mAb can bind Biotinylated Human CLDN2 full length protein-synthetic nanodisc (FLP100082B) in a linear range of 16-400 ng/mL. In order to specifically detect FLP100082B, HRP Conjugated Streptavidin was used as detection antibody.



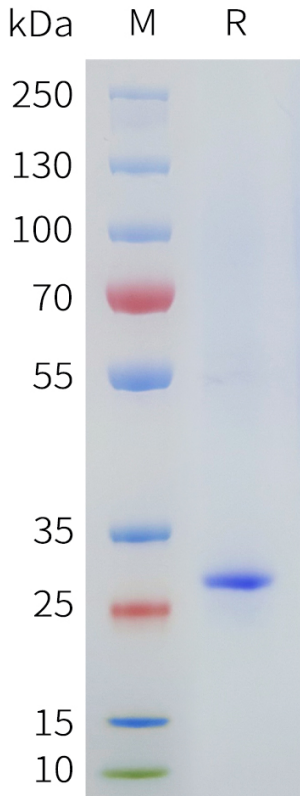


Figure 4. Biotinylated Human CLDN2-Nanodisc, Flag Tag on SDS-PAGE

DIMABIO CONFIDENTIAL

