

**PRODUCT INFORMATION**

<b>Target</b>	CLEC4C
<b>Synonyms</b>	BDCA-2;BDCA2;CD303;CLECSF7;CLECSF11;DLEC;HECL;PRO34150
<b>Description</b>	Recombinant Cynomolgus CLEC4C protein with N-terminal 6×His tag
<b>Delivery</b>	In Stock
<b>Uniprot ID</b>	A0A2K5UWP4
<b>Expression Host</b>	HEK293
<b>Tag</b>	N-6×His Tag
<b>Molecular Characterization</b>	6×His tag CLEC4C(Tyr48-Ile212)
<b>Molecular Weight</b>	The protein has a predicted molecular mass of 20.3 kDa after removal of the signal peptide. The apparent molecular mass of His-cCLEC4C is approximately 15-25 kDa due to glycosylation.
<b>Purity</b>	The purity of the protein is greater than 85% as determined by SDS-PAGE and Coomassie blue staining.
<b>Formulation &amp; Reconstitution</b>	Lyophilized from sterile PBS, pH 7.4. Normally 5 % - 8% trehalose is added as protectants before lyophilization. Please see Certificate of Analysis for specific instructions of reconstitution.
<b>Storage &amp; Shipping</b>	Store at -20°C to -80°C for 12 months in lyophilized form. After reconstitution, if not intended for use within a month, aliquot and store at -80°C (Avoid repeated freezing and thawing). Lyophilized proteins are shipped at ambient temperature.
<b>Background</b>	This gene encodes a member of the C-type lectin/C-type lectin-like domain (CTL/CTLD) superfamily. Members of this family share a common protein fold and have diverse functions, such as cell adhesion, cell-cell signalling, glycoprotein turnover, and roles in inflammation and immune response. The encoded type 2 transmembrane protein may play a role in dendritic cell function. Two transcript variants encoding distinct isoforms have been identified for this gene. [provided by RefSeq, Jul 2008]
<b>Usage</b>	Research use only
<b>Conjugate</b>	Unconjugated



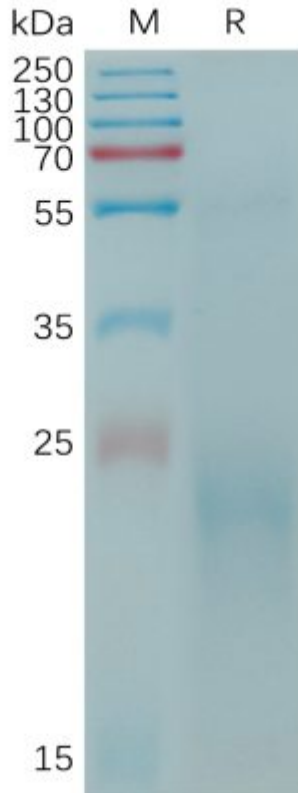


Figure 1. Cynomolgus CLEC4C Protein, His Tag on SDS-PAGE under reducing condition.

DIMABIO CONFIDENTIAL

