

**PRODUCT INFORMATION**

<b>Target</b>	EGFR
<b>Synonyms</b>	ERBB; ERRP; HER1; mENA; ERBB1; PIG61; NISBD2
<b>Description</b>	Recombinant Cynomolgus EGFR protein with C-terminal 10×His tag
<b>Delivery</b>	In Stock
<b>Uniprot ID</b>	A0A2K5WK39
<b>Expression Host</b>	HEK293
<b>Tag</b>	C-10×His tag
<b>Molecular Characterization</b>	EGFR(Leu25-Ser645) 10×His tag
<b>Molecular Weight</b>	The protein has a predicted molecular mass of 70.0 kDa after removal of the signal peptide. The apparent molecular mass of cEGFR-His is approximately 70-130 kDa due to glycosylation.
<b>Purity</b>	The purity of the protein is greater than 85% as determined by SDS-PAGE and Coomassie blue staining.
<b>Formulation &amp; Reconstitution</b>	Lyophilized from sterile PBS, pH 7.4. Normally 5 % - 8% trehalose is added as protectants before lyophilization. Please see Certificate of Analysis for specific instructions.
<b>Storage &amp; Shipping</b>	Store at -20°C to -80°C for 12 months in lyophilized form. After reconstitution, if not intended for use within a month, aliquot and store at -80°C (Avoid repeated freezing and thawing). Lyophilized proteins are shipped at ambient temperature.
<b>Background</b>	The protein encoded by this gene is a transmembrane glycoprotein that is a member of the protein kinase superfamily. This protein is a receptor for members of the epidermal growth factor family. EGFR is a cell surface protein that binds to epidermal growth factor, thus inducing receptor dimerization and tyrosine autophosphorylation leading to cell proliferation. Mutations in this gene are associated with lung cancer. EGFR is a component of the cytokine storm which contributes to a severe form of Coronavirus Disease 2019 (COVID-19) resulting from infection with severe acute respiratory syndrome coronavirus-2 (SARS-CoV-2). [provided by RefSeq, Jul 2020]
<b>Usage</b>	Research use only
<b>Conjugate</b>	Unconjugated



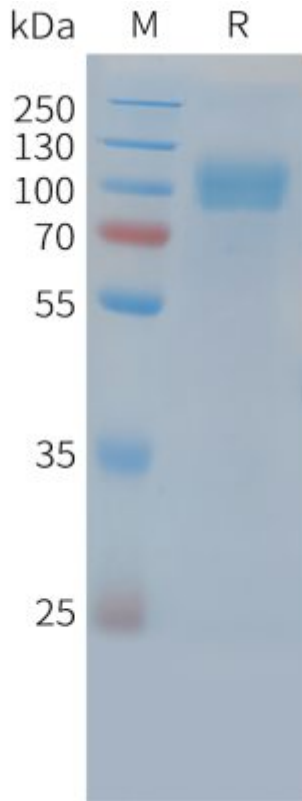


Figure 1. Cynomolgus EGFR Protein, His Tag on SDS-PAGE under reducing condition.

DIMABIO CONFIDENTIAL

