

**PRODUCT INFORMATION**

|   |  |
|---|--|
| <b>Target</b>                           | LAG3   |
| <b>Synonyms</b>                         | LAG-3; CD223   |
| <b>Description</b>                      | Recombinant Cynomolgus LAG3 protein with C-terminal human Fc tag   |
| <b>Delivery</b>                         | In Stock   |
| <b>Uniprot ID</b>                       | XP_045220579.1   |
| <b>Expression Host</b>                  | HEK293   |
| <b>Tag</b>                              | C-Human Fc tag   |
| <b>Molecular Characterization</b>       | LAG3(Ala18-His449) hFc(Glu99-Ala330)   |
| <b>Molecular Weight</b>                 | The protein has a predicted molecular mass of 72.7 kDa after removal of the signal peptide.  |
| <b>Purity</b>                           | The purity of the protein is greater than 90% as determined by SDS-PAGE and Coomassie blue staining.   |
| <b>Formulation &amp; Reconstitution</b> | Lyophilized from sterile PBS, pH 7.4. Normally 5% - 8% trehalose is added as protectants before lyophilization. Please see Certificate of Analysis for specific instructions of reconstitution.  |
| <b>Yefei_Storage</b>                    | Store at -20°C to -80°C for 12 months in lyophilized form. After reconstitution, if not intended for use within a month, aliquot and store at -80°C (Avoid repeated freezing and thawing). Lyophilized proteins are shipped at ambient temperature.  |
| <b>Background</b>                       | Lymphocyte-activation protein 3 belongs to Ig superfamily and contains 4 extracellular Ig-like domains. The LAG3 gene contains 8 exons. The sequence data, exon/intron organization, and chromosomal localization all indicate a close relationship of LAG3 to CD4. [provided by RefSeq, Jul 2008] |
| <b>Usage</b>                            | Research use only  |
| <b>Conjugate</b>                        | Unconjugated   |



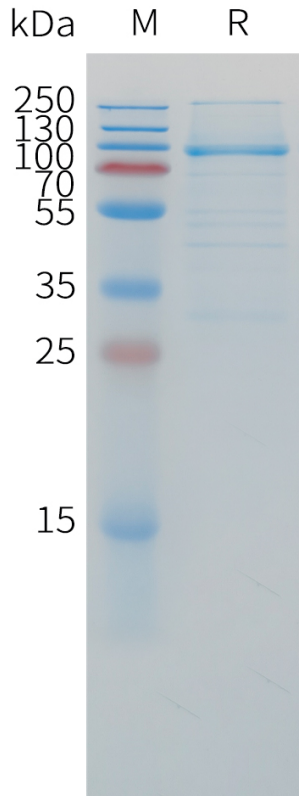


Figure 1. Cynomolgus LAG3 Protein, hFc Tag on SDS-PAGE under reducing condition.

DIMABIO CONFIDENTIAL

