

PRODUCT INFORMATION

| | |
|-----------------------------------------|---------------------------------------------------------------------------------------------------------------------------------------------------------------------------------------------------------------------------------------------------------------------------------------------------------------------------------------------------------------------------------------------------------------------------------------------------------------------------------------------------------------------------------------------------------------------------------------------------------------------------------------------------------------------------------------------------------------------------------------|
| Target | TIM3 |
| Synonyms | HAVCR2; CD366; KIM-3; SPTCL; TIMD3; Tim-3; TIMD-3; HAVcr-2 |
| Description | Recombinant Cynomolgus TIM3 protein with C-terminal human Fc tag |
| Delivery | In Stock |
| Uniprot ID | A0A2K5U3G7 |
| Expression Host | HEK293 |
| Tag | C-Human Fc tag |
| Molecular Characterization | TIM3(Ser22-Thr194) hFc(Glu99-Ala330) |
| Molecular Weight | The protein has a predicted molecular mass of 45.0 kDa after removal of the signal peptide. |
| Purity | The purity of the protein is greater than 95% as determined by SDS-PAGE and Coomassie blue staining. |
| Formulation & Reconstitution | Lyophilized from sterile PBS, pH 7.4. Normally 5% - 8% trehalose is added as protectants before lyophilization. Please see Certificate of Analysis for specific instructions of reconstitution. |
| Storage & Shipping | Store at -20°C to -80°C for 12 months in lyophilized form. After reconstitution, if not intended for use within a month, aliquot and store at -80°C (Avoid repeated freezing and thawing). Lyophilized proteins are shipped at ambient temperature. |
| Background | The protein encoded by this gene belongs to the immunoglobulin superfamily, and TIM family of proteins. CD4-positive T helper lymphocytes can be divided into types 1 (Th1) and 2 (Th2) on the basis of their cytokine secretion patterns. Th1 cells are involved in cell-mediated immunity to intracellular pathogens and delayed-type hypersensitivity reactions, whereas, Th2 cells are involved in the control of extracellular helminthic infections and the promotion of atopic and allergic diseases. This protein is a Th1-specific cell surface protein that regulates macrophage activation, and inhibits Th1-mediated auto- and alloimmune responses, and promotes immunological tolerance. [provided by RefSeq, Sep 2011] |
| Usage | Research use only |
| Conjugate | Unconjugated |



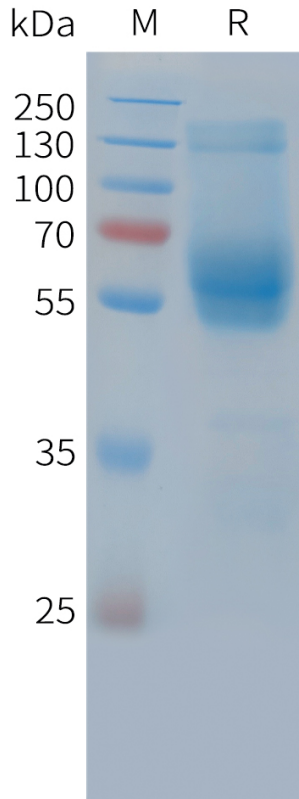


Figure 1. Cynomolgus TIM3 Protein, hFc Tag on SDS-PAGE under reducing condition.

DIMABIO CONFIDENTIAL

