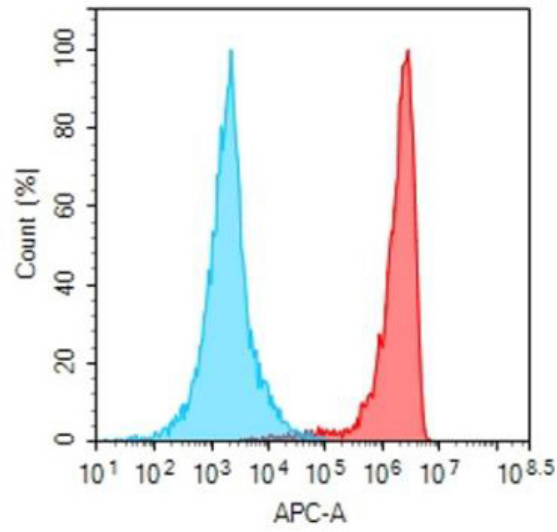


PRODUCT INFORMATION

Target	5T4
Description	Monoclonal Cell Line Derived from K562 Cells, Engineered for Stable Expression of Human 5T4 Using Lentiviral Technology
Host Cells	K562
Uniprot ID	Q13641
Applications	FACS Data
Growth media	RPMI-1640+10% FBS+1% P.S+2 ug/mL Puromycin
Package	5E6 Cells/mL
Host Species	Human
Suggested Control	SKU: BME100158
Warranty and Disclaimer	1. Please inspect cells upon receipt and report any issues promptly. 2. We offer one-time replacements for issues reported within a week of receipt. 3. User-induced issues are not eligible for free replacements. 4. We do not accept liability for damages resulting from cell use, storage, or loss. 5. Feedback received more than one month after receipt will not be processed.
Storage & Shipping	Cells are shipped using dry ice and require liquid nitrogen storage for long term preservation.
Synonyms	5T4;5T4AG;M6P1;WAIF1
Background	This gene encodes a leucine-rich transmembrane glycoprotein that may be involved in cell adhesion. The encoded protein is an oncofetal antigen that is specific to trophoblast cells. In adults this protein is highly expressed in many tumor cells and is associated with poor clinical outcome in numerous cancers. Alternate splicing in the 5' UTR results in multiple transcript variants that encode the same protein.
Usage	For research use only.



Hu_5T4 K562 Cell Line





-  Human IgG
-  Anti-5T4 (GEN-1044 biosimilar) mAb (SKU: BME100158)

Figure 1. Flow cytometry analysis of human 5T4 overexpression using Hu_5T4 K562 Cell Line (Cat. No. CEL100003) and Anti-5T4 (GEN-1044 biosimilar) mAb (Cat. No. BME100158)

DIMABIO CONFIDENTIAL

