

PRODUCT INFORMATION

Target	CCR5
Description	Monoclonal Cell Line Derived from K562 Cells, Engineered for Stable Expression of Human CCR5 Using Lentiviral Technology
Host Cells	K562
Uniprot ID	P51681
Applications	FACS Data
Growth media	RPMI-1640+10% FBS+1% P.S+1% Gln+2 ug/mL Puromycin
Package	5E6 Cells/mL
Host Species	Human
Suggested Control	SKU: BME100204
Warranty and Disclaimer	1. Please inspect cells upon receipt and report any issues promptly. 2. We offer one-time replacements for issues reported within a week of receipt. 3. User-induced issues are not eligible for free replacements. 4. We do not accept liability for damages resulting from cell use, storage, or loss. 5. Feedback received more than one month after receipt will not be processed.
Yefei_Storage	Cells are shipped using dry ice and require liquid nitrogen storage for long term preservation.
Synonyms	CC-CKR-5;CCCKR5;CCR-5;CD195;CKR-5;CKR5;CMKBR5;IDDM22
Background	This gene encodes a member of the beta chemokine receptor family, which is predicted to be a seven transmembrane protein similar to G protein-coupled receptors. This protein is expressed by T cells and macrophages, and is known to be an important co-receptor for macrophage-tropic virus, including HIV, to enter host cells. Defective alleles of this gene have been associated with the HIV infection resistance. The ligands of this receptor include monocyte chemoattractant protein 2 (MCP-2), macrophage inflammatory protein 1 alpha (MIP-1 alpha), macrophage inflammatory protein 1 beta (MIP-1 beta) and regulated on activation normal T expressed and secreted protein (RANTES). Expression of this gene was also detected in a promyeloblastic cell line, suggesting that this protein may play a role in granulocyte lineage proliferation and differentiation. This gene is located at the chemokine receptor gene cluster region. An allelic polymorphism in this gene results in both functional and non-functional alleles; the reference genome represents the functional allele. Two transcript variants encoding the same protein have been found for this gene. [provided by RefSeq, Jul 2015]
Usage	For research use only.



Hu_CCR5 K562 Cell Line

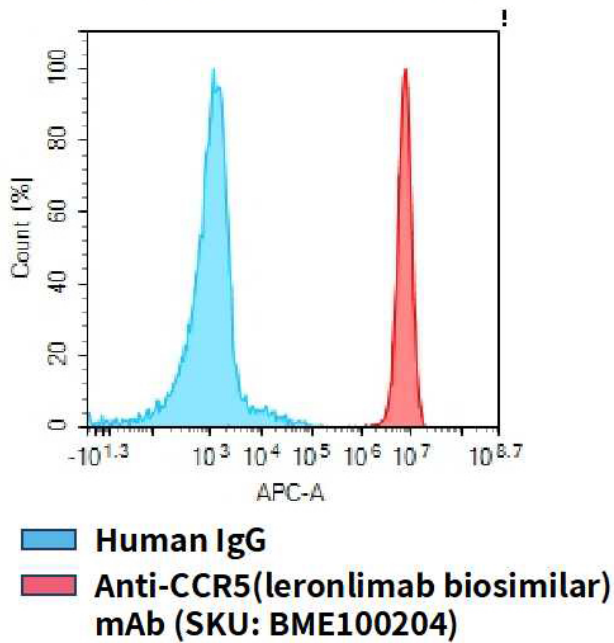


Figure 1. Flow cytometry analysis of human CCR5 overexpression using Hu_CCR5 K562 Cell Line (Cat. No. CEL100090) and Anti-CCR5(leronlimab biosimilar) mAb (Cat. No. BME100204)

DIMABIO CONFIDENTIAL

