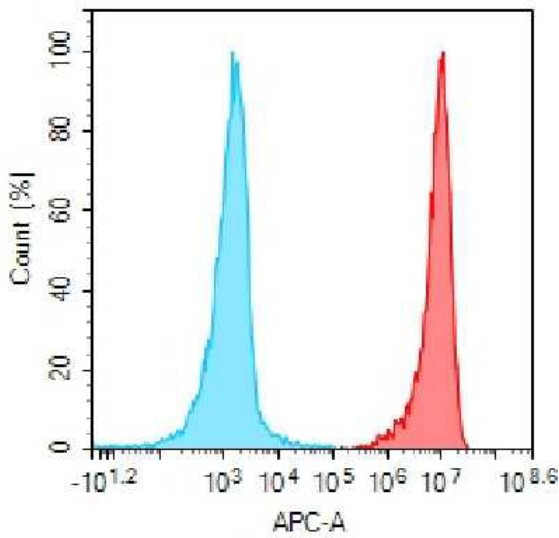


PRODUCT INFORMATION

Target	CD25
Description	Monoclonal Cell Line Derived from K562 Cells, Engineered for Stable Expression of Human CD25 Using Lentiviral Technology
Host Cells	K562
Uniprot ID	P01589
Applications	FACS Data
Growth media	RPMI-1640+10% FBS+1% P.S+1% Gln+2 ug/mL Puromycin
Package	5E6 Cells/mL
Host Species	Human
Suggested Control	SKU: BME100043
Warranty and Disclaimer	1. Please inspect cells upon receipt and report any issues promptly. 2. We offer one-time replacements for issues reported within a week of receipt. 3. User-induced issues are not eligible for free replacements. 4. We do not accept liability for damages resulting from cell use, storage, or loss. 5. Feedback received more than one month after receipt will not be processed.
Yefei_Storage	Cells are shipped using dry ice and require liquid nitrogen storage for long term preservation.
Synonyms	IL2RA;CD25;p55;IL2-RA;IL-2-RA
Background	The interleukin 2 (IL2) receptor alpha (IL2RA) and beta (IL2RB) chains; together with the common gamma chain (IL2RG); constitute the high-affinity IL2 receptor. Homodimeric alpha chains (IL2RA) result in low-affinity receptor; while homodimeric beta (IL2RB) chains produce a medium-affinity receptor. Normally an integral-membrane protein; soluble IL2RA has been isolated and determined to result from extracellular proteolysis. Alternately-spliced IL2RA mRNAs have been isolated; but the significance of each is presently unknown. Mutations in this gene are associated with interleukin 2 receptor alpha deficiency.
Usage	For research use only.



Hu_CD25 K562 Cell Line



- Human IgG**
- Anti-IL2RA (basiliximab biosimilar) mAb (SKU: BME100043)**

Figure 1. Flow cytometry analysis of human CD25 overexpression using Hu_CD25 K562 Cell Line (Cat. No. CEL100020) and Anti-IL2RA (basiliximab biosimilar) mAb (Cat. No. BME100043)

DIMABIO CONFIDENTIAL

