

PRODUCT INFORMATION

Target	CD28
Description	Monoclonal Cell Line Derived from K562 Cells, Engineered for Stable Expression of Human CD28 Using Lentiviral Technology
Host Cells	K562
Uniprot ID	P10747
Applications	FACS Data
Growth media	RPMI-1640+10% FBS+1% P.S+1% Gln+2 ug/mL Puromycin
Package	5E6 Cells/mL
Host Species	Human
Suggested Control	SKU: DME100063 1. Please inspect cells upon receipt and report any issues promptly. 2. We offer one-time replacements for issues reported within a week of receipt. 3. User-induced issues are not eligible for free replacements. 4. We do not accept liability for damages resulting from cell use, storage, or loss. 5. Feedback received more than one month after receipt will not be processed.
Warranty and Disclaimer	
Yefei_Storage	Cells are shipped using dry ice and require liquid nitrogen storage for long term preservation.
Synonyms	CD28; Tp44
Background	The protein encoded by this gene is essential for T-cell proliferation and survival; cytokine production; and T-helper type-2 development. Several alternatively spliced transcript variants encoding different isoforms have been found for this gene.
Usage	For research use only.



Hu_CD28 K562 Cell Line

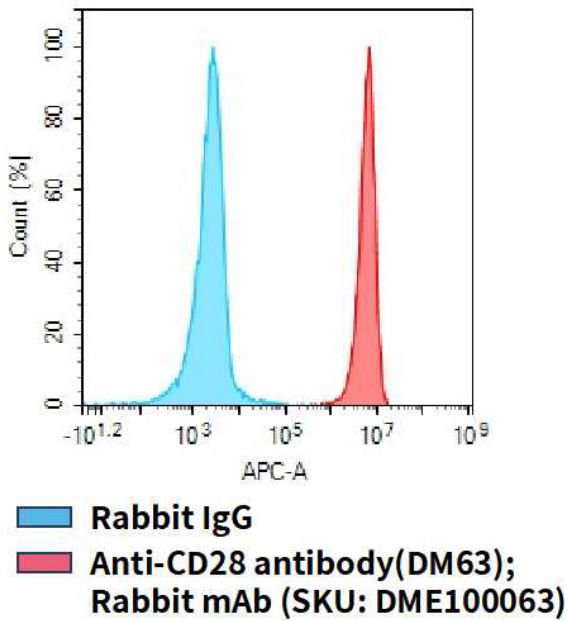


Figure 1. Flow cytometry analysis of human CD28 overexpression using Hu_CD28 K562 Cell Line (Cat. No. CEL100041) and Anti-CD28 antibody(DM63)Rabbit mAb (Cat. No. DME100063)

