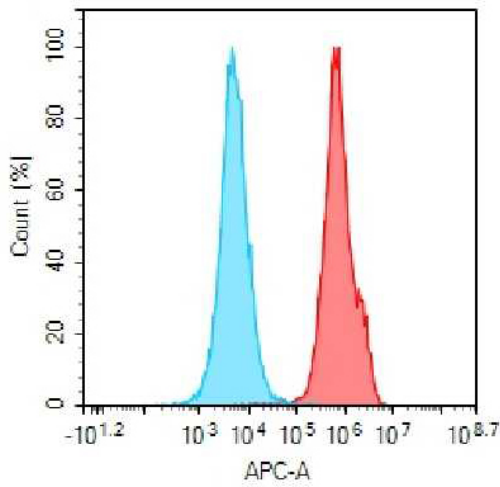


**PRODUCT INFORMATION**

<b>Target</b>	CDH6
<b>Description</b>	Monoclonal Cell Line Derived from CHO-S Cells, Engineered for Stable Expression of Human CDH6 Using Lentiviral Technology
<b>Host Cells</b>	CHO-S
<b>Uniprot ID</b>	P55285
<b>Applications</b>	FACS Data
<b>Growth media</b>	DMEM+10% FBS+1% P.S+Gln+2 ug/mL Puromycin
<b>Package</b>	5E6 Cells/mL
<b>Host Species</b>	Human
<b>Suggested Control</b>	SKU: BME100232
<b>Warranty and Disclaimer</b>	1. Please inspect cells upon receipt and report any issues promptly. 2. We offer one-time replacements for issues reported within a week of receipt. 3. User-induced issues are not eligible for free replacements. 4. We do not accept liability for damages resulting from cell use, storage, or loss. 5. Feedback received more than one month after receipt will not be processed.
<b>Yefei_Storage</b>	Cells are shipped using dry ice and require liquid nitrogen storage for long term preservation.
<b>Synonyms</b>	CDH6; K-cadherin
<b>Background</b>	This gene encodes a member of the cadherin superfamily. Cadherins are membrane glycoproteins that mediate homophilic cell-cell adhesion and play critical roles in cell differentiation and morphogenesis. The encoded protein is a type II cadherin and may play a role in kidney development as well as endometrium and placenta formation. Decreased expression of this gene may be associated with tumor growth and metastasis. [provided by RefSeq; May 2011]
<b>Usage</b>	For research use only.



## Hu\_CDH6 CHO-S Cell Line



-  Human IgG
-  Anti-CDH6(raludotatug biosimilar) mAb (SKU: BME100232)

Figure 1. Flow cytometry analysis of human CDH6 overexpression using Hu\_CDH6 CHO-S Cell Line (Cat. No. CEL100055) and Anti-CDH6(raludotatug biosimilar) mAb (Cat. No. BME100232)

DIMABIO CONFIDENTIAL

