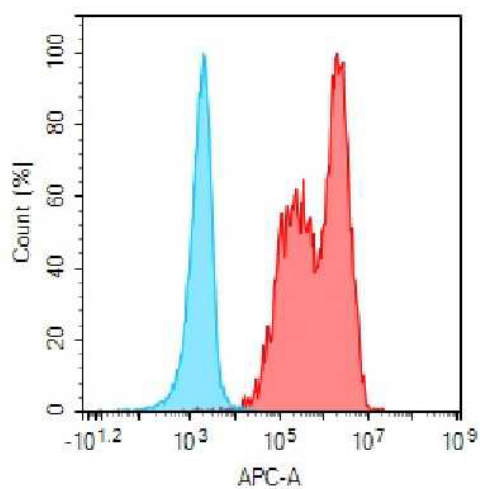


PRODUCT INFORMATION

Target	ROR2
Description	Monoclonal Cell Line Derived from CHO-S Cells, Engineered for Stable Expression of Human ROR2 Using Lentiviral Technology
Host Cells	CHO-S
Uniprot ID	Q01974
Applications	FACS Data
Growth media	DMEM+10% FBS+1% P.S+Gln+2 ug/mL Puromycin
Package	5E6 Cells/mL
Host Species	Human
Suggested Control	SKU: BME100169
Warranty and Disclaimer	1. Please inspect cells upon receipt and report any issues promptly. 2. We offer one-time replacements for issues reported within a week of receipt. 3. User-induced issues are not eligible for free replacements. 4. We do not accept liability for damages resulting from cell use, storage, or loss. 5. Feedback received more than one month after receipt will not be processed.
Yefei_Storage	Cells are shipped using dry ice and require liquid nitrogen storage for long term preservation.
Synonyms	ROR2;NTRKR2
Background	The protein encoded by this gene is a receptor protein tyrosine kinase and type I transmembrane protein that belongs to the ROR subfamily of cell surface receptors. The protein may be involved in the early formation of the chondrocytes and may be required for cartilage and growth plate development. Mutations in this gene can cause brachydactyly type B; a skeletal disorder characterized by hypoplasia/aplasia of distal phalanges and nails. In addition; mutations in this gene can cause the autosomal recessive form of Robinow syndrome; which is characterized by skeletal dysplasia with generalized limb bone shortening; segmental defects of the spine; brachydactyly; and a dysmorphic facial appearance.
Usage	For research use only.



Hu_ROR2 CHO-S Cell Line



-  Human IgG
-  Anti-ROR2(ozuriftamab biosimilar) mAb (SKU: BME100169)

Figure 1. Flow cytometry analysis of human ROR2 overexpression using Hu_ROR2 CHO-S Cell Line (Cat. No. CEL100044) and Anti-ROR2(ozuriftamab biosimilar) mAb (Cat. No. BME100169)

DIMABIO CONFIDENTIAL

