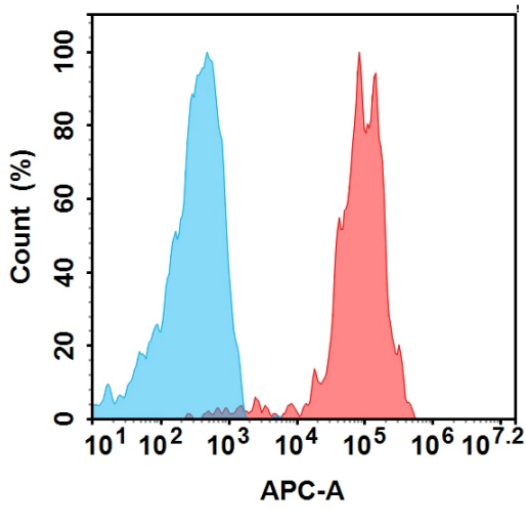


PRODUCT INFORMATION

Target	STEAP1
Description	Monoclonal Cell Line Derived from 293T Cells, Engineered for Stable Expression of Human STEAP1 Using Lentiviral Technology
Host Cells	293T
Uniprot ID	Q9UHE8
Applications	FACS Data
Growth media	DMEM+10% FBS+1% P.S+Gln+2 ug/mL Puromycin
Package	5E6 Cells/mL
Host Species	Human
Suggested Control	SKU: BME100208
Warranty and Disclaimer	1. Please inspect cells upon receipt and report any issues promptly. 2. We offer one-time replacements for issues reported within a week of receipt. 3. User-induced issues are not eligible for free replacements. 4. We do not accept liability for damages resulting from cell use, storage, or loss. 5. Feedback received more than one month after receipt will not be processed.
Yefei_Storage	Cells are shipped using dry ice and require liquid nitrogen storage for long term preservation.
Synonyms	STEAP; PRSS24
Background	This gene is predominantly expressed in prostate tissue, and is found to be upregulated in multiple cancer cell lines. The gene product is predicted to be a six-transmembrane protein, and was shown to be a cell surface antigen significantly expressed at cell-cell junctions. [provided by RefSeq, Jul 2008]
Usage	For research use only.



Hu_STEAP1 293T Cell Line





-  Human IgG
-  Anti-STEAP1(xaluritamig without CD3 biosimilar) mAb (SKU: BME100208)

Figure 1. Flow cytometry analysis of human STEAP1 overexpression using Hu_STEAP1 293T Cell Line (Cat. No. CEL100107) and Anti-STEAP1(xaluritamig without CD3 biosimilar) mAb (Cat. No. BME100208)

DIMABIO CONFIDENTIAL

