

## PRODUCT INFORMATION

<b>Target</b>	TGFBR2
<b>Description</b>	Monoclonal Cell Line Derived from K562 Cells, Engineered for Stable Expression of Human TGFBR2 Using Lentiviral Technology
<b>Host Cells</b>	K562
<b>Uniprot ID</b>	P37173
<b>Applications</b>	FACS Data
<b>Growth media</b>	RPMI-1640+10% FBS+1% P.S+1% Gln+2 ug/mL Puromycin
<b>Package</b>	5E6 Cells/mL
<b>Host Species</b>	Human
<b>Suggested Control</b>	SKU: DMC100467
<b>Warranty and Disclaimer</b>	1. Please inspect cells upon receipt and report any issues promptly. 2. We offer one-time replacements for issues reported within a week of receipt. 3. User-induced issues are not eligible for free replacements. 4. We do not accept liability for damages resulting from cell use, storage, or loss. 5. Feedback received more than one month after receipt will not be processed.
<b>Yefei_Storage</b>	Cells are shipped using dry ice and require liquid nitrogen storage for long term preservation.
<b>Synonyms</b>	AAT3; FAA3; LDS1B; LDS2; LDS2B; MFS2; RIIC; TAAD2; TBR-ii; TBRII; TGFbeta-RII; TGFR-2
<b>Background</b>	The protein encoded by this gene is a transmembrane protein that has a protein kinase domain; forms a heterodimeric complex with TGF-beta receptor type-1; and binds TGF-beta. This receptor:ligand complex phosphorylates proteins; which then enter the nucleus and regulate the transcription of genes related to cell proliferation; cell cycle arrest; wound healing; immunosuppression; and tumorigenesis. Mutations in this gene have been associated with Marfan Syndrome; Loeys-Deitz Aortic Aneurysm Syndrome; and the development of various types of tumors. Alternatively spliced transcript variants encoding different isoforms have been characterized. [provided by RefSeq; Aug 2017]
<b>Usage</b>	For research use only.



## Hu\_TGFBR2 K562 Cell Line

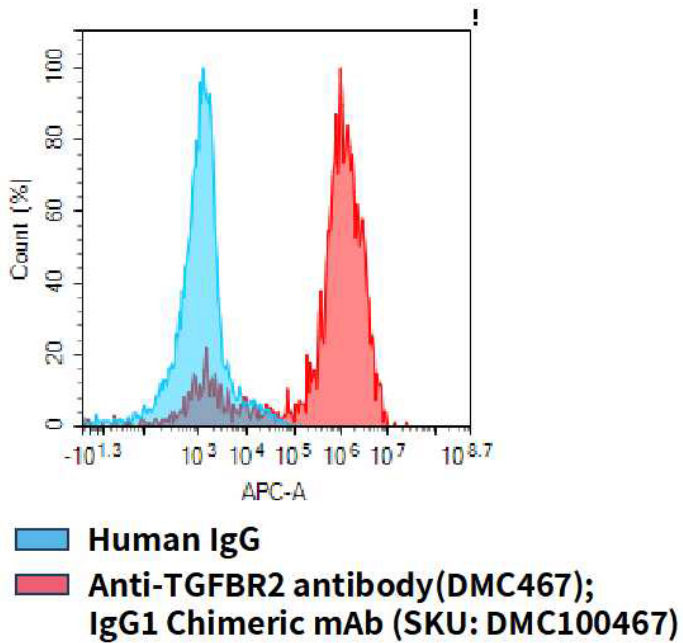


Figure 1. Flow cytometry analysis of human TGFBR2 overexpression using Hu\_TGFBR2 K562 Cell Line (Cat. No. CEL100050) and Anti-TGFBR2 antibody(DMC467)IgG1 Chimeric mAb (Cat. No. DMC100467)

DIMABIO CONFIDENTIAL

