

PRODUCT INFORMATION

Target	TIM3
Description	Monoclonal Cell Line Derived from K562 Cells, Engineered for Stable Expression of Human TIM3 Using Lentiviral Technology
Host Cells	K562
Uniprot ID	Q8TDQ0
Applications	FACS Data
Growth media	RPMI-1640+10% FBS+1% P.S+1% Gln+2 ug/mL Puromycin
Package	5E6 Cells/mL
Host Species	Human
Suggested Control	SKU: BME100173
Warranty and Disclaimer	1. Please inspect cells upon receipt and report any issues promptly. 2. We offer one-time replacements for issues reported within a week of receipt. 3. User-induced issues are not eligible for free replacements. 4. We do not accept liability for damages resulting from cell use, storage, or loss. 5. Feedback received more than one month after receipt will not be processed.
Yefei_Storage	Cells are shipped using dry ice and require liquid nitrogen storage for long term preservation.
Synonyms	HAVCR2; TIM3; TIMD3; FLJ14428; KIM3
Background	The protein encoded by this gene belongs to the immunoglobulin superfamily; and TIM family of proteins. CD4-positive T helper lymphocytes can be divided into types 1 (Th1) and 2 (Th2) on the basis of their cytokine secretion patterns. Th1 cells are involved in cell-mediated immunity to intracellular pathogens and delayed-type hypersensitivity reactions; whereas; Th2 cells are involved in the control of extracellular helminthic infections and the promotion of atopic and allergic diseases. This protein is a Th1-specific cell surface protein that regulates macrophage activation; and inhibits Th1-mediated auto- and alloimmune responses; and promotes immunological tolerance.
Usage	For research use only.



Hu_TIM3 K562 Cell Line

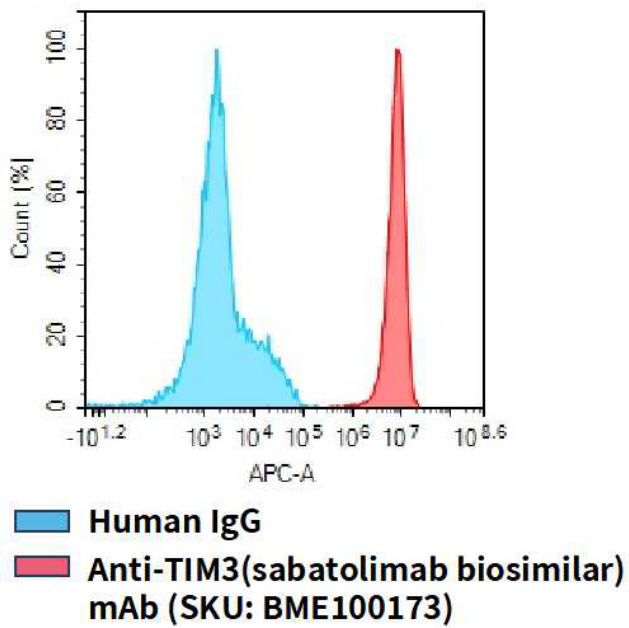


Figure 1. Flow cytometry analysis of human TIM3 overexpression using Hu_TIM3 K562 Cell Line (Cat. No. CEL100031) and Anti-TIM3(sabatomimab biosimilar) mAb (Cat. No. BME100173)

DIMABIO CONFIDENTIAL

