

**PRODUCT INFORMATION**

<b>Target</b>	ADGRE2
<b>Synonyms</b>	Adhesion G protein-coupled receptor E2;EGF-like module receptor 2;EGF-like module-containing mucin-like hormone receptor-like 2;CD312
<b>Description</b>	Recombinant human ADGRE2 protein with C-terminal 7×His tag
<b>Delivery</b>	In Stock
<b>Uniprot ID</b>	Q9UHX3
<b>Expression Host</b>	HEK293
<b>Tag</b>	C-7×His Tag
<b>Molecular Characterization</b>	ADGRE2(Gln24-Thr537) 7×His tag
<b>Molecular Weight</b>	The protein has a predicted molecular mass of 57.2 kDa after removal of the signal peptide. The apparent molecular mass of ADGRE2-His is approximately 70-100 kDa due to glycosylation.
<b>Purity</b>	The purity of the protein is greater than 85% as determined by SDS-PAGE and Coomassie blue staining.
<b>Formulation &amp; Reconstitution</b>	Lyophilized from sterile PBS, pH 7.4. Normally 5 % - 8% trehalose is added as protectants before lyophilization. Please see Certificate of Analysis for specific instructions of reconstitution.
<b>Storage &amp; Shipping</b>	Store at -20°C to -80°C for 12 months in lyophilized form. After reconstitution, if not intended for use within a month, aliquot and store at -80°C (Avoid repeated freezing and thawing). Lyophilized proteins are shipped at ambient temperature.
<b>Background</b>	This gene encodes a member of the class B seven-span transmembrane (TM7) subfamily of G-protein coupled receptors. These proteins are characterized by an extended extracellular region with a variable number of N-terminal epidermal growth factor-like domains coupled to a TM7 domain via a mucin-like spacer domain. The encoded protein is expressed mainly in myeloid cells where it promotes cell-cell adhesion through interaction with chondroitin sulfate chains. This gene is situated in a cluster of related genes on chromosome 19. Alternatively spliced transcript variants encoding multiple isoforms have been observed for this gene. [provided by RefSeq, Aug 2012]
<b>Usage</b>	Research use only
<b>Conjugate</b>	Unconjugated



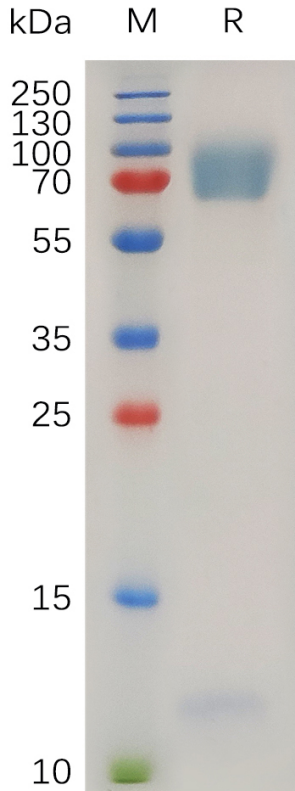


Figure 1. Human ADGRE2 Protein, His Tag on SDS-PAGE under reducing condition.

### Human ADGRE2, His Tagged protein ELISA

0.2  $\mu$ g of Human ADGRE2, His tagged protein per well

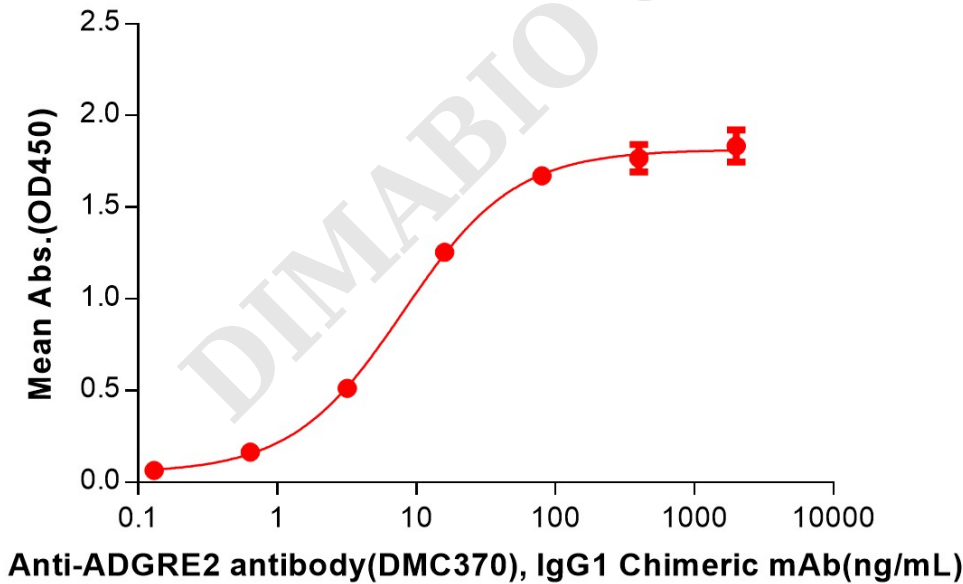


Figure 2. ELISA plate pre-coated by 2  $\mu$ g/mL (100  $\mu$ L/well) Human ADGRE2 Protein, His Tag (PME100741) can bind Anti-ADGRE2 antibody(DMC370), IgG1 Chimeric mAb in a linear range of 3.20-80 ng/mL.

