

PRODUCT INFORMATION

Target	AGTR1
Synonyms	AG2S;AGTR1B;AT1;AT1AR;AT1B;AT1BR;AT1R;AT2R1;HAT1R
Description	Recombinant Human AGTR1 Protein with C-terminal human Fc tag
Delivery	In Stock
Uniprot ID	P30556
Expression Host	HEK293
Tag	C-Human Fc Tag
Molecular Characterization	AGTR1(Met1-Ile27) hFc(Glu99-Ala330)
Molecular Weight	The protein has a predicted molecular mass of 29.2 kDa after removal of the signal peptide. The apparent molecular mass of AGTR1-hFc is approximately 35-55 kDa due to glycosylation.
Purity	The purity of the protein is greater than 95% as determined by SDS-PAGE and Coomassie blue staining.
Formulation & Reconstitution	Lyophilized from sterile PBS, pH 7.4. Normally 5% - 8% trehalose is added as protectants before lyophilization. Please see Certificate of Analysis for specific instructions of reconstitution.
Storage & Shipping	Store at -20°C to -80°C for 12 months in lyophilized form. After reconstitution, if not intended for use within a month, aliquot and store at -80°C (Avoid repeated freezing and thawing). Lyophilized proteins are shipped at ambient temperature.
Background	Angiotensin II is a potent vasopressor hormone and a primary regulator of aldosterone secretion. It is an important effector controlling blood pressure and volume in the cardiovascular system. It acts through at least two types of receptors. This gene encodes the type 1 receptor which is thought to mediate the major cardiovascular effects of angiotensin II. This gene may play a role in the generation of reperfusion arrhythmias following restoration of blood flow to ischemic or infarcted myocardium. It was previously thought that a related gene, denoted as AGTR1B, existed; however, it is now believed that there is only one type 1 receptor gene in humans. Alternative splicing of this gene results in multiple transcript variants. [provided by RefSeq, Aug 2020]
Usage	Research use only
Conjugate	Unconjugated



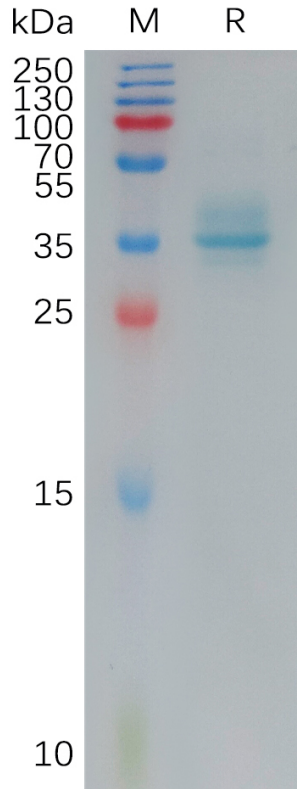


Figure 1. Human AGTR1 Protein, hFc Tag on SDS-PAGE under reducing condition.

DIMABIO CONFIDENTIAL

