

PRODUCT INFORMATION

Target	ARTN
Synonyms	ART;EVN;NBN;ENOVIN
Description	Recombinant Human ARTN Protein with C-terminal human Fc tag
Delivery	In Stock
Uniprot ID	Q5T4W7
Expression Host	HEK293
Tag	C-Human Fc Tag
Molecular Characterization	ARTN(Ala108-Gly220) hFc(Glu99-Ala330)
Molecular Weight	The protein has a predicted molecular mass of 38.1 kDa after removal of the signal peptide. The apparent molecular mass of ARTN-hFc is approximately 35-55 kDa due to glycosylation.
Purity	The purity of the protein is greater than 95% as determined by SDS-PAGE and Coomassie blue staining.
Formulation & Reconstitution	Lyophilized from sterile PBS, pH 7.4. Normally 5% - 8% trehalose is added as protectants before lyophilization. Please see Certificate of Analysis for specific instructions of reconstitution.
Storage & Shipping	Store at -20°C to -80°C for 12 months in lyophilized form. After reconstitution, if not intended for use within a month, aliquot and store at -80°C (Avoid repeated freezing and thawing). Lyophilized proteins are shipped at ambient temperature.
Background	This gene encodes a secreted ligand of the glial cell line-derived neurotrophic factor (GDNF) subfamily and TGF-beta (transforming growth factor-beta) superfamily of proteins. Ligands of this family bind various TGF-beta receptors leading to recruitment and activation of SMAD family transcription factors that regulate gene expression. The encoded preproprotein is proteolytically processed to generate each subunit of the disulfide-linked homodimer. This protein signals through the RET receptor and GFR alpha 3 coreceptor, and supports the survival of a number of peripheral neuron populations and at least one population of dopaminergic CNS neurons. This protein has also been shown to promote tumor growth, metastasis, and drug resistance in mammary carcinoma. [provided by RefSeq, Aug 2016]
Usage	Research use only
Conjugate	Unconjugated



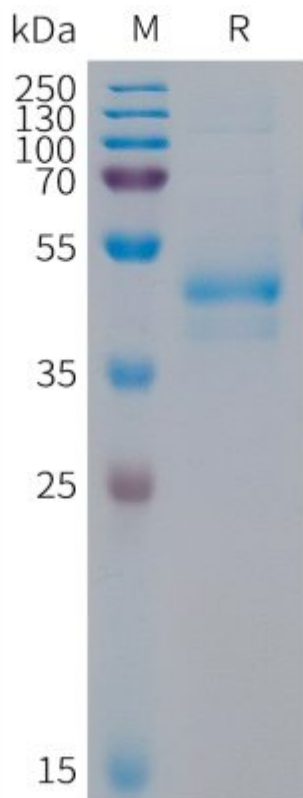


Figure 1. Human ARTN Protein, hFc Tag on SDS-PAGE under reducing condition.

DIMABIO CONFIDENTIAL

