

## PRODUCT INFORMATION

<b>Target</b>	B7-2
<b>Synonyms</b>	CD86;B7-2;B70;CD28LG2;LAB72;MGC34413
<b>Description</b>	Recombinant human B7-2 protein with C-terminal human Fc tag
<b>Delivery</b>	In Stock
<b>Uniprot ID</b>	P42081
<b>Expression Host</b>	HEK293
<b>Tag</b>	C-Human Fc Tag
<b>Molecular Characterization</b>	B7-2(Leu26-Pro247) hFc(Glu99-Ala330)
<b>Molecular Weight</b>	The protein has a predicted molecular mass of 51.5 kDa after removal of the signal peptide.
<b>Purity</b>	The purity of the protein is greater than 95% as determined by SDS-PAGE and Coomassie blue staining.
<b>Formulation &amp; Reconstitution</b>	Lyophilized from sterile PBS, pH 7.4. Normally 5% - 8% trehalose is added as protectants before lyophilization. Please see Certificate of Analysis for specific instructions of reconstitution.
<b>Storage &amp; Shipping</b>	Store at -20°C to -80°C for 12 months in lyophilized form. After reconstitution, if not intended for use within a month, aliquot and store at -80°C (Avoid repeated freezing and thawing). Lyophilized proteins are shipped at ambient temperature.
<b>Background</b>	This gene encodes a type I membrane protein that is a member of the immunoglobulin superfamily. This protein is expressed by antigen-presenting cells, and it is the ligand for two proteins at the cell surface of T cells, CD28 antigen and cytotoxic T-lymphocyte-associated protein 4. Binding of this protein with CD28 antigen is a costimulatory signal for activation of the T-cell. Binding of this protein with cytotoxic T-lymphocyte-associated protein 4 negatively regulates T-cell activation and diminishes the immune response. Alternative splicing results in several transcript variants encoding different isoforms.
<b>Usage</b>	Research use only
<b>Conjugate</b>	Unconjugated



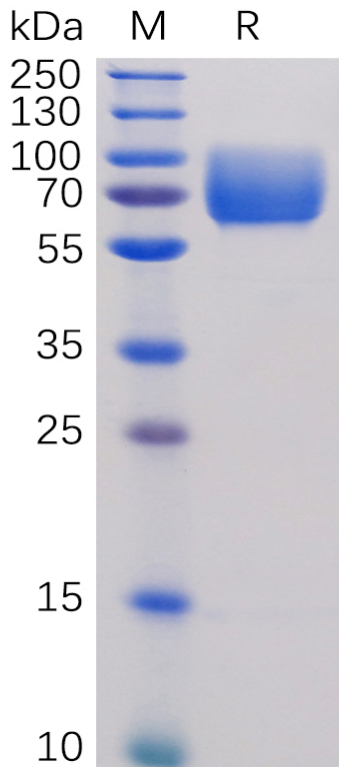


Figure 1. Human B7-2 Protein, hFc Tag on SDS-PAGE under reducing condition.

### Human B7-2, hFc Tagged protein ELISA

0.2 µg of Human B7-2, hFc Tagged protein per well

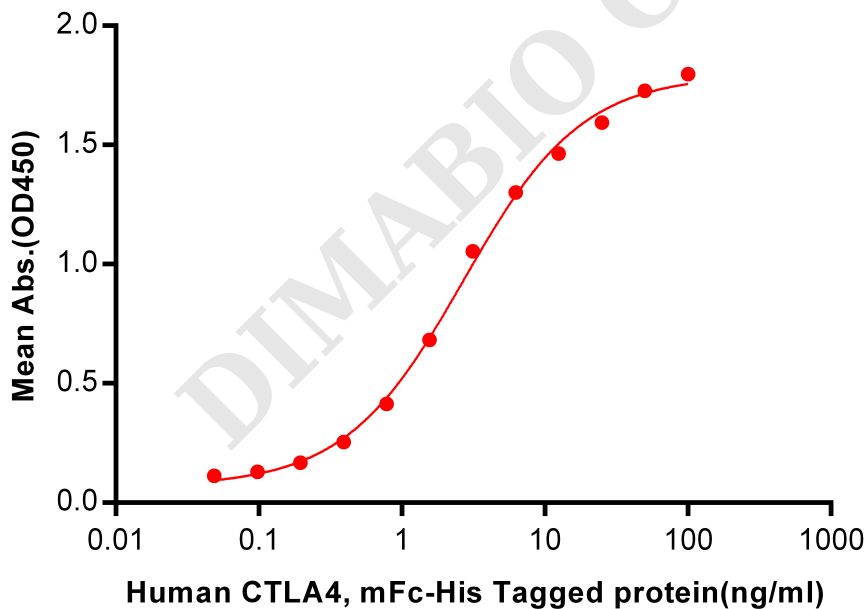


Figure 2. ELISA plate pre-coated by 2 µg/ml (100 µl/well) Human B7-2, hFc tagged protein (PME100474) can bind Human CTLA4, mFc-His tagged protein PME100017 in a linear range of 0.048-2.694 ng/ml.



## Human B7-2, hFc Tagged protein ELISA

0.2  $\mu\text{g}$  of B7-2, hFc Tagged protein per well

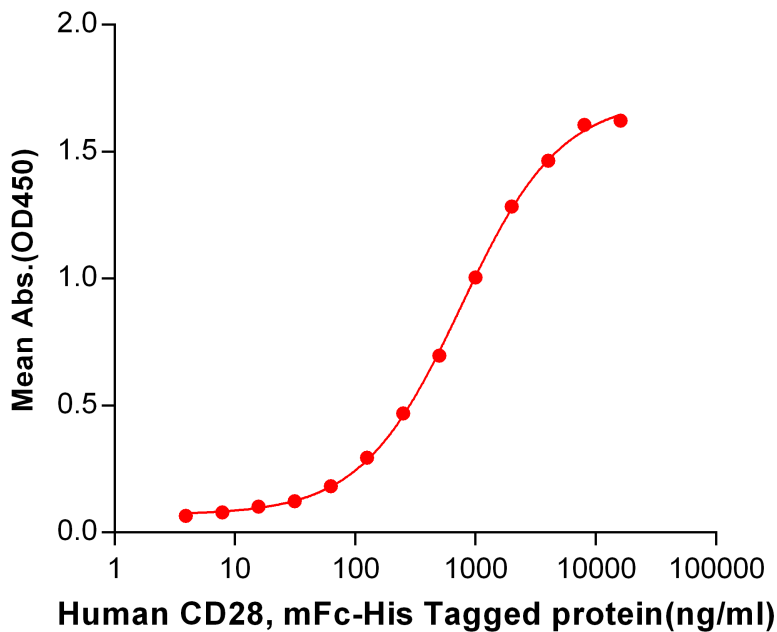


Figure 3. ELISA plate pre-coated by 2  $\mu\text{g}/\text{ml}$  (100  $\mu\text{l}/\text{well}$ ) Human B7-2, hFc tagged protein (PME100474) can bind Human CD28, mFc-His tagged protein PME100014 in a linear range of 62.5-4000 ng/ml.

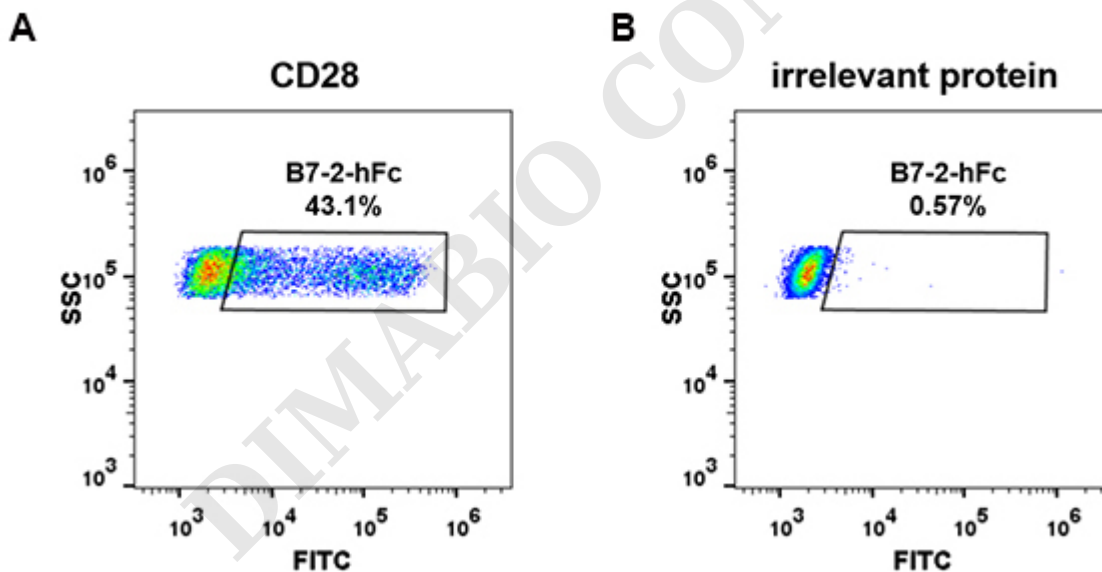


Figure 4. HEK293 cell line transfected with irrelevant protein (B) and human CD28 (A) were surface stained with Human B7-2, hFc tagged protein (PME100474) 1  $\mu\text{g}/\text{ml}$  followed by Alexa 488-conjugated anti-human IgG secondary antibody.

