

PRODUCT INFORMATION

Target	BACE1
Synonyms	ASP2;BACE;HSPC104
Description	Recombinant Human BACE1 Protein with C-terminal 6×His tag
Delivery	In Stock
Uniprot ID	P56817
Expression Host	HEK293
Tag	C-6×His Tag
Molecular Characterization	BACE1(Thr22-Thr457) 6×His tag
Molecular Weight	The protein has a predicted molecular mass of 49.3 kDa after removal of the signal peptide. The apparent molecular mass of BACE1-His is approximately 55-100 kDa due to glycosylation.
Purity	The purity of the protein is greater than 85% as determined by SDS-PAGE and Coomassie blue staining.
Formulation & Reconstitution	Lyophilized from sterile PBS, pH 7.4. Normally 5% - 8% trehalose is added as protectants before lyophilization. Please see Certificate of Analysis for specific instructions of reconstitution.
Storage & Shipping	Store at -20°C to -80°C for 12 months in lyophilized form. After reconstitution, if not intended for use within a month, aliquot and store at -80°C (Avoid repeated freezing and thawing). Lyophilized proteins are shipped at ambient temperature.
Background	This gene encodes a member of the peptidase A1 family of aspartic proteases. Alternative splicing results in multiple transcript variants, at least one of which encodes a preproprotein that is proteolytically processed to generate the mature protease. This transmembrane protease catalyzes the first step in the formation of amyloid beta peptide from amyloid precursor protein. Amyloid beta peptides are the main constituent of amyloid beta plaques, which accumulate in the brains of human Alzheimer's disease patients. [provided by RefSeq, Nov 2015]
Usage	Research use only
Conjugate	Unconjugated



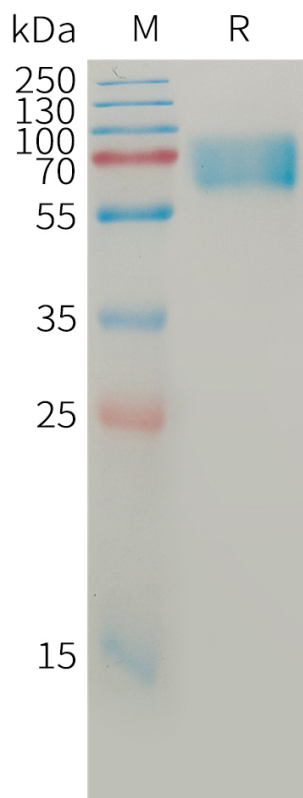


Figure 1. Human BACE1 Protein, His Tag on SDS-PAGE under reducing condition.

DIMABIO CONFIDENTIAL

