

PRODUCT INFORMATION

Target	BAFF
Synonyms	TNFSF13B;BAFF;BLYS;CD257;DTL;TALL1;THANK;TNFSF20;ZTNF4;TALL-1
Description	Recombinant Human BAFF protein with N-terminal human Fc
Delivery	In Stock
Uniprot ID	Q9Y275
Expression Host	HEK293
Tag	N-Human Fc Tag
Molecular Characterization	hFc(Glu99-Ala330) BAFF(Ala134-Leu285)
Molecular Weight	The protein has a predicted molecular mass of 43.2 kDa after removal of the signal peptide. The apparent molecular mass of hFc-BAFF is approximately 50-55 kDa due to glycosylation.
Purity	The purity of the protein is greater than 95% as determined by SDS-PAGE and Coomassie blue staining.
Formulation & Reconstitution	Lyophilized from sterile PBS, pH 7.4. Normally 5% - 8% trehalose is added as protectants before lyophilization. Please see Certificate of Analysis for specific instructions of reconstitution.
Storage & Shipping	Store at -20°C to -80°C for 12 months in lyophilized form. After reconstitution, if not intended for use within a month, aliquot and store at -80°C (Avoid repeated freezing and thawing). Lyophilized proteins are shipped at ambient temperature.
Background	The protein encoded by this gene is a cytokine that belongs to the tumor necrosis factor (TNF) ligand family. This cytokine is a ligand for receptors TNFRSF13B/TACI, TNFRSF17/BCMA, and TNFRSF13C/BAFFR. This cytokine is expressed in B cell lineage cells, and acts as a potent B cell activator. It has been also shown to play an important role in the proliferation and differentiation of B cells. Alternatively spliced transcript variants encoding distinct isoforms have been identified.
Usage	Research use only
Conjugate	Unconjugated



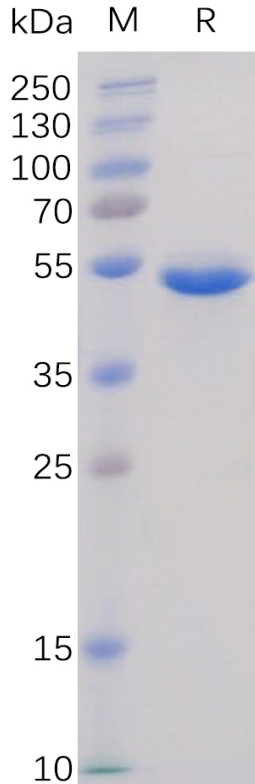


Figure 1. Human BAFF Protein, hFc Tag on SDS-PAGE under reducing condition.

Human BAFF, hFc Tagged protein ELISA

0.2 μ g of BAFF, hFc Tagged protein per well

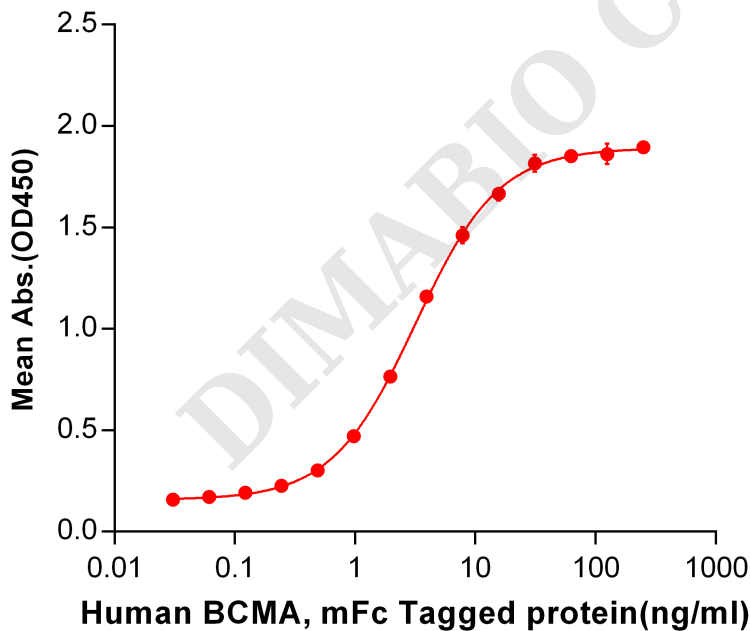


Figure 2. ELISA plate pre-coated by 2 μ g/ml (100 μ l/well) Human BAFF, hFc tagged protein (PME100043) can bind Human BCMA, mFc tagged protein PME100035 in a linear range of 0.03-15.625 ng/ml.



Human BAFF, hFc Tagged protein ELISA

0.2 μ g of BAFF, hFc Tagged protein per well

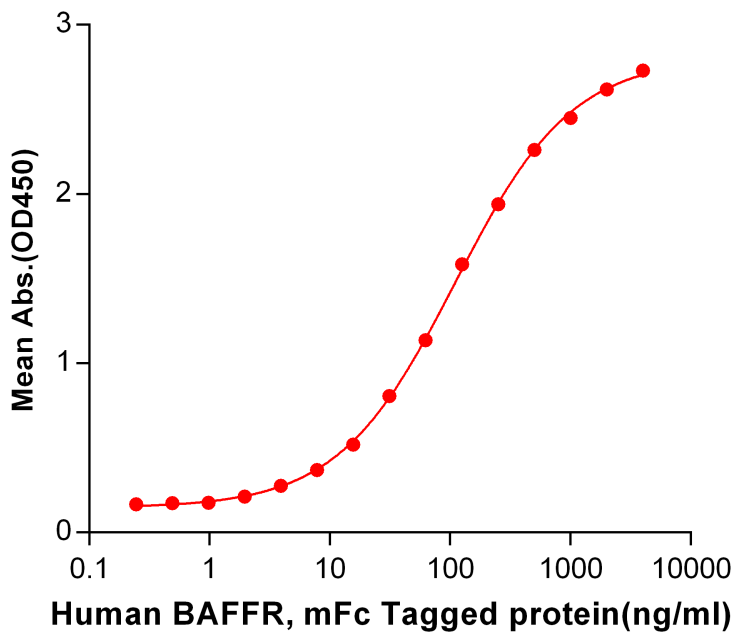


Figure 3. ELISA plate pre-coated by 2 μ g/ml (100 μ l/well) Human BAFF, hFc tagged protein (PME100043) can bind Human BAFF-R, mFc tagged protein PME100044 in a linear range of 0.488-250.0 ng/ml.

Human BAFF, hFc Tagged protein ELISA

0.2 μ g of Human BAFF, hFc Tagged protein per well

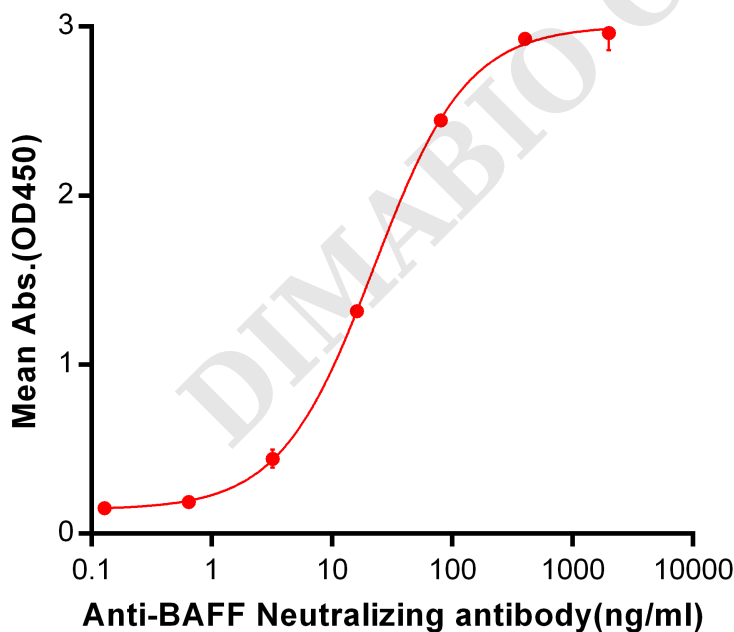


Figure 4. ELISA plate pre-coated by 2 μ g/ml (100 μ l/well) Human BAFF, hFc tagged protein (PME100043) can bind Anti-BAFF Neutralizing antibody BME100044 in a linear range of 3.2-400 ng/ml.



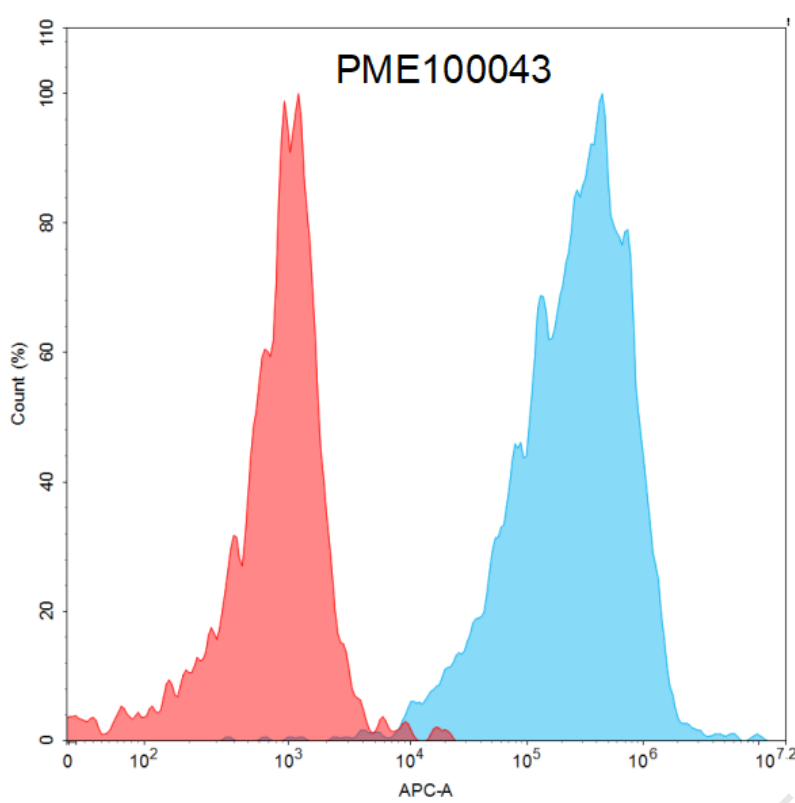


Figure 5. Flow cytometry analysis with 15 µg/mL Human BAFF Protein, hFc tag (PME100043) on Expi293 cells transfected with human BAFF-R (Blue histogram) or Expi293 transfected with irrelevant protein (Red histogram).

DIMABIO CONFIDENTIAL

