

**PRODUCT INFORMATION**

<b>Target</b>	BTN3A1
<b>Synonyms</b>	BTN3A1;BTF5;CD277;BTN3.1;BT3.1
<b>Description</b>	Recombinant Human BTN3A1 protein with C-terminal mouse Fc and 6×His tag
<b>Delivery</b>	In Stock
<b>Uniprot ID</b>	O00481
<b>Expression Host</b>	HEK293
<b>Tag</b>	C-Mouse Fc and 6×His Tag
<b>Molecular Characterization</b>	BTN3A1(Gln30-Gly254) mFc(Pro99-Lys330) 6×His tag
<b>Molecular Weight</b>	The protein has a predicted molecular mass of 51.36 kDa after removal of the signal peptide.
<b>Purity</b>	The purity of the protein is greater than 95% as determined by SDS-PAGE and Coomassie blue staining.
<b>Formulation &amp; Reconstitution</b>	Lyophilized from sterile PBS, pH 7.4. Normally 5 % - 8% trehalose is added as protectants before lyophilization. Please see Certificate of Analysis for specific instructions of reconstitution.
<b>Storage &amp; Shipping</b>	Store at -20°C to -80°C for 12 months in lyophilized form. After reconstitution, if not intended for use within a month, aliquot and store at -80°C (Avoid repeated freezing and thawing). Lyophilized proteins are shipped at ambient temperature.
<b>Background</b>	The butyrophilin (BTN) genes are a group of major histocompatibility complex (MHC)-associated genes that encode type I membrane proteins with 2 extracellular immunoglobulin (Ig) domains and an intracellular B30.2 (PRYSPRY) domain. Three subfamilies of human BTN genes are located in the MHC class I region: the single-copy BTN1A1 gene (MIM 601610) and the BTN2 (e.g., BTN2A1, MIM 613590) and BTN3 (e.g., BNT3A1) genes, which have undergone tandem duplication, resulting in 3 copies of each.
<b>Usage</b>	Research use only
<b>Conjugate</b>	Unconjugated



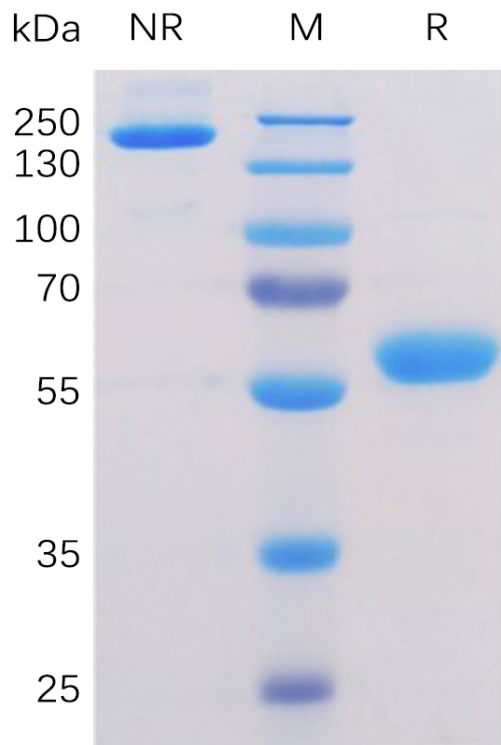


Figure 1. Human BTN3A1 Protein, mFc-His Tag on SDS-PAGE under non-reducing (NR) and reducing (R) conditions.

### Human BTN3A1, mFc-His tagged protein ELISA

0.1  $\mu$ g of Human BTN3A1, mFc-His tagged protein per well

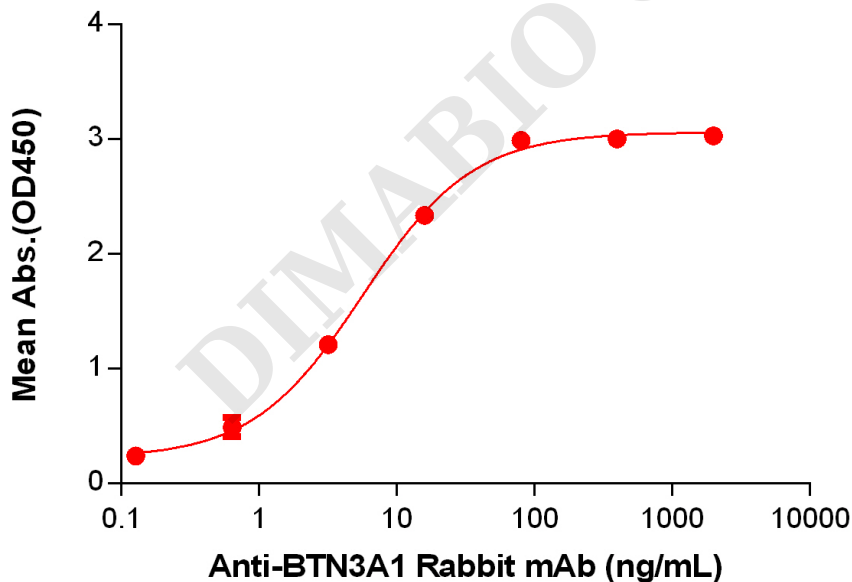


Figure 2. ELISA plate pre-coated by 1  $\mu$ g/mL (100  $\mu$ L/well) Human BTN3A1 protein, mFc-His Tag (PME100056) can bind Anti-BTN3A1 Rabbit mAb in a linear range of 3.2-16 ng/mL.



### Human BTN3A1, mFc-His Tagged protein ELISA

0.2  $\mu\text{g}$  of Human BTN3A1, mFc-His tagged protein per well

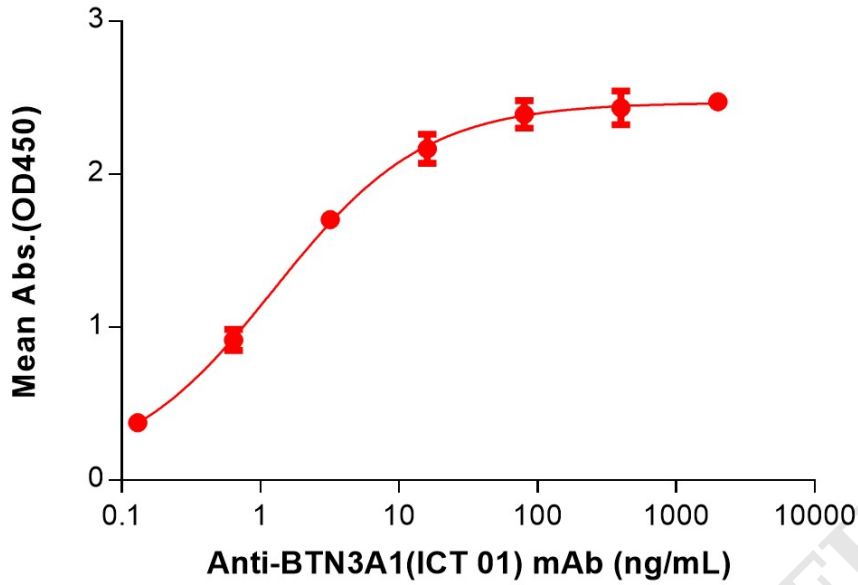


Figure 3. ELISA plate pre-coated by 2  $\mu\text{g}/\text{mL}$  (100  $\mu\text{L}/\text{well}$ ) Human BTN3A1 Protein, mFc-His Tag (PME100056) can bind Anti-BTN3A1(ICT 01) mAb (BME100152) in a linear range of 0.13-16 ng/mL.

