

PRODUCT INFORMATION

Target	C5
Synonyms	C5D;C5a;C5b;ECLZB;CPAMD4
Description	Recombinant human C5 Protein with C-terminal 10×His tag
Delivery	In Stock
Uniprot ID	P01031
Expression Host	HEK293
Tag	C-10×His Tag
Molecular Characterization	C5(Gln19-Cys1676) 10×His tag
Molecular Weight	The protein has a predicted molecular mass of 187.9 kDa after removal of the signal peptide.
Purity	The purity of the protein is greater than 85% as determined by SDS-PAGE and Coomassie blue staining.
Formulation & Reconstitution	Lyophilized from sterile PBS, pH 7.4. Normally 5 % - 8% trehalose is added as protectants before lyophilization. Please see Certificate of Analysis for specific instructions of reconstitution.
Yefei_Storage	Store at -20°C to -80°C for 12 months in lyophilized form. After reconstitution, if not intended for use within a month, aliquot and store at -80°C (Avoid repeated freezing and thawing). Lyophilized proteins are shipped at ambient temperature.
Background	This gene encodes a component of the complement system, a part of the innate immune system that plays an important role in inflammation, host homeostasis, and host defense against pathogens. The encoded preproprotein is proteolytically processed to generate multiple protein products, including the C5 alpha chain, C5 beta chain, C5a anaphylatoxin and C5b. The C5 protein is comprised of the C5 alpha and beta chains, which are linked by a disulfide bridge. Cleavage of the alpha chain by a convertase enzyme results in the formation of the C5a anaphylatoxin, which possesses potent spasmogenic and chemotactic activity, and the C5b macromolecular cleavage product, a subunit of the membrane attack complex (MAC). Mutations in this gene cause complement component 5 deficiency, a disease characterized by recurrent bacterial infections. Alternative splicing results in multiple transcript variants. [provided by RefSeq, Nov 2015]
Usage	Research use only
Conjugate	Unconjugated



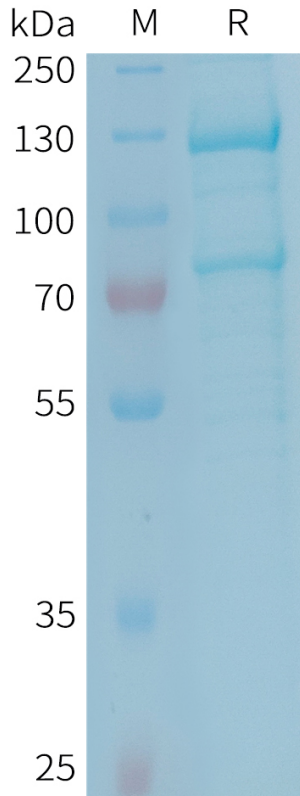


Figure 1. Human C5 Protein, His Tag on SDS-PAGE under reducing condition.

Human C5, His Tagged protein ELISA

0.2 μ g of Human C5, His tagged protein per well

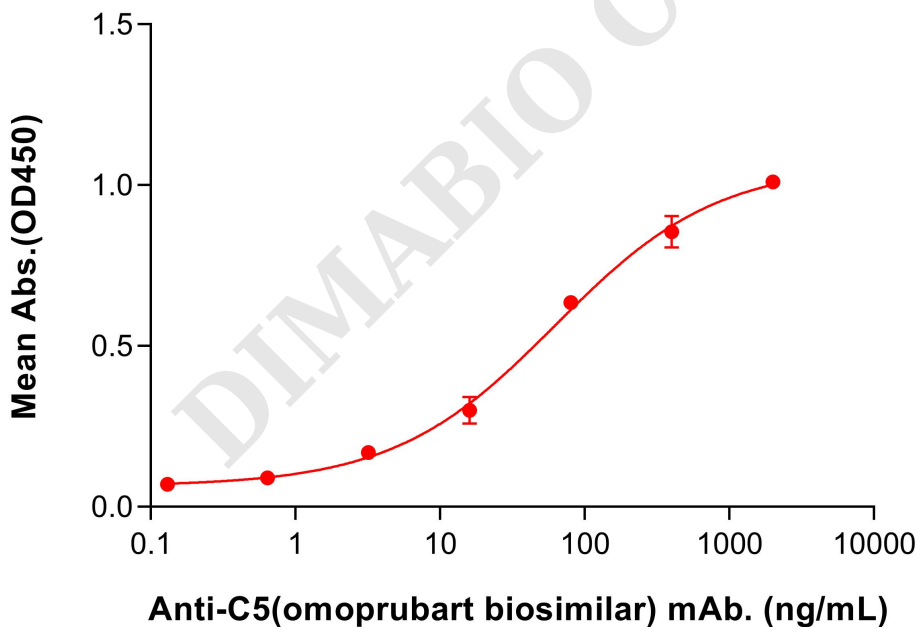


Figure 2. ELISA plate pre-coated by 2 μ g/mL (100 μ L/well) Human C5 Protein, His Tag (PME101347) can bind Anti-C5 (omoprubarb biosimilar) mAb (BME100603) in a linear range of 16–80 ng/mL.

