

## PRODUCT INFORMATION

<b>Tag</b>	<b>Warning:</b> Undefined variable \$hasAttributeValueDescription in C:\wwwroot\mirror\dimabio.com\wp-content\plugins\woocommerce-print-products\publicclass-woocommerce-print-products-public.php on line 2806 C-Flag&Strep Tag
<b>Target</b>	CCR2
<b>Synonyms</b>	CC-CR-2; CCR-2; CCR2A; CCR2B; CD192; CKR2; CKR2A; CKR2B; CMKBR2; MCP-1-R
<b>Description</b>	Human CCR2-Strep full length protein-synthetic nanodisc
<b>Delivery</b>	In Stock
<b>Uniprot ID</b>	P41597
<b>Expression Host</b>	HEK293
<b>Protein Families</b>	Druggable Genome, GPCR, Transmembrane
<b>Protein Pathways</b>	Chemokine signaling pathway, Cytokine-cytokine receptor interaction
<b>Molecular Weight</b>	The human full length CCR2-Strep protein has a MW of 41.9 kDa
<b>Formulation &amp; Reconstitution</b>	Lyophilized from nanodisc solubilization buffer (20 mM Tris-HCl, 150 mM NaCl, pH 8.0). Normally 5% - 8% trehalose is added as protectants before lyophilization. Please see Certificate of Analysis for specific instructions. Do not use solvents with a pH below 6.5 or those containing high concentrations of divalent metal ions (greater than 5 mM) in subsequent experiments.
<b>Yefel_Storage</b>	Store at -20°C to -80°C for 12 months in lyophilized form. After reconstitution, if not intended for use within a month, aliquot and store at -80°C (Avoid repeated freezing and thawing). Lyophilized proteins are shipped at ambient temperature.
<b>Background</b>	The protein is a receptor for monocyte chemoattractant protein-1, a chemokine which specifically mediates monocyte chemotaxis. Monocyte chemoattractant protein-1 is involved in monocyte infiltration in inflammatory diseases such as rheumatoid arthritis as well as in the inflammatory response against tumors. The encoded protein mediates agonist-dependent calcium mobilization and inhibition of adenylyl cyclase. This protein can also be a coreceptor with CD4 for HIV-1 infection. This gene is located in the chemokine receptor gene cluster region of chromosome 3.
<b>Usage</b>	Research use only
<b>Conjugate</b>	Unconjugated

### ELISA assay to evaluate CCR2-Strep-Nanodisc 0.2µg Human CCR2-Strep-Nanodisc per well

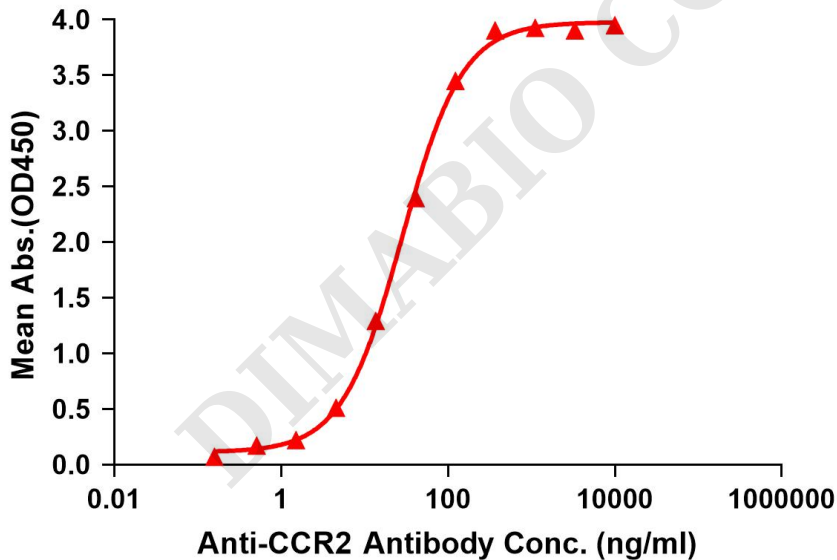


Figure 1. Elisa plates were pre-coated with C-Flag&Strep Tag CCR2-Strep-Nanodisc (0.2µg/per well). Serial diluted anti-CCR2 monoclonal antibody (DMC100447) solutions were added, washed, and incubated with secondary antibody before Elisa reading. From above data, the EC50 for anti-CCR2 monoclonal antibody binding with CCR2-Strep-Nanodisc is 28.36ng/ml.



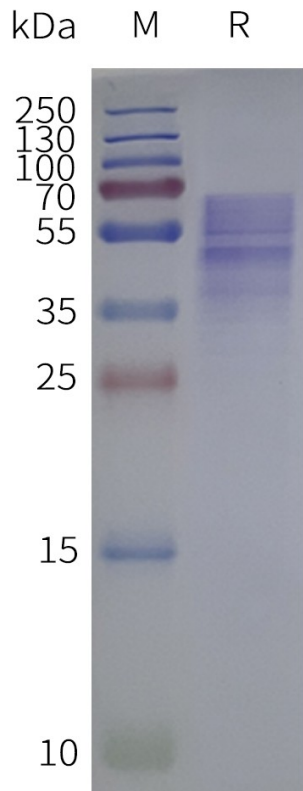


Figure 2. Human CCR2-Strep-Nanodisc, C-Flag&Strep Tag on SDS-PAGE

DIMABIO CONFIDENTIAL

