

PRODUCT INFORMATION

Tag	Warning: Undefined variable \$hasAttributeValueDescription in C:\wwwroot\mirror\dimabio.com\wp-content\plugins\woocommerce-print-products\publicclass\woocommerce-print-products-public.php on line 2806 C-Flag&Strep Tag
Target	CCR8
Synonyms	CC-CR-8,CCR-8,CDw198,CKRL1,CMKBR8,CMKBR2,CY6,GPRCY6,TER1
Description	Human CCR8-Strep full length protein-synthetic nanodisc
Delivery	In Stock
Uniprot ID	P51685
Expression Host	HEK293
Protein Families	Druggable Genome, GPCR, Transmembrane
Protein Pathways	Chemokine signaling pathway,cytokine-cytokine receptor interaction
Molecular Weight	The human full length CCR8-Strep Protein has a MW of 40.7 kDa
Formulation & Reconstitution	Lyophilized from nanodisc solubilization buffer (20 mM Tris-HCl, 150 mM NaCl, pH 8.0). Normally 5% - 8% trehalose is added as protectants before lyophilization. Please see Certificate of Analysis for specific instructions of reconstitution.
Yefei_Storage	Store at -20°C to -80°C for 12 months in lyophilized form. After reconstitution, if not intended for use within a month, aliquot and store at -80°C (Avoid repeated freezing and thawing). Lyophilized proteins are shipped at ambient temperature.
Background	A member of the beta chemokine receptor family, which is predicted to be a seven transmembrane protein similar to G protein-coupled receptors. Chemokines and their receptors are important for the migration of various cell types into the inflammatory sites. This receptor protein preferentially expresses in the thymus. I-309,thymus activation-regulated cytokine (TARC) and macrophage inflammatory protein-1 beta (MIP-1 beta) have been identified as ligands of this receptor. Studies of this receptor and its ligands suggested its role in regulation of monocyte chemotaxis and thymic cell apoptosis. More specifically,this receptor may contribute to the proper positioning of activated T cells within the antigenic challenge sites and specialized areas of lymphoid tissues. This gene is located at the chemokine receptor gene cluster region.
Usage	Research use only
Conjugate	Unconjugated

ELISA assay to evaluate CCR8-Strep-Nanodisc 0.2µg Human CCR8-Strep-Nanodisc per well

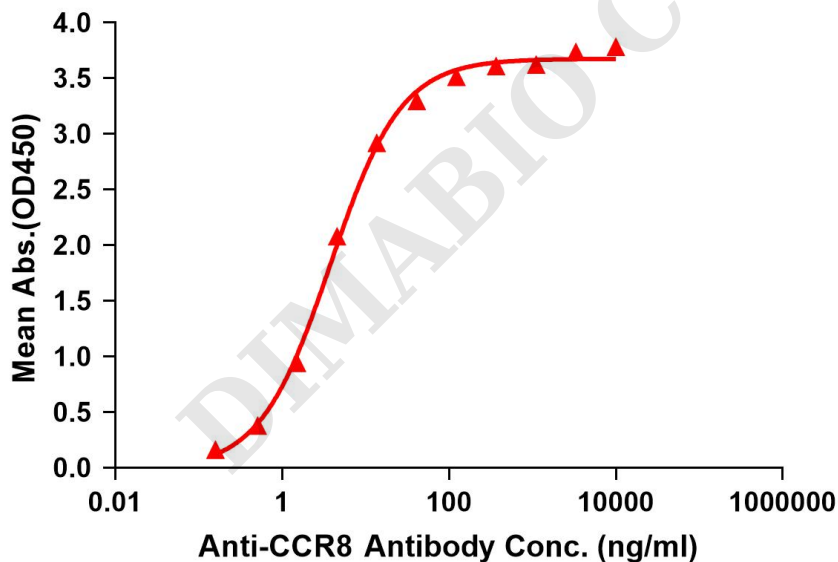


Figure 1. Elisa plates were pre-coated with C-Flag&Strep Tag CCR8-Strep-Nanodisc (0.2µg/per well). Serial diluted anti-CCR8 monoclonal antibody (BME100115) solutions were added, washed, and incubated with secondary antibody before Elisa reading. From above data, the EC50 for anti-CCR8 monoclonal antibody binding with CCR8-Strep-Nanodisc is 3.815ng/ml.



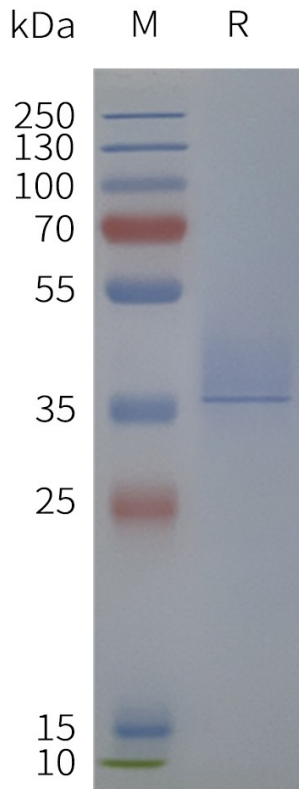


Figure 2. Human CCR8-Strep-Nanodisc, C-Flag&Strep Tag on SDS-PAGE

DIMABIO CONFIDENTIAL

