

PRODUCT INFORMATION

Target	CD155
Synonyms	PVR;FLJ25946;PVS;CD155;TAGE4;HVED;NECL5
Description	Recombinant human CD155 protein with C-terminal human Fc tag
Delivery	In Stock
Uniprot ID	P15151
Expression Host	HEK293
Tag	C-Human Fc Tag
Molecular Characterization	CD155(Trp21-Asn343) hFc(Glu99-Ala330)
Molecular Weight	The protein has a predicted molecular mass of 61.2 kDa after removal of the signal peptide. The apparent molecular mass of CD155-hFc is approximately 70-100 kDa due to glycosylation.
Purity	The purity of the protein is greater than 95% as determined by SDS-PAGE and Coomassie blue staining.
Formulation & Reconstitution	Lyophilized from sterile PBS, pH 7.4. Normally 5% - 8% trehalose is added as protectants before lyophilization. Please see Certificate of Analysis for specific instructions of reconstitution.
Storage & Shipping	Store at -20°C to -80°C for 12 months in lyophilized form. After reconstitution, if not intended for use within a month, aliquot and store at -80°C (Avoid repeated freezing and thawing). Lyophilized proteins are shipped at ambient temperature.
Background	The protein encoded by this gene is a transmembrane glycoprotein belonging to the immunoglobulin superfamily. The external domain mediates cell attachment to the extracellular matrix molecule vitronectin, while its intracellular domain interacts with the dynein light chain Tctex-1/DYNLT1. The gene is specific to the primate lineage, and serves as a cellular receptor for poliovirus in the first step of poliovirus replication. Multiple transcript variants encoding different isoforms have been found for this gene.
Usage	Research use only
Conjugate	Unconjugated



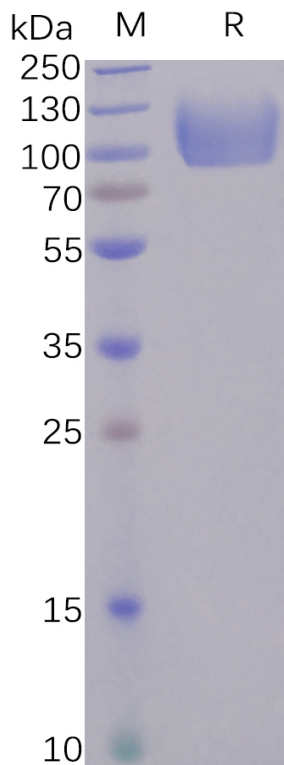


Figure 1. Human CD155 Protein, hFc Tag on SDS-PAGE under reducing condition.

Human CD155, hFc Tagged protein ELISA

0.2 μ g of Human DNAM-1, mFc-His Tagged protein per well

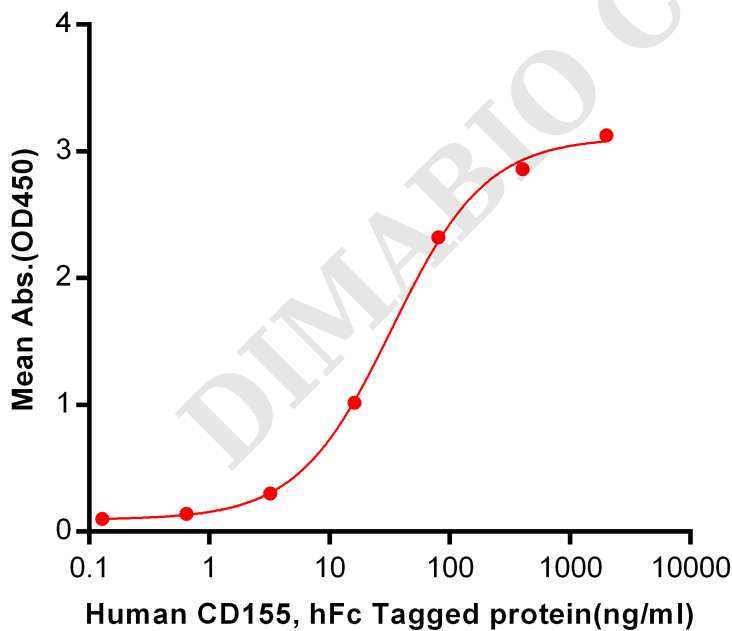


Figure 2. ELISA plate pre-coated by 2 μ g/ml (100 μ l/well) Human DNAM-1, mFc-His tagged protein PME100050 can bind Human CD155, hFc Tagged protein \square PME100485 \square in a linear range of 0.128-32.88 ng/ml.



Human CD155, hFc Tagged protein ELISA

0.2 μ g of CD155, hFc Tagged protein per well

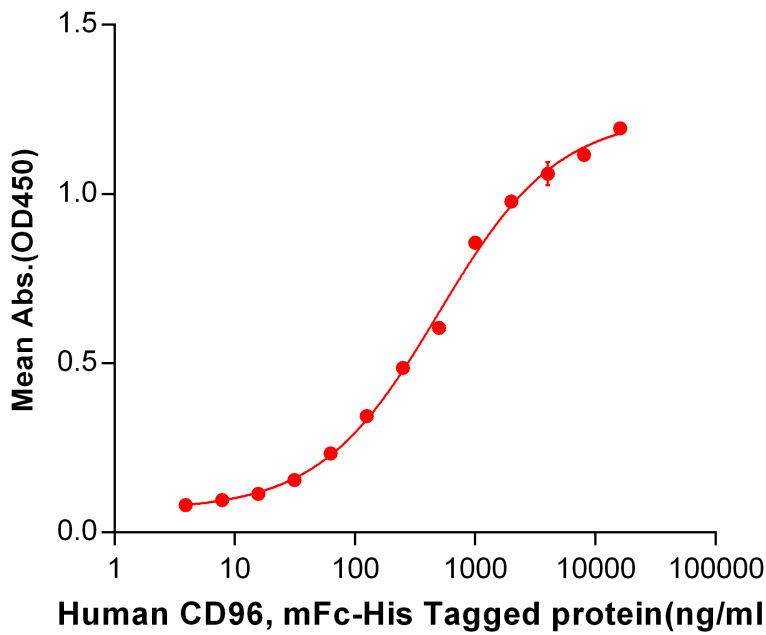


Figure 3. ELISA plate pre-coated by 2 μ g/ml (100 μ l/well) Human CD96, mFc-His tagged protein PME100028 can bind Human CD155, hFc tagged protein (PME100485) in a linear range of 62.5-4000 ng/ml.

DIMABIO CONFIDENTIAL

