

PRODUCT INFORMATION

Target	CD22
Synonyms	CD22;SIGLEC2;BL-CAM;SIGLEC-2;Siglec2;SIGLEC2FLJ22814
Description	Recombinant human CD22 protein with C-terminal human Fc and 6×His tag
Delivery	In Stock
Uniprot ID	P20273
Expression Host	HEK293
Tag	C-Human Fc and 6×His Tag
Molecular Characterization	CD22(Asp20-Arg687) hFc(Glu99-Ala330) 6×His tag
Molecular Weight	The protein has a predicted molecular mass of 102.1 kDa after removal of the signal peptide. The apparent molecular mass of CD22-hFc-His is approximately 130-180 kDa due to glycosylation.
Purity	The purity of the protein is greater than 95% as determined by SDS-PAGE and Coomassie blue staining.
Formulation & Reconstitution	Lyophilized from sterile PBS, pH 7.4. Normally 5% - 8% trehalose is added as protectants before lyophilization. Please see Certificate of Analysis for specific instructions of reconstitution.
Yefei_Storage	Store at -20°C to -80°C for 12 months in lyophilized form. After reconstitution, if not intended for use within a month, aliquot and store at -80°C (Avoid repeated freezing and thawing). Lyophilized proteins are shipped at ambient temperature.
Background	B-cell receptor CD22 is also known as Sialic acid-binding Ig-like lectin 2 (Siglec-2), B-lymphocyte cell adhesion molecule (BL-CAM), T-cell surface antigen Leu-14, which belongs to the immunoglobulin superfamily and SIGLEC (sialic acid binding Ig-like lectin) family. CD22 mediates B-cell B-cell interactions, and may be involved in the localization of B-cells in lymphoid tissues. Siglec-2 / CD22 binds sialylated glycoproteins, one of which is CD45. Siglec2 / CD22 plays a role in positive regulation through interaction with Src family tyrosine kinases and may also act as an inhibitory receptor by recruiting cytoplasmic phosphatases via their SH2 domains that block signal transduction through dephosphorylation of signaling molecules.
Usage	Research use only
Conjugate	Unconjugated



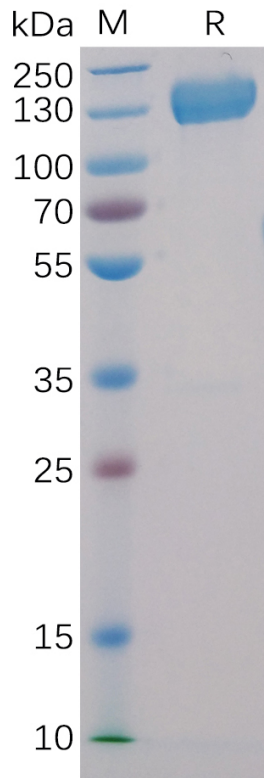


Figure 1. Human CD22, hFc-His Tag on SDS-PAGE under reducing condition.

Human CD22, hFc-His Tagged protein ELISA

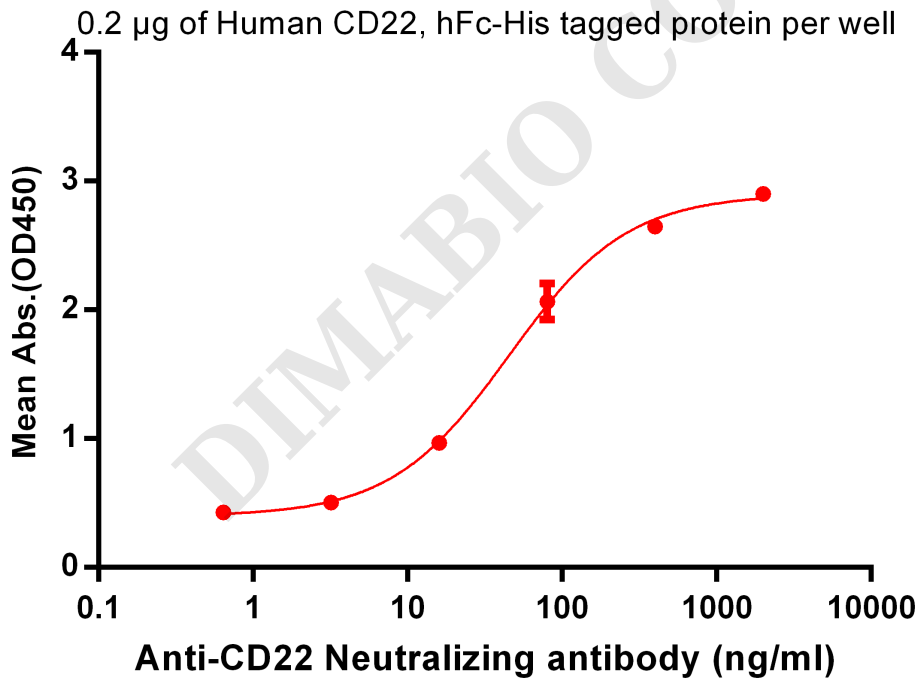


Figure 2. ELISA plate pre-coated by 2 μ g/ml (100 μ l/well) Human CD22, hFc-His tagged protein (PME100005) can bind Anti-CD22 Neutralizing antibody BME100029 in a linear range of 3.2-400 ng/ml.

