

PRODUCT INFORMATION

| | |
|-----------------------------------------|-----------------------------------------------------------------------------------------------------------------------------------------------------------------------------------------------------------------------------------------------------|
| Target | CD300C |
| Synonyms | LIR; CLM-6; CMRF35; IGSF16; CMRF-35; CMRF35A; CMRF-35A; CMRF35A1; CMRF35-A1 |
| Description | Recombinant human CD300C Protein with C-terminal human Fc tag |
| Delivery | In Stock |
| Uniprot ID | Q08708 |
| Expression Host | HEK293 |
| Tag | C-Human Fc tag |
| Molecular Characterization | CD300C(Gly21-Arg183) hFc(Glu99-Ala330) |
| Molecular Weight | The protein has a predicted molecular mass of 44.0 kDa after removal of the signal peptide. The apparent molecular mass of CD300C-hFc is approximately 55-70 kDa due to glycosylation. |
| Purity | The purity of the protein is greater than 95% as determined by SDS-PAGE and Coomassie blue staining. |
| Formulation & Reconstitution | Lyophilized from sterile PBS, pH 7.4. Normally 5 % - 8% trehalose is added as protectants before lyophilization. Please see Certificate of Analysis for specific instructions of reconstitution. |
| Storage & Shipping | Store at -20°C to -80°C for 12 months in lyophilized form. After reconstitution, if not intended for use within a month, aliquot and store at -80°C (Avoid repeated freezing and thawing). Lyophilized proteins are shipped at ambient temperature. |
| Background | The CMRF35 antigen, which was identified by reactivity with a monoclonal antibody, is present on monocytes, neutrophils, and some T and B lymphocytes (Jackson et al., 1992 [PubMed 1349532]). [supplied by OMIM, Mar 2008] |
| Usage | Research use only |
| Conjugate | Unconjugated |



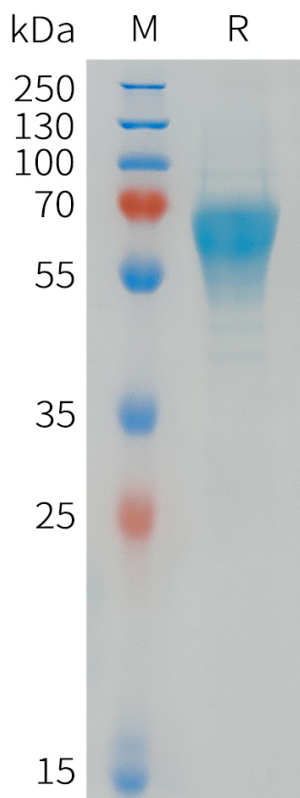


Figure 1. Human CD300C Protein, hFc Tag on SDS-PAGE under reducing condition.

DIMABIO CONFIDENTIAL

