

PRODUCT INFORMATION

Target	CD3E
Synonyms	CD3e;T3E
Description	Recombinant human CD3E protein with C-terminal human Fc tag
Delivery	In Stock
Uniprot ID	P07766
Expression Host	HEK293
Tag	C-Human Fc Tag
Molecular Characterization	CD3E(Asp23-Asp126) hFc(Glu99-Ala330)
Molecular Weight	The protein has a predicted molecular mass of 37.9 kDa after removal of the signal peptide. The apparent molecular mass of CD3E-hFc is approximately 35-55 kDa due to glycosylation.
Purity	The purity of the protein is greater than 95% as determined by SDS-PAGE and Coomassie blue staining.
Formulation & Reconstitution	Lyophilized from sterile PBS, pH 7.4. Normally 5% - 8% trehalose is added as protectants before lyophilization. Please see Certificate of Analysis for specific instructions of reconstitution.
Yefei_Storage	Store at -20°C to -80°C for 12 months in lyophilized form. After reconstitution, if not intended for use within a month, aliquot and store at -80°C (Avoid repeated freezing and thawing). Lyophilized proteins are shipped at ambient temperature.
Background	The protein encoded by this gene is the CD3-epsilon polypeptide, which together with CD3-gamma, -delta and -zeta, and the T-cell receptor alpha/beta and gamma/delta heterodimers, forms the T-cell receptor-CD3 complex. This complex plays an important role in coupling antigen recognition to several intracellular signal-transduction pathways. The genes encoding the epsilon, gamma and delta polypeptides are located in the same cluster on chromosome 11. The epsilon polypeptide plays an essential role in T-cell development. Defects in this gene cause immunodeficiency. This gene has also been linked to a susceptibility to type I diabetes in women. [provided by RefSeq, Jul 2008]
Usage	Research use only
Conjugate	Unconjugated



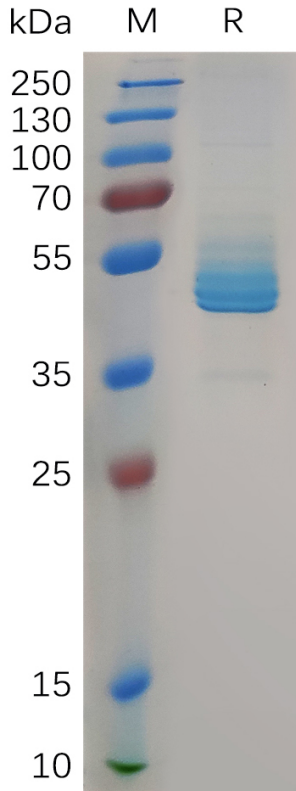


Figure 1. Human CD3E Protein, hFc Tag on SDS-PAGE under reducing condition.

Human CD3E, hFc Tagged Protein ELISA

0.2 μ g of Human CD3E, hFc tagged protein per well

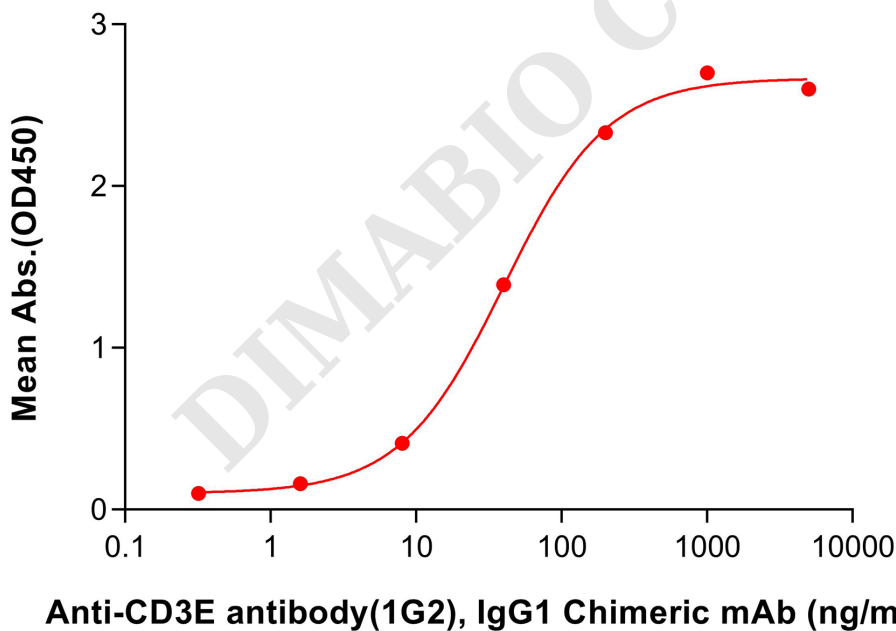


Figure 2. ELISA plate pre-coated by 2 μ g/mL (100 μ L/well) Human CD3E Protein, hFc Tag (PME100828) can bind Anti-CD3E antibody(1G2), IgG1 Chimeric mAb (DMC101085) in a linear range of 8.0-40 ng/mL.

